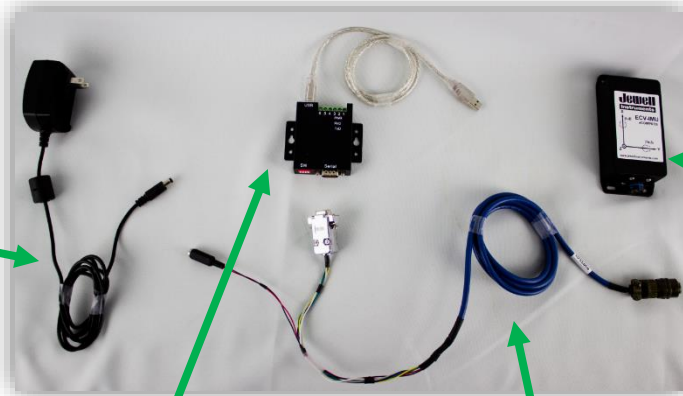


Installation (Model ECV-IMU-AC-RS485):

1) Parts needed:



110-240Vac to 12Vdc Transformer
Part Number 00254-02



Model ECV-IMU-AC-RS485
Part Number TBD



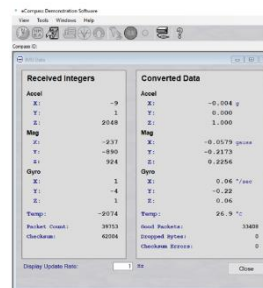
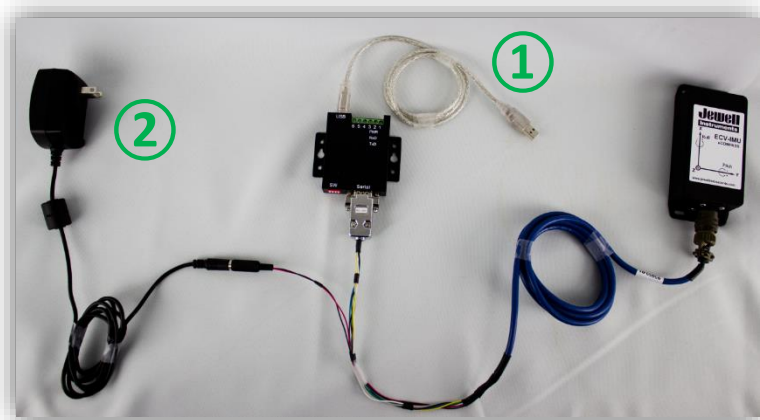
USB to RS232/RS485 Converter
Part Number F849284



RS485 to DB9 & Power Cable
Part Number 95059-01

2) Installation procedure:

- ① Connect to the USB port on the computer
- ② Transformer: 110-240Vac to 12Vdc
- ③ Open software and set baud rate to **57600**



Upon completion, the 'IMU Data' window should appear on the screen as shown here

Note: Max display update rate is 50Hz