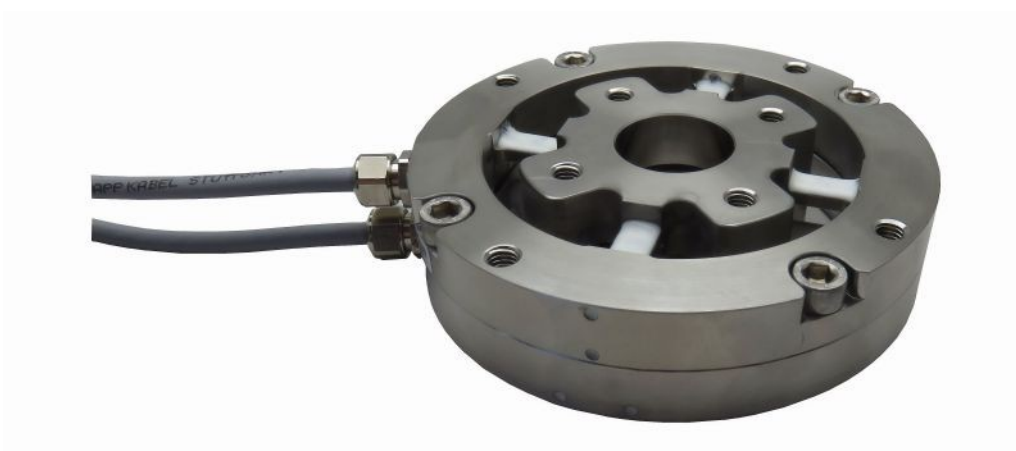


Force and torque measurement

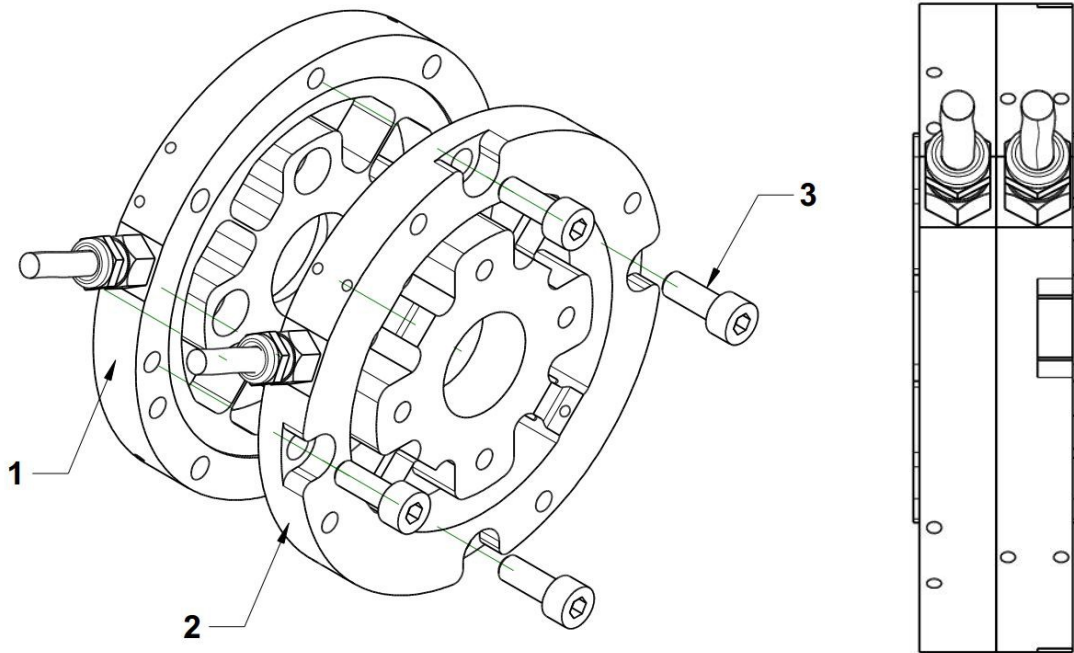
The force sensor KR110a is excellent suitable for the combination with the torque sensor TD110a or TS110a.

In this case force and torque are applied via an inner ring.



To guarantee the accuracy of measurement the following combination of the force sensor KR110a and of the torque sensor TD110a or TS110a is recommended.

| Sensor combination | | | TD110a 5 Nm AL | TD110a 10 Nm VA | TD110a 20 Nm VA | TD110a / TS110a 50 Nm VA | TS110a 100 Nm VA | TS110a 200 Nm VA |
|--------------------|--------|----|-------------------|--------------------|--------------------|--------------------------------|---------------------|---------------------|
| KR110a | 200 N | VA | X | | | | | |
| KR110a | 500 N | VA | | X | X | | | |
| KR110a | 1000 N | VA | | | X | X | | |
| KR110a | 2000 N | VA | | | | X | X | |
| KR110a | 5000 N | VA | | | | | | X |



| Position | Quantity | Description |
|----------|----------|-------------------------|
| 1 | 1 | TD110a / TS110a |
| 2 | 1 | KR110a |
| 3 | 4 | Screw ISO 4762 M6x16 A2 |