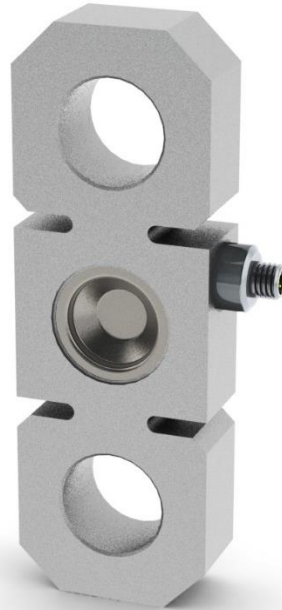


# Tension Load Link



## Product Description

Tension Load Link is a stainless steel load cell designed for static and dynamic load measurements. These load cells are often used in crane, hoist systems and shift lifting facilities. This type is offered with standard mV/V, current or voltage output (4 ... 20 mA / 0 ... 10 V) versions.

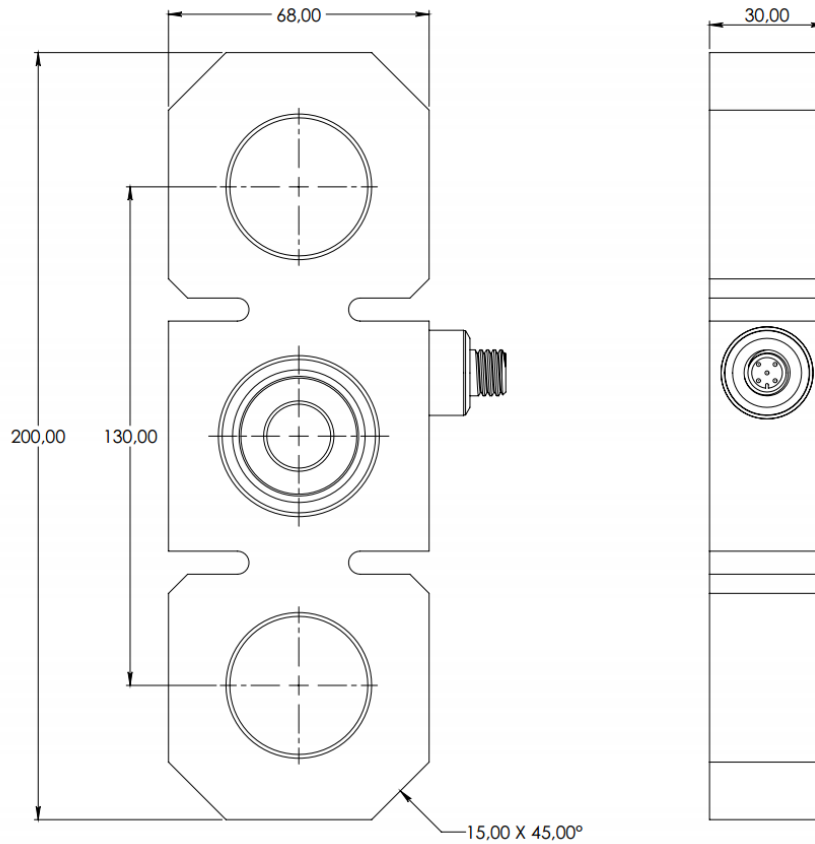
## Specification

Parameter	Range	Notes
Rated load	20kN & 30kN	
Proof load	150% of rated load	No effect on calibration
Ultimate load	300% of rated load	No structural failure (deformation only)
Deflection	<0.1 mm	
Output at rated load (RO)	1mV/ V	Nominal
	4-20mA	2 - wire
	0-10V	3 - wire
Current consumption	mA	Current output 4 ... 20 mA 2-wire: signal current Current output 4 ... 20 mA 3-wire: < 10 mA Voltage output: < 10 mA,
Supply voltage	VDC	13...28 for current output, 14...28 for voltage output,
Non-linearity	<= 0.5% RO	
Hysteresis	<= 0.5% RO	
Repeatability	<= 0.05% RO	
Output (span) temp coefficient	±0.02% RO / °C	
Offset (zero) temp coefficient	±0.02% RO / °C	
Compensated temp range	-15°C to +71°C	
Operating temp range	-40°C to +85°C	
Insulation resistance	=>5 Gohm @ 50 VDC	
Connector	M12	

# Tension Load Link

Protection class	IP67 – standard version (fully potted)	
Weight	2.5kg	
Material	15-5PH or 17-4PH stainless steel	

## Dimensions (in mm)



## Wiring Codes

Pin	mV/V	Current Output (2-wire)	Current Output (3-wire)	Voltage Output (3-wire)
1	Excitation (+)	Supply (+)	Supply (+)	Supply (+)
2	Excitation (-)	N/A	N/A	N/A
3	Signal (+)	Supply (-)/ Signal (-)	Supply (-)/ Signal (-)	Supply (-)/ Signal (-)
4	Signal (-)	N/A	Signal (+)	Signal (+)
5	N/A	N/A	N/A	N/A

M12 pin layout	
----------------	--