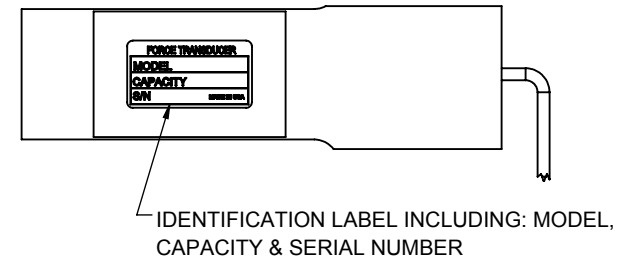
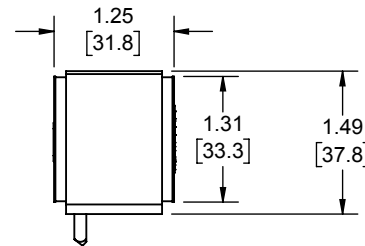
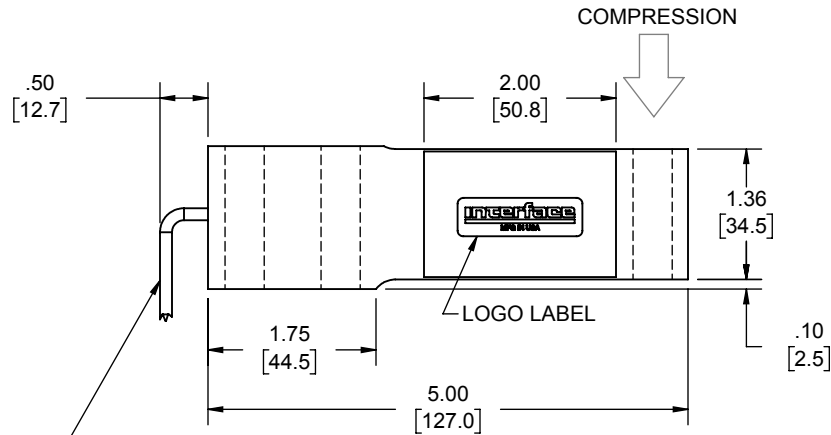
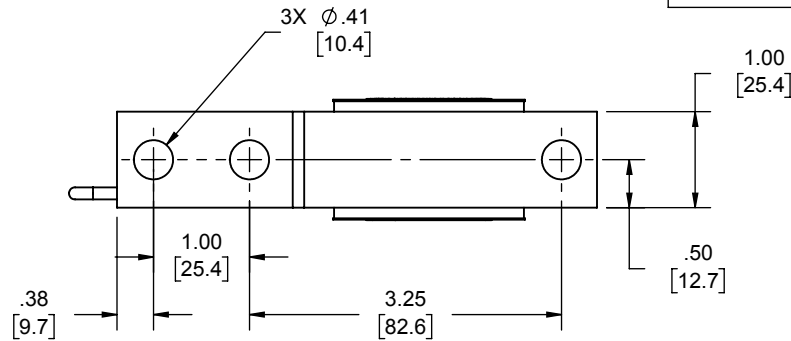


LOAD CELL CHARACTERISTICS	
CAPACITY	1000 (lbf)

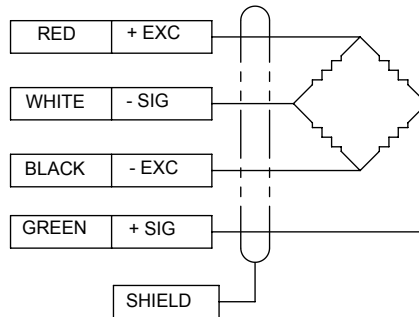
Interface Inc. claims proprietary rights in the information disclosed herein. This drawing is furnished in confidence on the express understanding that neither it nor any reproduction thereof will be disclosed to others or used for the purpose of manufacture or procurement of the article or part shown herein without written permission of Interface Inc. The drawing shall remain the property of Interface Inc. and shall be returned upon request by Interface Inc.

80025

REVISIONS			
REV.	DESCRIPTION	DATE	APPROVED
-	INITIAL RELEASE	12/22/95	
A	UPDATED TO CURRENT STANDARDS	12/12/2017	RMP



0.13 [3.3] O.D.
4 CONDUCTOR 28 GAGE
SHIELDED CABLE



COMPRESSION UPSCALE

- 3. COVER COLOR: BLUE
- 2. FLEXURE MATERIAL: ANODIZED ALUMINUM.
- 1. STANDARD CABLE LENGTH IS 10FT [3M].
NON-STANDARD LENGTH PER OPTION CODE.

UNLESS OTHERWISE SPECIFIED
DIMENSIONS ARE IN INCHES [mm]
TOLERANCES ARE:
ANGLES ± 0° 30'
.XX ± .01 [0.25]
.XXX ± .005 [0.13]

Interface
FORCE MEASUREMENT SOLUTIONS
7418 E. HELM DRIVE
SCOTTSDALE, AZ 85260 USA

CREATOR	DATE
DESIGNED:	
DETAILED: PER	12-22-95
WEIGHT: (APPROX)	0.3 (lbs)

TITLE: OUTLINE, MODEL: SSB-1000		SIZE: DWG. NO: 80025	REV: A
SCALE: 1:2	SHEET 1 OF 1		