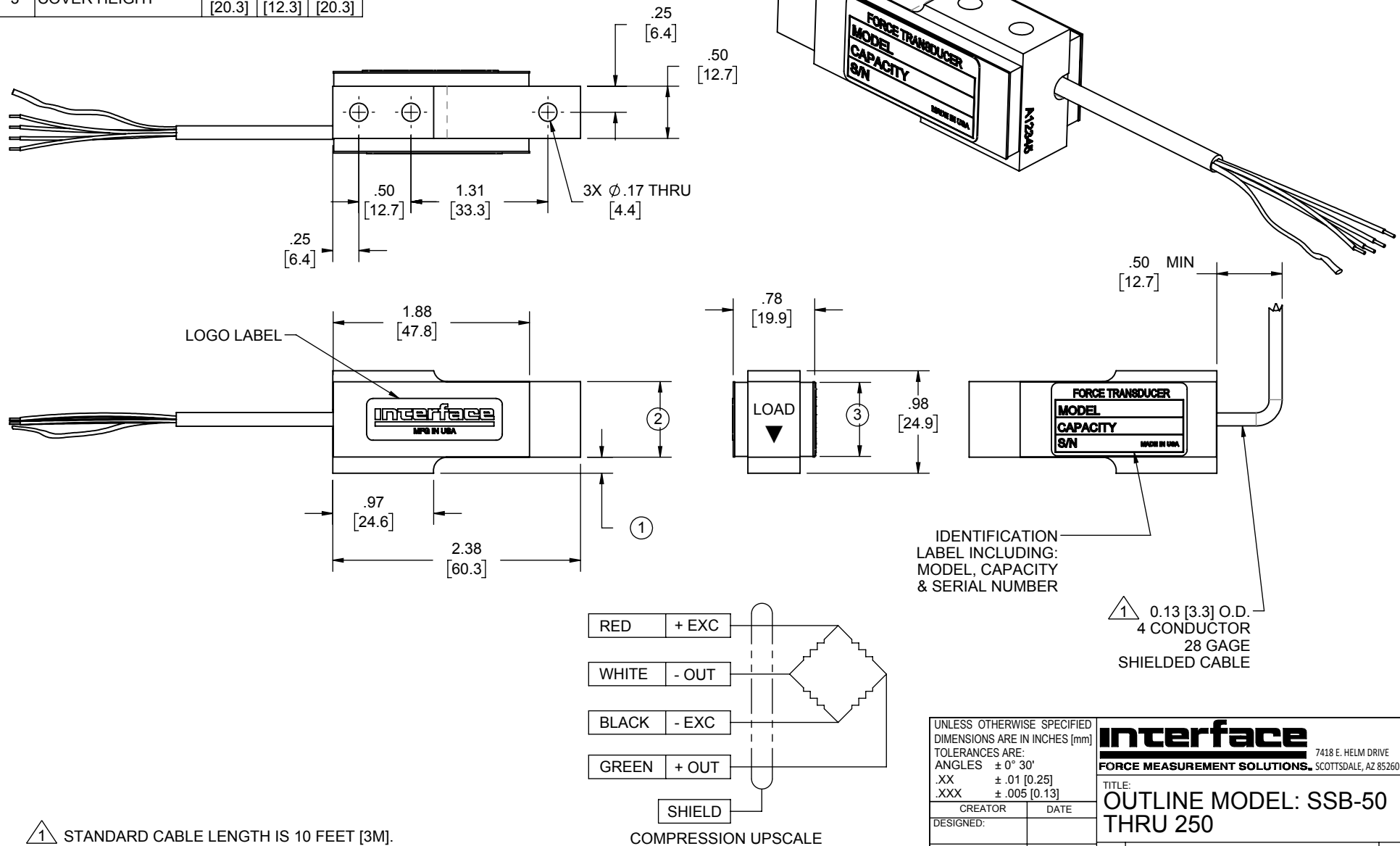


LOAD CELL CHARACTERISTICS				
#	CAPACITY (lbf)	50	100	250
1	MOUNT SURFACE TO FLEXURE BOTTOM	0.11 [2.7]	0.15 [3.9]	0.11 [2.7]
2	FLEXURE END HEIGHT	0.81 [20.6]	0.73 [18.4]	0.82 [20.8]
3	COVER HEIGHT	0.80 [20.3]	0.72 [12.3]	0.80 [20.3]

Interface Inc. claims proprietary rights in the information disclosed hereon. This drawing is furnished in confidence on the express understanding that neither it nor any reproduction thereof will be disclosed to others or used for the purpose of manufacture or procurement of the article or part shown hereon without written permission of Interface Inc. The drawing shall remain the property of Interface Inc. and shall be returned upon request by Interface Inc.

80023			
REVISIONS			
REV.	DESCRIPTION	DATE	APPROVED
-	INITIAL RELEASE	12/21/95	
A	UPDATED TO CURRENT STANDARDS	05/16/2018	RMP



UNLESS OTHERWISE SPECIFIED DIMENSIONS ARE IN INCHES [mm] TOLERANCES ARE: ANGLES ± 0° 30' .XX ± .01 [0.25] .XXX ± .005 [0.13]	
CREATOR	DATE
DESIGNED:	
DETAILED: PER	12/21/95
WEIGHT: (APPROX) 0.11 (lbs)	

Interface FORCE MEASUREMENT SOLUTIONS		7418 E. HELM DRIVE SCOTTSDALE, AZ 85260 USA
TITLE: OUTLINE MODEL: SSB-50 THRU 250		
SIZE: A	DWG. NO: 80023	REV: A
SCALE: 3:4	SHEET 1 OF 1	

CAD FILE <_Document Vault\1\80023.SLD***>