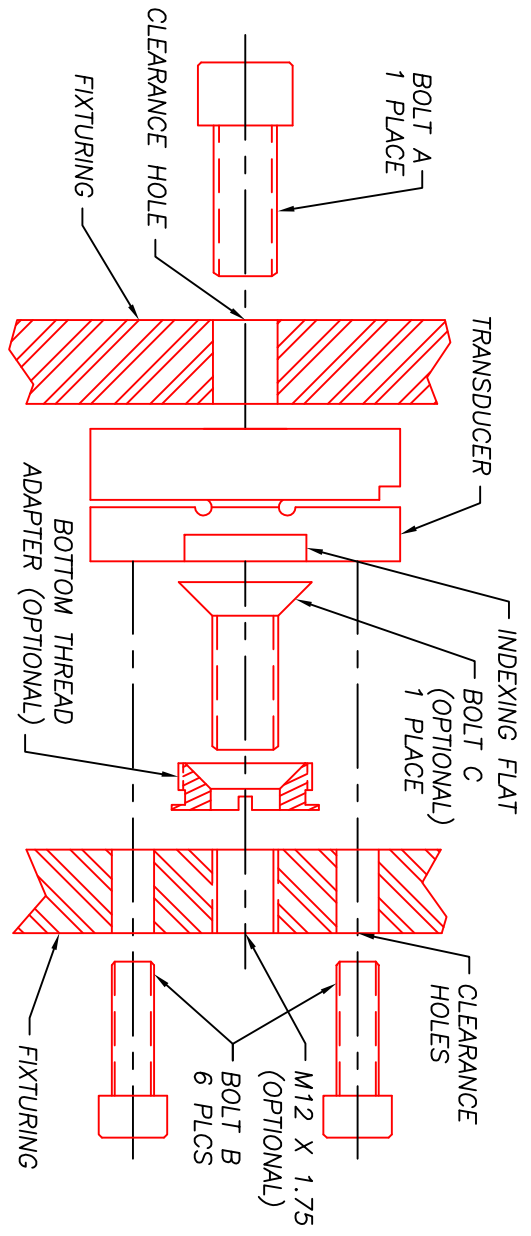


TR3D-A-* MOUNTING OPTIONS



MODEL	BOLT A	BOLT B	BOLT C	MAX. REC. PILOT DEPTH
*TR3D-A-1K	M12 X 1.75	M8 X 1.25	M12 X 1.75	0.040 in[1.02 mm]
*TR3D-A-3K	M12 X 1.75	M8 X 1.25	M12 X 1.75	0.040 in[1.02 mm]
*TR3D-A-5K	M12 X 1.75	M8 X 1.25 M10 X 1.5 SEE NOTE 3.	M12 X 1.75	0.040 in[1.02 mm]

- NOTES:
1. OPTIONAL BOTTOM THREAD ADAPTER ALLOWS TRANSDUCER TO BE MOUNTED FROM ONE SIDE WHEN ACCESS TO TIGHTEN BOLT B IS NOT AVAILABLE.
 2. BOTTOM THREAD ADAPTER IS NOT INCLUDED WITH STANDARD TRANSDUCER. CONTACT FACTORY FOR ORDERING INFORMATION.
 3. TRANSDUCER TR3D-A-5K USES BOTH M8X1.25(QTY=4) AND M10X1.5(QTY=2) BOLTS ON BASE.
 4. FIXTURING ATTACHED TO TOP OF TRANSDUCER MUST CONCENTRATE LOADING TO MATERIAL AROUND M12 THREADED HOLE. DO NOT TRANSFER LOADS THROUGH COVER ONLY.
 5. THE TWO INDEXING FLATS ON THE TRANSDUCER BASE CAN BE USED TO ORIENT THE TRANSDUCER AXES.

MICHIGAN PACIFIC CORPORATION
 08500 ANCE ROAD
 CHARLEVOIX, MI 49720
 PHONE: (231)547-5511 FAX: (231)547-7070

DESIGNED BY: MGS
 DRAWN BY: MGS
 CHECKED BY: RFG
 FINISH: RMS

DATE: 12/22/00
 TITLE: MOUNTING DRAWING
 SHT OF SHTS: 1
 SCALE: NTS

DRAWING NO.: MATERIAL:

DATE	BY	REVISION	LOC.
12/22/00	MGS	RELEASED	