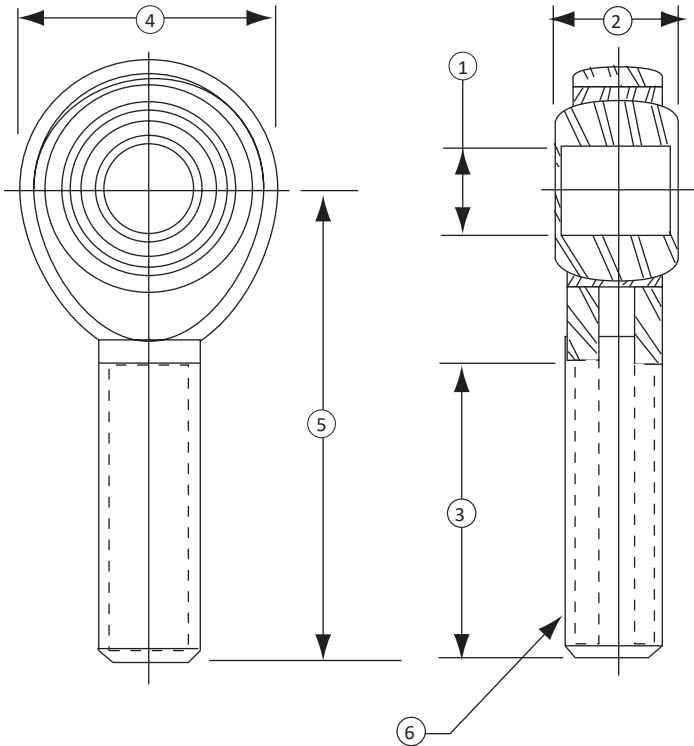


ROD END BEARINGS (U.S. & METRIC)

FEATURES & BENEFITS

- For tension applications
- Reduces alignment error
- Metric sizes available



STANDARD CONFIGURATION



Model REB-104 w/JN-101 & REB-102 w/JN-105 (Shown)

SPECIFICATIONS

MECHANICAL	
Material	Heat Treated Steel

DIMENSIONS

Model	Application	Jam Nut Included	1		2		3		4		5		6	
			in	mm	in	mm	in	mm	in	mm	in	mm	in	mm
REB-104	SM-10 - 250, SSM-50 - 250	JN-101	1/4	6.3500	3/8	9.5250	1	25.400	3/4	19.050	1 9/16	39.6875	1/4-28	
REB-106	SM-500, 1000, SSM-500, 1000 SSM-2000, & 3000	JN-102	1/2	12.700	5/8	15.875	1 1/2	38.1000	1 5/16	33.3375	2 7/16	61.9125	1/2-20	
REB-101	1110 & 1210-300 - 10K, SSM-5K	JN-103	5/8	15.875	3/4	19.050	1 5/8	41.2750	1 1/2	38.1000	2 5/8	66.6750	5/8-18	
REB-102	1120 & 1220-25K, 50K	JN-105	1	25.400	1 3/8	34.925	2 11/32	59.5313	2 3/4	69.8500	4 1/8	104.775	1 1/4-12	

NOTE: When connecting a ROD END BEARING directly to a LOAD CELL, use of the JAM NUT is recommended.

International System of Units (SI) dimensions and capacities are provided for conversion only. Standard products have U.S. capacities and dimensions. SI capacities available upon special request and at an additional cost.