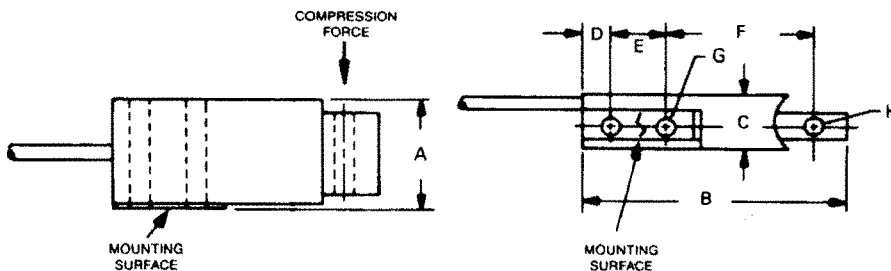


### INSTALLATION DIMENSIONS

MODEL,	A	B	C	D	E	F	G	H
MB-5,10, 25, 50	1	2 3/4	1/2	1/4	.500	1 1/4	1/4	1/4
75, 100, 150	25.4	60.3	12.7	6.4	12.7	33.3	4.4	4.4
	inch							
	mm							

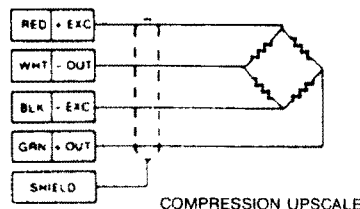


**Mounting instructions:** Fasten securely to flat rigid surface with two 8-32 X 1 1/4 screws. Torque to 24-inch pounds (2.7N·m) for best performance.

### ELECTRICAL INFORMATION

MB Series is provided with a 4-conductor shielded cable (AWG 28) 5 feet (1.5m) long.

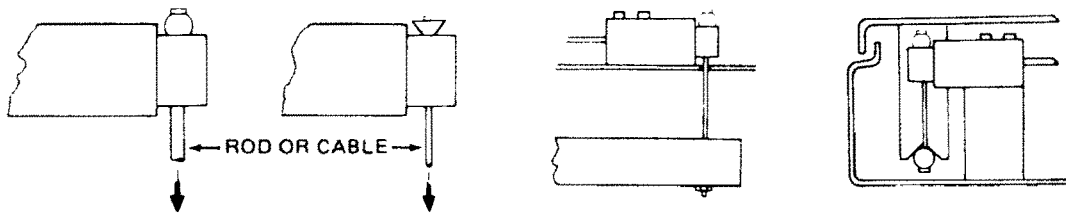
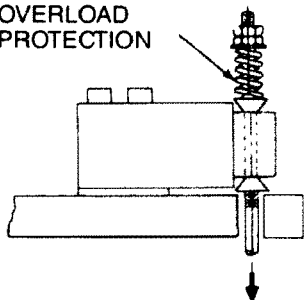
Wiring Color Code complies with ISA S37.8 "Specifications and Tests for Strain Gage Force Transducers" and SMA Load Cell Terminology.



### APPLICATION NOTES

1. The Minibeam load cells are designed for controlled environment applications. In general, they can be used anywhere a readout instrument is used.
2. NOTE: Please exercise caution during handling and installation of these load cells. The application of a force equaling more than 150% of the rated capacity (7.5 lbs. on MB-5; 15 lbs. on MB-10; 37.5 lbs. on MB-25, etc.) can result in irreparable damage.
3. These units are not intended for submerged operation. A Moisture Resistant coating is applied for capacities 25 thru 250 lbs. to protect MB Series from high humidity conditions up to and including 95% Relative Humidity and periodic exposure to condensation.

PRELOADED  
SPRING  
OVERLOAD  
PROTECTION



For spring overload details, request IFI #32.

TYPICAL INSTALLATION — ATTACHMENT METHODS

### PERFORMANCE DATA

Nominal Output—mV/V .....	3
Input Resistance—Ohms .....	350 +50/ -3.5
Output Resistance—Ohms .....	350 ±3.5
Recommended Excitation .....	10 VDC
Non-Linearity—% Full Scale .....	< ±0.03%
Hysteresis—% Full Scale .....	< ±0.02%
Compensated Temp. Range .....	0°F to 150°F
.....	(-15°C to 65°C)
Temperature effect on zero—% Rated Output/100°F	
(% Rated Output/55.6°C) .....	±0.15
Zero Balance—% Rated Output .....	< ±1

## MINIBEAM LOAD CELL

INTERFACE, INC.  
7401 E. Butherus Dr.  
Scottsdale, Arizona 85260 U.S.A.  
Telephone (480) 948-5555 • FAX (480) 948-1924  
[www.interfaceforce.com](http://www.interfaceforce.com)

WARRANTY & CERTIFICATION STATEMENT ON OTHER SIDE