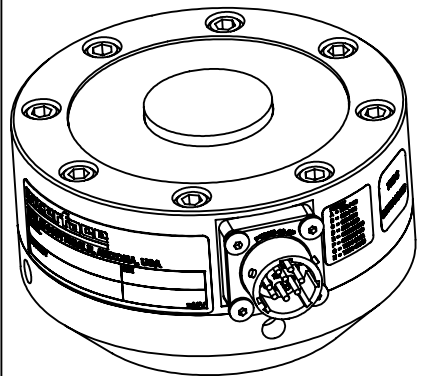
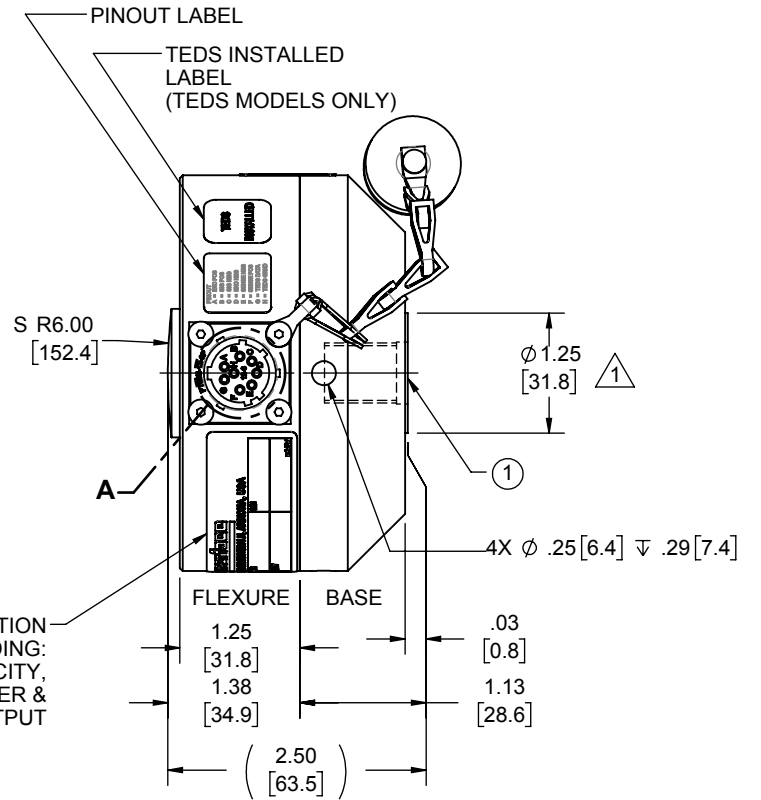
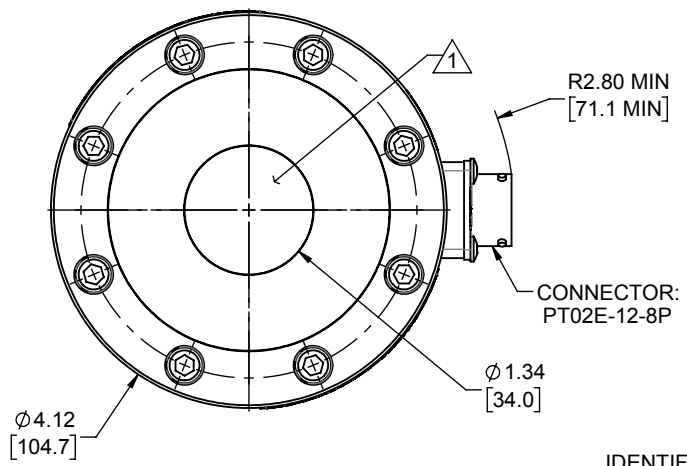
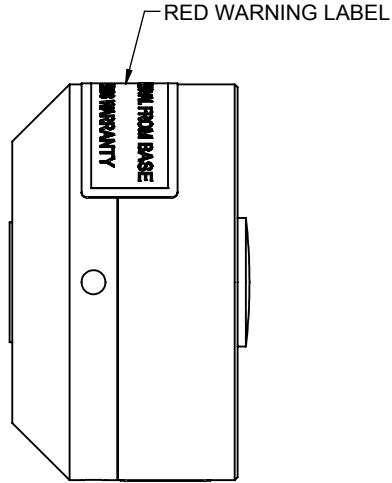


LOAD CELL CHARACTERISTICS

#	CAPACITY	US CAPACITIES	SI CAPACITIES
		1K, 2K, 5K & 10K (lbf)	4.5, 9, 22, 45 (kN)
1	BASE THREAD, DEPTH & COUNTERBORE	.625-18 UNF-3B ∇ 0.87 \sqcup ϕ .64 ∇ 0.12	M16 X 2-4H ∇ 22.1 \sqcup ϕ 16.5 ∇ 3.0

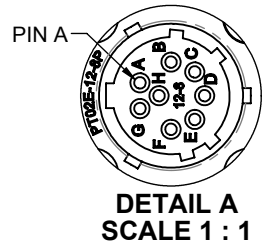
Interface Inc. claims proprietary rights in the information disclosed herein. This drawing is furnished in confidence on the express understanding that neither it nor any reproduction thereof will be disclosed to others or used for the purpose of manufacture or procurement of the article or part shown hereon without written permission of Interface Inc. The drawing shall remain the property of Interface Inc. and shall be returned upon request by Interface Inc.

REVISIONS			
REV.	DESCRIPTION	DATE	APPROVED
A	INITIAL RELEASE	06/24/98	
B	ADDED METRIC CAPACITIES	02/27/13	
C	ADDED TEDS IN PINOUT TABLE	09/30/2016	DLC



CONNECTOR PINOUT		
PIN	FUNCTION	FUNCTION W/ TEDS
A	+ EXCITATION	+ EXCITATION
B	+ SIGNAL	+ SIGNAL
C	- SIGNAL	- SIGNAL
D	- EXCITATION	- EXCITATION
E	- SENSE	- SENSE
F	+ SENSE	+ SENSE
G	RCAL	TEDS DATA
H	ID RESISTOR	TEDS GROUND

TENSION UPSCALE



2. MODELS WITH TEDS ID CHIP HAVE A "T" AT THE END OF THE MODEL NUMBER (1611AJH-10K-T).

1 NO PAINT.

UNLESS OTHERWISE SPECIFIED DIMENSIONS ARE IN INCHES [mm]
TOLERANCES ARE:
ANGLES $\pm 0^{\circ} 30'$
.XX $\pm .01$ [0.25]
.XXX $\pm .005$ [0.13]

CREATOR	DATE
DESIGNED:	
DETAILED: JEP	06/23/98
WEIGHT: (APPROX) 6.67 (lbs)	

interface
ADVANCED FORCE MEASUREMENT
7401 E. BUTHERUS DR. SCOTTSDALE, AZ USA 85260

TITLE:
**OUTLINE MODEL:
1611**

SIZE: DWG. NO: **80048**

SCALE: 1:2

SHEET 1 OF 1

REV: **C**