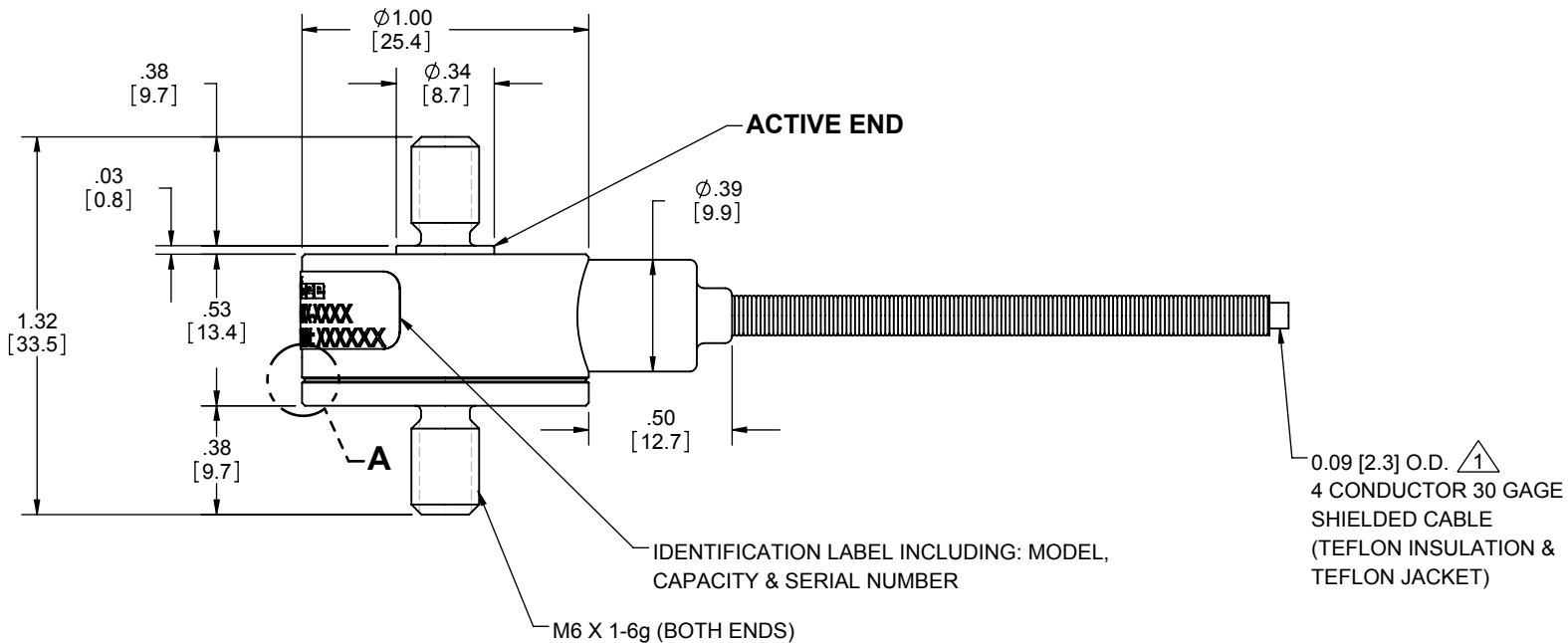


LOAD CELL CHARACTERISTICS	
CAPACITY	1100, 2200, 4500 (N)

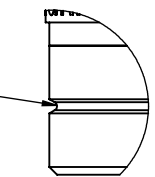
Interface Inc. claims proprietary rights in the information disclosed herein. This drawing is furnished in confidence on the express understanding that neither it nor any reproduction thereof will be disclosed to others or used for the purpose of manufacture or procurement of the article or part shown hereon without written permission of Interface Inc. The drawing shall remain the property of Interface Inc. and shall be returned upon request by Interface Inc.

<b>81091</b>			
REVISIONS			
REV.	DESCRIPTION	DATE	APPROVED
A	INITIAL RELEASE	10/12/11	
B	ADDED "SHIELD" TO WIRE DIAGRAM	07/02/12	Me
C	UPDATED TO CURRENT STANDARDS	12/21/2016	BB

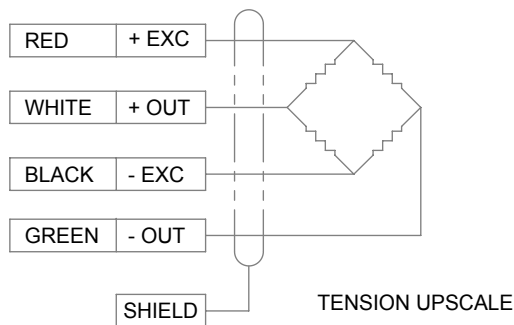
**TENSION LOAD**



IDENTIFICATION GROOVE FOR MODELS WITH METRIC THREADS



**DETAIL A**  
SCALE 4 : 1



△ STANDARD CABLE LENGTH IS 5 FEET ( 1.5 M ).  
NON-STANDARD CABLE LENGTH PER OPTION CODE.

UNLESS OTHERWISE SPECIFIED DIMENSIONS ARE IN INCHES [mm]	
TOLERANCES ARE:	
ANGLES	± 0° 30'
.XX	± .01 [0.25]
.XXX	± .005 [0.13]
CREATOR	DATE
DESIGNED: KEN V.	07/21/11
DETAILED: AL	07/21/11
WEIGHT: (APPROX) 0.1 (lbs)	

<b>interface</b>	
ADVANCED FORCE MEASUREMENT 7401 E. BUTHERUS DR. SCOTTSDALE, AZ USA 85260	
TITLE: <b>OUTLINE: WMC-1100N, -2200N, -4500N</b>	
SIZE: DWG. NO: <b>A 81091</b>	REV: <b>C</b>
SCALE: 1.5:1	SHEET 1 OF 1