

LOAD CELL CHARACTERISTICS

#	CAPACITY (N)	900, 1300	2200, 4500
	FLEXURE MATERIAL	ANODIZED ALUMINUM	STAINLESS STEEL

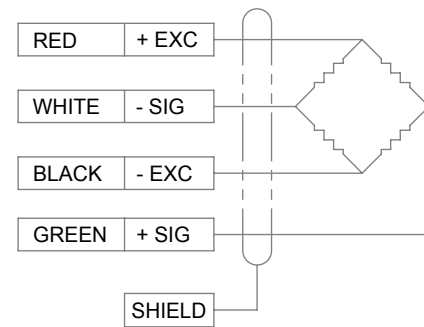
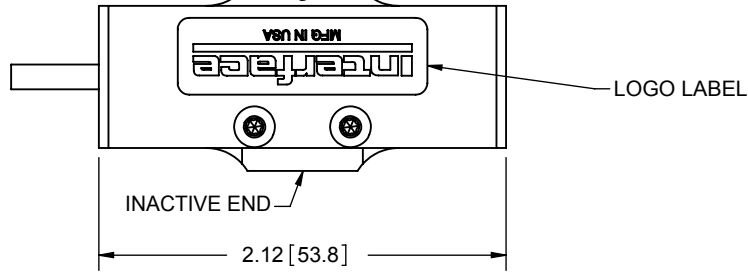
Interface Inc. claims proprietary rights in the information disclosed herein. This drawing is furnished in confidence on the express understanding that neither it nor any reproduction thereof will be disclosed to others or used for the purpose of manufacture or procurement of the article or part shown hereon without written permission of Interface Inc. The drawing shall remain the property of Interface Inc. and shall be returned upon request by Interface Inc.

81074

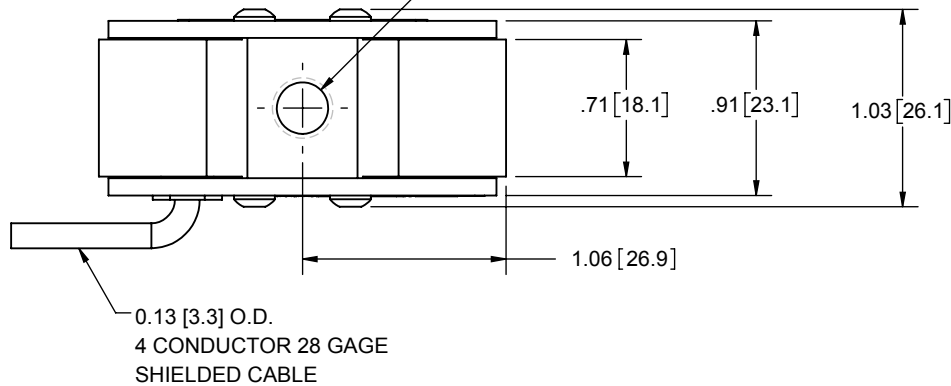
REVISIONS

REV.	DESCRIPTION	DATE	APPROVED
A	INITIAL RELEASE	05/12/11	
B	UPDATED TO CURRENT STANDARDS	08/03/2018	RMP

IDENTIFYING MARK FOR METRIC THREAD ACTIVE END

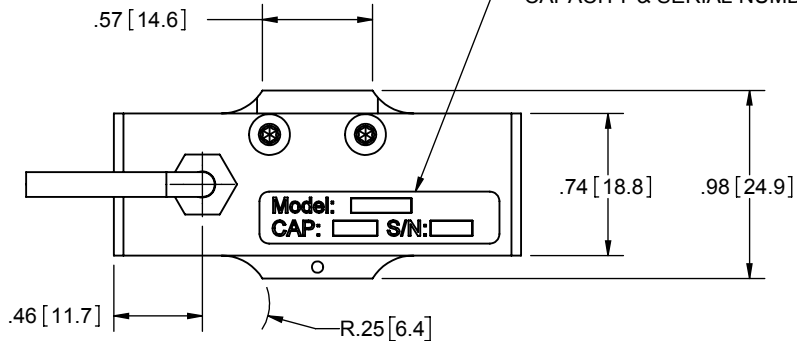


M8X1.25 - 6H ∇ .32 [8.1] MIN DEPTH BOTH ENDS



TENSION UPSCALE

IDENTIFICATION LABEL INCLUDING: MODEL, CAPACITY & SERIAL NUMBER



- STANDARD CABLE LENGTH IS 5 FT (1.5 m)
NON-STANDARD CABLE LENGTH PER OPTION CODE.

UNLESS OTHERWISE SPECIFIED DIMENSIONS ARE IN INCHES [mm]
TOLERANCES ARE:
ANGLES $\pm 0^\circ 30'$
.XX $\pm .01$ [0.25]
.XXX $\pm .005$ [0.13]

CREATOR	DATE
DESIGNED: LAVAR C.	05/12/2011
DETAILED: AL	5/12/2011
WEIGHT: (APPROX) 56.5 (lbs)	

Interface 7418 E. HELM DRIVE
FORCE MEASUREMENT SOLUTIONS, SCOTTSDALE, AZ 85260 USA

TITLE:
OUTLINE, MODEL: SML-900N, -1300N, -2200N, -4500N

SIZE: A	DWG. NO: 81074	REV: B
SCALE: 1:1	SHEET 1 OF 1	