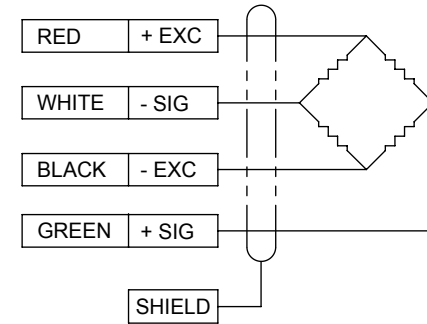
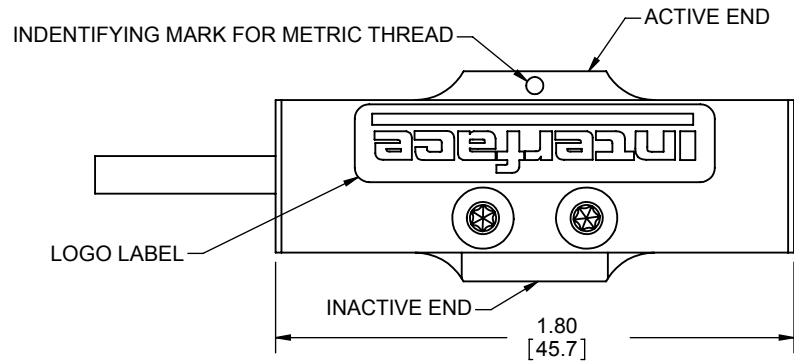


LOAD CELL CHARACTERISTICS	
CAPACITY	22, 45 (N)
FLEXURE MATERIAL	ANODIZED ALUMINUM

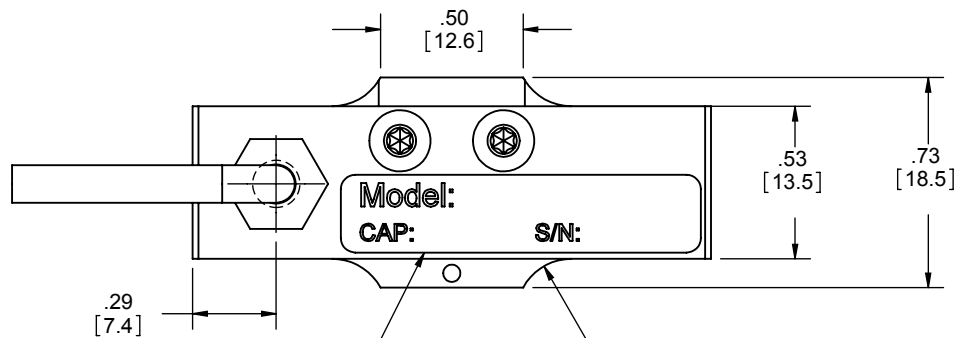
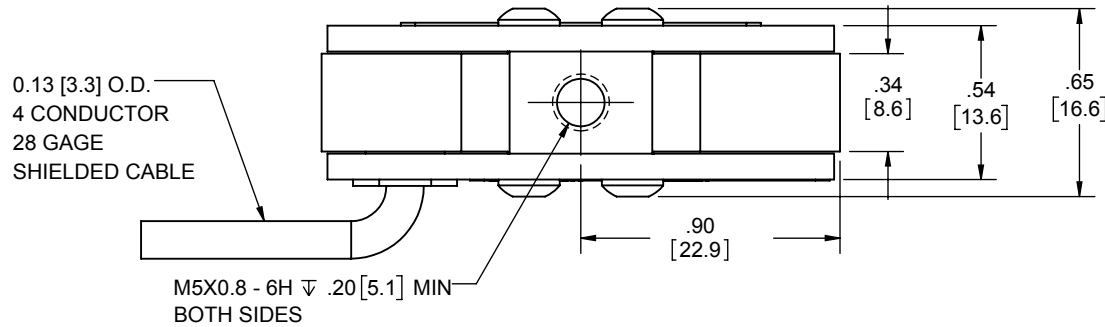
Interface Inc. claims proprietary rights in the information disclosed herein. This drawing is furnished in confidence on the express understanding that neither it nor any reproduction thereof will be disclosed to others or used for the purpose of manufacture or procurement of the article or part shown herein without written permission of Interface Inc. The drawing shall remain the property of Interface Inc. and shall be returned upon request by Interface Inc.

81073

REVISIONS			
REV.	DESCRIPTION	DATE	APPROVED
A	INITIAL RELEASE	05/12/11	
B	UPDATED TO CURRENT STD'S, UPDATED LABEL'S	02/14/2018	JR



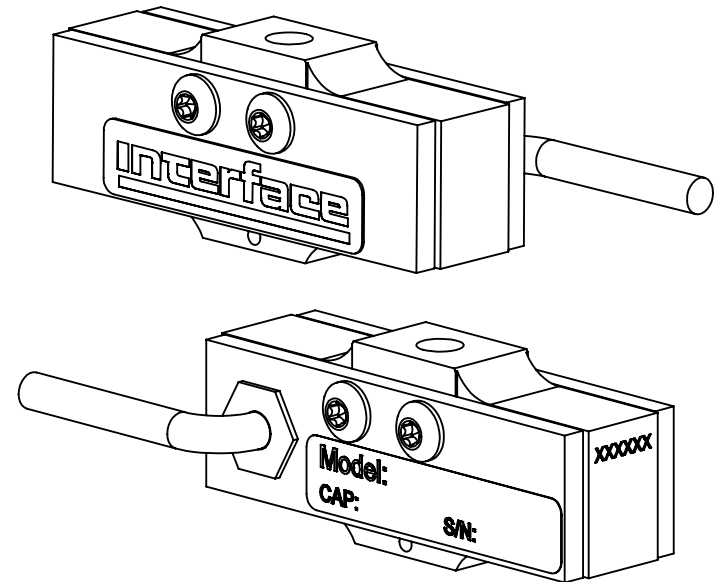
TENSION UPSCALE



IDENTIFICATION LABEL INCLUDING:
MODEL, CAPACITY & SERIAL NUMBER



STANDARD CABLE LENGTH IS 5 FT (1.5 m)
NON-STANDARD CABLE LENGTH PER OPTION CODE.



UNLESS OTHERWISE SPECIFIED
DIMENSIONS ARE IN INCHES [mm]
TOLERANCES ARE:
ANGLES $\pm 0^{\circ} 30'$
.XX $\pm .01$ [0.25]
.XXX $\pm .005$ [0.13]

CREATOR	DATE
DESIGNED: LAVAR C.	05/12/2011
DETAILED: AL	5/12/2011
WEIGHT: (APPROX) 0.05 (lbs)	

Interface 7418 E. HELM DRIVE
FORCE MEASUREMENT SOLUTIONS, SCOTTSDALE, AZ 85260 USA

TITLE:
**OUTLINE MODEL:
SML-22N, -45N**

SIZE: A	DWG. NO: 81073	REV: B
SCALE: 3:2	SHEET 1 OF 1	