

## FEATURES & BENEFITS

- Capacities from 0.5 to 5,000 kN (112 to 1.12K lbf)
- IP67 environmental protection
- Stainless steel construction

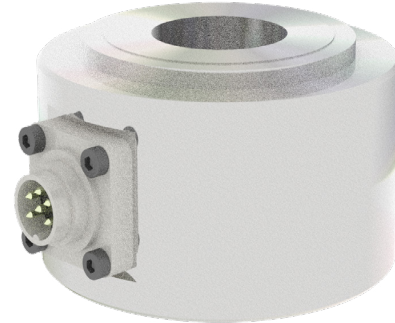
## SPECIFICATIONS

ACCURACY – (MAX ERROR)		
Nonlinearity – %FS		±0.5
Hysteresis – %FS		±0.5
Non-repeatability – %RO		±0.1
Creep, in 30 min – %		±0.1
TEMPERATURE		
Effect on Zero – %RO / °C		±0.01
Effect on Output – %RO / °C		±0.01
Compensated Range	°C	-10 to +70
	°F	+14 to +158
Operating Range	°C	-30 to +80
	°F	-22 to +176
ELECTRICAL		
Output – mV/V		1 ± 20%
Excitation Voltage – VDC		2 - 12
Bridge Resistance – Ohm		350
Electrical Connection – Cable – m		3
MECHANICAL		
Safe Overload – %RO		150
Deflection at Rated Capacity – mm		< 0.1
IP Rating		IP67
Material		Stainless steel

## OPTIONS

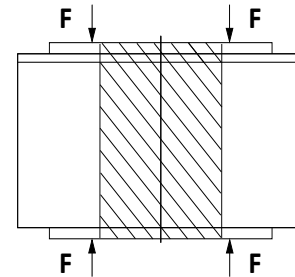
- Special temperature range
- Internal shunt resistor – 100% output
- Standardized output
- Add connector to cable
- Custom calibration
- Transducer Electronic Data Sheet (TEDS)
- Cable length
- 100% control signal (internal shunt cal)

## STANDARD CONFIGURATION



Model LWHP18

## LOADING DIAGRAM

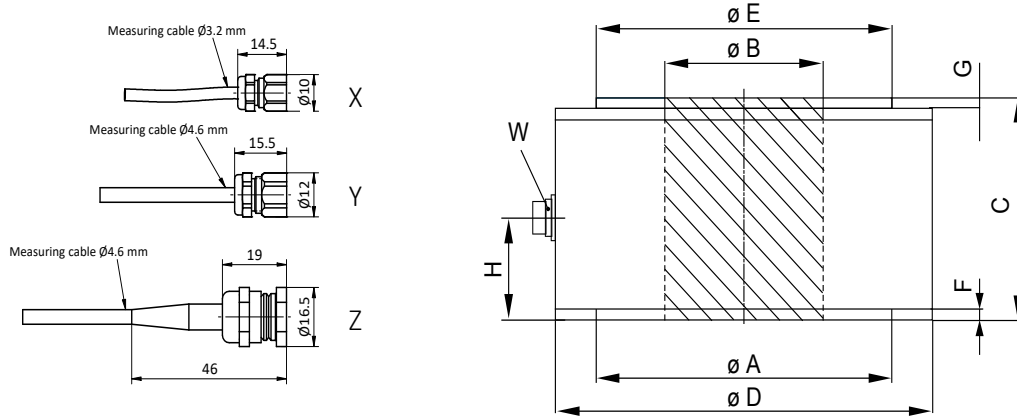


## CONNECTOR OPTIONS

- 3 m (10 ft) integral cable
- Series 723 binder (500 to 5000 kN or 112K to 1124K lbf)

## ACCESSORIES

- Instrumentation



**DIMENSIONS**

See Drawing	CAPACITY											
	Metric (kN)	U.S. (lbf)	Metric (kN)	U.S. (lbf)	Metric (kN)	U.S. (lbf)	Metric (kN)	U.S. (lbf)	Metric (kN)	U.S. (lbf)	Metric (kN)	U.S. (lbf)
	mm	in	mm	in	mm	in	mm	in	mm	in	mm	in
A	10	0.4	14	0.6	22	0.9	28	1.1	35	1.4	47.5	1.9
B	5	0.2	8	0.3	15	0.6	15	0.6	20	0.8	25	1.0
C	30	1.2	30	1.2	30	1.2	30	1.2	40	1.6	40	1.6
D	30	1.2	30	1.2	40	1.6	40	1.6	55	2.2	64	2.5
E	10	0.4	14	0.6	22	0.9	28	1.1	35	1.4	48	1.9
F	2	0.1	2	0.1	2	0.1	2	0.1	2	0.1	2.5	0.1
G	2	0.1	2	0.1	2	0.1	2	0.1	2	0.1	2.5	0.1
H	15	0.6	15	0.6	15	0.6	15	0.6	20	0.8	20	0.8
W	-	-	-	-	-	-	-	-	-	-	-	-
X	X	X	-	-	-	-	-	-	-	-	-	-
Y	-	-	X	X	X	X	X	X	-	-	-	-
Z	-	-	-	-	-	-	-	-	X	X	X	X

See Drawing	CAPACITY									
	Metric (kN)	U.S. (lbf)	Metric (kN)	U.S. (lbf)	Metric (kN)	U.S. (lbf)	Metric (kN)	U.S. (lbf)	Metric (kN)	U.S. (lbf)
	mm	in	mm	in	mm	in	mm	in	mm	in
A	500	112K	1000	225K	2000	450K	3000	674K	5000	1124K
B	60	2.4	88	3.5	105.6	4.2	125	4.9	220	8.7
C	30	1.2	68	2.8	68	2.8	68	2.8	100	3.9
D	50	2.0	100	3.9	100	3.9	100	3.9	120	4.7
E	80	3.1	129	5.1	160	6.3	160	6.3	270	10.6
F	60	2.4	88	3.5	106	4.2	124.6	4.9	220	8.7
G	4	0.2	4	0.2	5	0.2	5	0.2	5	0.2
H	3	0.1	5	0.2	5	0.2	5	0.2	5	0.2
W	26	1.0	46.5	1.8	46	1.8	47	1.9	60	2.4
X	X	X	X	X	X	X	X	X	X	X
Y	-	-	-	-	-	-	-	-	-	-
Z	-	-	-	-	-	-	-	-	-	-

LWHP18v2.105-02-2018