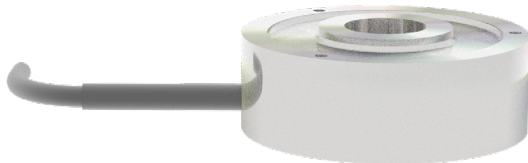


## FEATURES & BENEFITS

- Capacities from 0.05 to 100 kN (11.2 to 22.5 lbf)
- Ideal for applications requiring a thru-hole

## STANDARD CONFIGURATION



Model LWHP14 (Shown)

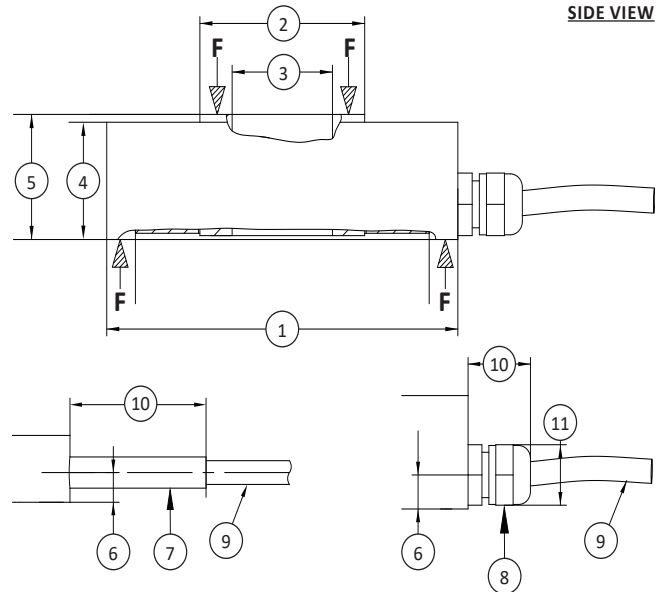
## SPECIFICATIONS

ACCURACY - (MAX ERROR)		
Nonlinearity – %FS		±0.5
Hysteresis – %FS		±0.5
Non-repeatability – %RO		±0.2
Creep, in 30 min – %		±0.1
TEMPERATURE		
Effect on Zero – %RO / °C		±0.02
Effect on Output – %RO / °C		±0.02
Compensated Range	°C	0 to +60
	°F	+32 to +140
Operating Range	°C	-10 to +70
	°F	+14 to +158
ELECTRICAL		
Output – mV/V ± %		1 ± 20
Excitation Voltage – VDC		2 - 12
Bridge Resistance – Ohm		350
MECHANICAL		
Safe Overload – %RO		150
Deflection at Rated Capacity	mm	< 0.15
	in	< 0.006
IP Rating		IP60
Material		Stainless steel

## OPTIONS

- Cable length
- Standardized output
- Add connector to cable
- Custom calibration
- Special temperature range
- 100% control signal (internal shunt calibration)
- Transducer Electronic Data Sheet (TEDS)

SIDE VIEW



Notes:  
\* F indicates load direction

## DIMENSIONS

See Drawing	CAPACITY							
	Metric (kN)	US (lbf)	Metric (kN)	US (lbf)	Metric (kN)	US (lbf)	Metric (kN)	US (lbf)
	0.05, 0.1, 0.2, 0.5	11.4, 22.5, 45, 112	1, 2, 5, 10	225, 450, 1.12K, 2.25K	20, 50	4.45K, 11.2K	100	22.5K
	mm	in	mm	in	mm	in	mm	in
1	∅ 30	∅ 1.2	∅ 38	∅ 1.5	∅ 49	∅ 1.9	∅ 78	∅ 3.1
2	∅ 9.0	∅ 0.35	∅ 13.5	∅ 0.53	∅ 23	∅ 0.9	∅ 42	∅ 1.7
3	∅ 5.2	∅ 0.20	∅ 7	∅ 0.3	∅ 14	∅ 0.6	∅ 27	∅ 1.1
4	8	0.3	9	0.4	15	0.6	24	0.9
5	9.5	0.37	10	0.4	16	0.6	25	1.0
6	4.5	0.18	4.0	0.16	4.5	0.18	7.5	0.30
7	X	X	X	X				
8					X	X	X	X
9	∅ 3.2	0.13	∅ 3.2	∅ 0.13	∅ 3.2	∅ 0.13	∅ 3.2	∅ 0.13
10	10	0.4	10	0.4	10	0.4	10	0.4
11	∅ 10	∅ 0.4	∅ 10	∅ 0.4	∅ 10	∅ 0.4	∅ 10	∅ 0.4

## CONNECTOR OPTIONS

- 3 m (9.8 ft) integral cable

## ACCESSORIES

- Instrumentation