

LOAD CELL CHARACTERISTICS

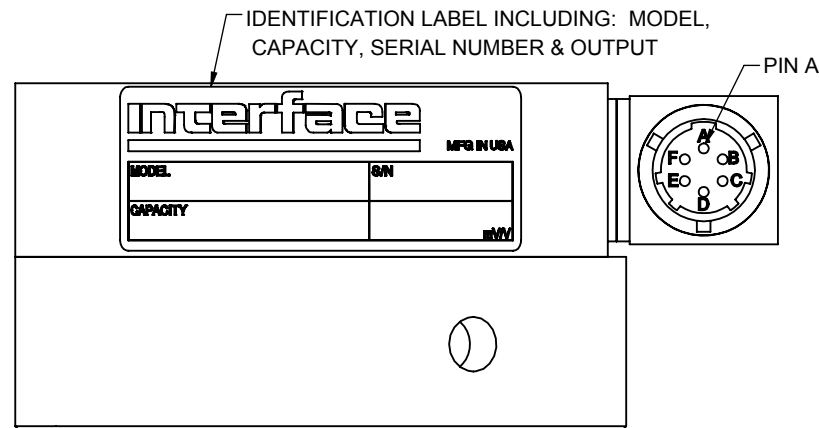
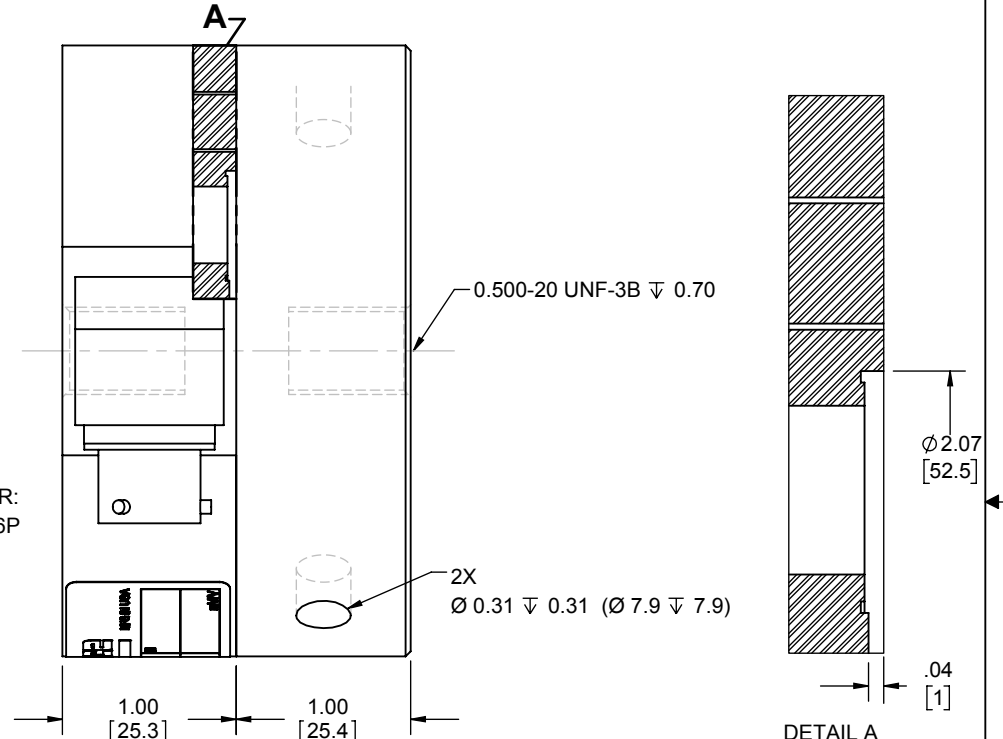
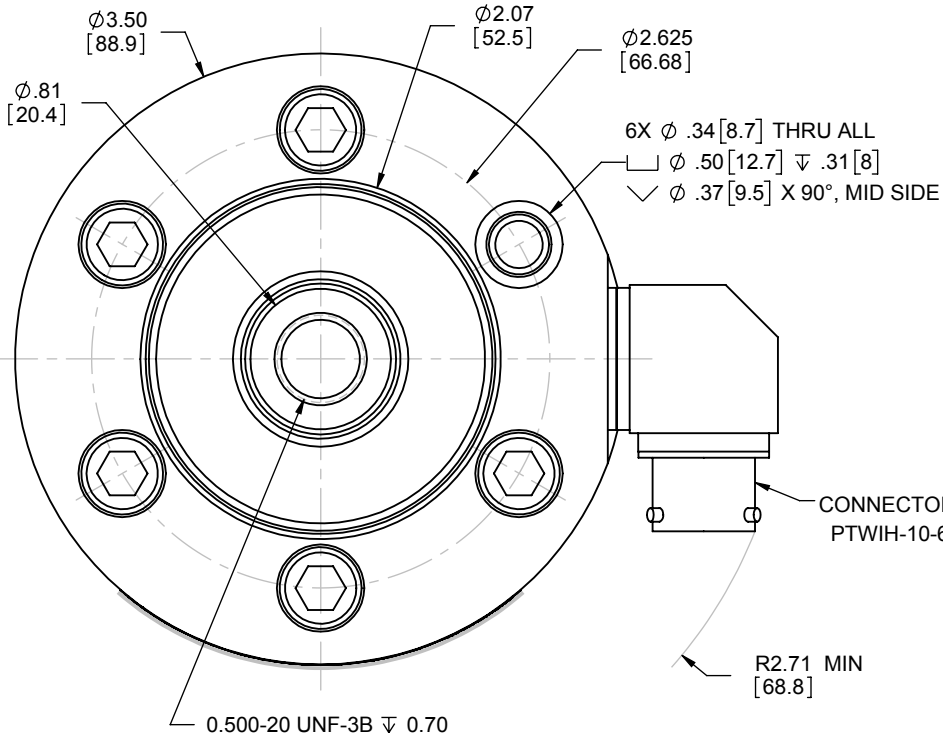
CAPACITY 500, 1K, 2K, 3K, 4K, 5K (lbf)

Interface Inc. claims proprietary rights in the information disclosed herein. This drawing is furnished in confidence on the express understanding that neither it nor any reproduction thereof will be disclosed to others or used for the purpose of manufacture or procurement of the article or part shown hereon without written permission of Interface Inc. The drawing shall remain the property of Interface Inc. and shall be returned upon request by Interface Inc.

80261

REVISIONS

REV.	DESCRIPTION	DATE	APPROVED
B	C'BORE DEPTH 0.314 WAS 0.405	04/26/99	
C	ADDED 500 & 1K CAPACITIES	01/24/11	
D	ADDED PINOUT WITH TEDS	02/01/16	LCG
E	UPDATED TO CURRENT STANDARDS	08/15/2018	CS



FLEXURE BASE

3. BASE IS OPTIONAL. MODEL NUMBERS ENDING IN (-B) HAVE A BASE INSTALLED.
2. DIMENSIONAL TOLERANCE: ± 0.01 (± 0.3).
1. DIMENSIONS IN INCHES (mm).

PIN	FUNCTION
A	+ EXC + EXC
B	+ SENSE + SIGNAL
C	- EXC - SIGNAL
D	- SENSE - EXC
E	- SIGNAL TEDS DATA
F	+ SIGNAL TEDS GND

TENSION UPSCALE

UNLESS OTHERWISE SPECIFIED
DIMENSIONS ARE IN INCHES (mm)
TOLERANCES ARE:
ANGLES $\pm 0^\circ 30'$
.XX $\pm .01$ [0.25]
.XXX $\pm .005$ [0.13]

CREATOR DATE
DESIGNED: JOE G. 03/29/1999
DETAILED: JEP 3/29/1999
WEIGHT: (APPROX) 4.8 (lbs)

Interface 7418 E. HELM DRIVE
FORCE MEASUREMENT SOLUTIONS, SCOTTSDALE, AZ 85260 USA

TITLE: **OUTLINE 2430**

SIZE: A DWG. NO: **80261** REV: **E**

SCALE: 1:1 SHEET 1 OF 1