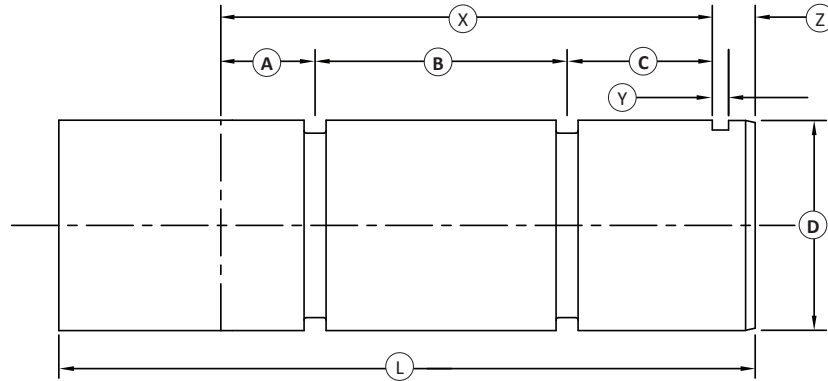


LP LOAD PIN (U.S. & METRIC)

LOAD PIN CONFIGURATOR



SECTION ONE PHYSICAL DIMENSIONS

Required Dimensions:				Computed Dimensions:					
	in	mm		in	mm	X	Y	Z	L
A:			C:						
B:			D:			<i>*estimated - final dimensions may vary</i>			

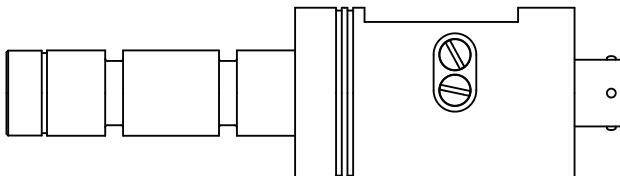
SECTION TWO FEATURES & APPLICATION

Application:		
1. Static Force / Load		4. Tractor Draw Bar Pull
2. Dynamic Force / Load		5. Mooring Linkage
3. Hoisting Load		6. Fork Lift Loading
		7. Conveyor Loading
		8. Line Tensiometer
		9. Other

Capacity:	Output Signal:	ATEX Required:
tonne	mV/V	No
K lbf	4-20mA	ATEX"D"
kN	0-10V	ATEX"N"
	RS485	ATEX"I"

EN 60529 Protection Level:	Cable Length:
IP65	
IP66	
IP67	
IP68	
IP69K	

MOUNTING CONFIGURATION



Various mounting configurations are available.

Shown: Typical mounting with anti-rotational slot near the end; connector output at housing base.