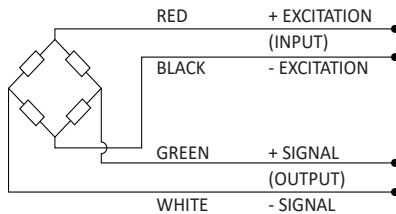


GWMC SERIES IN LINE LOAD CELL 200N - 5000N (METRIC)

Miniature Threaded In Line Load Cells are strain gauge based transducers with temperature compensation and excellent overall performance. This type measures tensile and compressive loads up to 5000N with better than $\pm 0.25\%$ non-linearity.

WIRING DIAGRAM

The sensor is provided with a #32 AWG 4-conductor braided shielded cable with an outer jacket of 2.2 mm diameter, 2m long, with no connection between the shield and the sensor body. For additional protection, the cable is contained within a stainless steel spring for strain relief purposes for the first 25 mm.



STANDARD CONFIGURATION



Model GWMC-200N-N-3 (Shown)

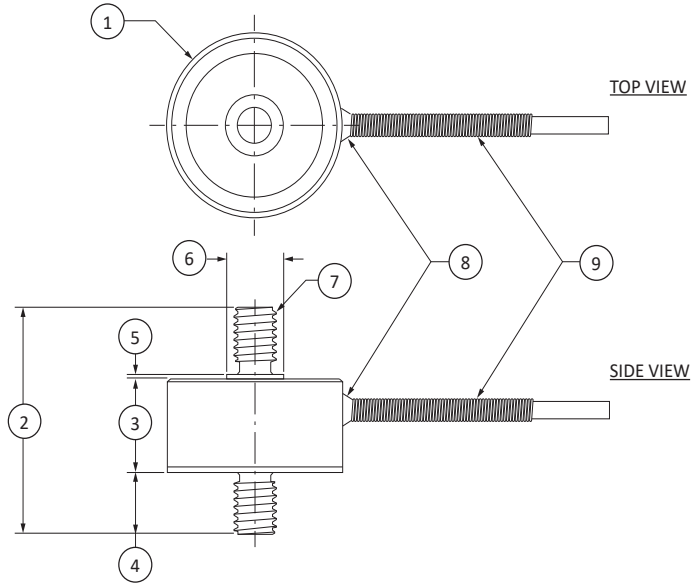
SPECIFICATIONS

PARAMETER	RANGE	NOTES
Capacity	200N, 500N, 1000N, 2000N & 5000N	With metric threads as standard
Rated Output (RO)	2mV/V nominal	
Allowable maximum load	150% full scale	No effect on performance
Non-linearity	$\pm 0.25\%$ of RO MAX	
Hysteresis	$\pm 0.25\%$ of RO MAX	
Repeatability	$\pm 0.1\%$ of RO MAX	
Zero balance	5% of RO MAX	
Zero temp coefficient	0.018% FS / °C	
Span temp coefficient	0.036% FS / °C	
Compensated temperature range	-15 °C TO 70 °C	Wider range available to order
Operating temperature range	-20 °C TO 80 °C	Wider range available to order
IP Rating	IP64	
Bridge resistance	700 ohm nominal	
Excitation	5v Recommended, 10v Max	

* All dimensions are in mm.

** This product is not available in the United States.

GWMC SERIES IN LINE LOAD CELL 200N - 5000N (METRIC)



DIMENSIONS

(1)	(2)	(3)	(4)	(5)	(6)	(7)	(8)	(9)
∅25.00	30.75	12.70	8.40	0.50	∅8.13	M6x1-6g x 2	Epoxy Fillet	Strain Relief Spring

* All dimensions are in mm.

** This product is not available in the United States.

+ Output (Tension)
- Output (Compression)



Capacity	Deflection Nominal	Thread
200N	0.05 [.002]	M6x1-6g
500N	0.05 [.002]	M6x1-6g
1000N	0.05 [.002]	M6x1-6g
2000N	0.05 [.002]	M6x1-6g
5000N	0.05 [.002]	M6x1-6g

/M/C Series In Line Load Cell 200N - 5000N v1.0 07-13-2020

GWMC SERIES IN LINE LOAD CELL 10kN - 50kN (METRIC)

The GWMC Miniature Threaded In Line Load Cells are strain gauge based transducers with temperature compensation and excellent overall performance. This type measures tensile and compressive loads up to 50kN with better than $\pm 0.5\%$ non-linearity.

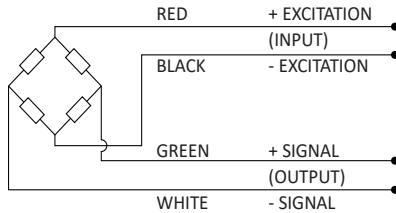
STANDARD CONFIGURATION



Model GWMC-50KN-N-3 (Shown)

WIRING DIAGRAM

- This sensor is provided with 4x28 AWG wiring within a braided shielded cable (overall cable length 2m)
- 6-wire cable is available to order



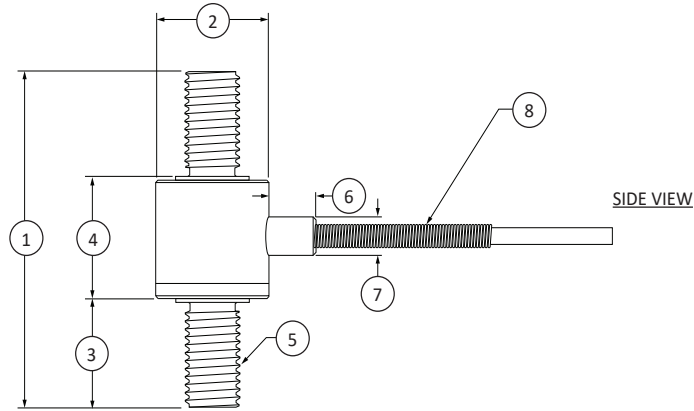
SPECIFICATIONS

PARAMETER	RANGE	NOTES
Capacity	10kN, 20kN & 50kN	With metric threads as standard
Rated Output (RO)	2mV/V nominal	
Allowable maximum load	150% full scale	No effect on performance
Non-linearity	$\pm 0.5\%$ of RO MAX	
Hysteresis	$\pm 0.5\%$ of RO MAX	
Repeatability	$\pm 0.1\%$ of RO MAX	
Zero balance	5% of RO MAX	
Zero temp coefficient	0.02% FS / °C	
Span temp coefficient	0.02% FS / °C	
Compensated temperature range	-15 °C TO 70 °C	Wider range available to order
Operating temperature range	-20 °C TO 80 °C	Wider range available to order
IP Rating	IP64	
Bridge resistance	350 ohm nominal	
Excitation	5v Recommended, 10v Max	

* All dimensions are in mm.

** This product is not available in the United States.

GWMC SERIES IN LINE LOAD CELL 10kN - 50kN (METRIC)



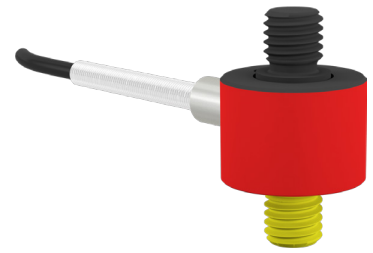
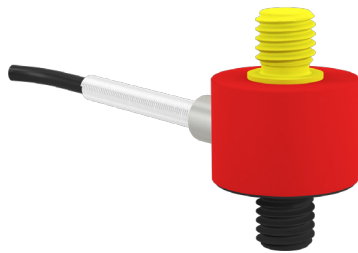
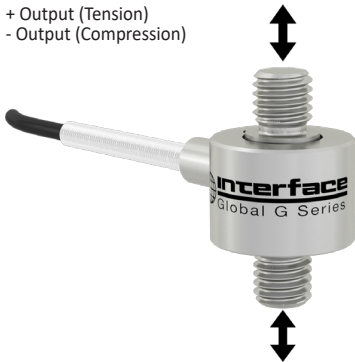
DIMENSIONS

Capacity	(1)	(2)	(3)	(4)	(5)	(6)	(7)	(8)
10kN	38.10	∅24.80	10.65	17.55	M10x1.5-6g x 2	10.40	∅8.00	Strain Relief Spring
20kN	70.40	∅24.80	22.85	25.45	M12x1.75-6g x 2	10.40	∅8.00	Strain Relief Spring
50kN	70.40	∅28.30	22.10	26.20	M16x2.0-6g x 2	10.40	∅8.00	Strain Relief Spring

* All dimensions are in mm.

** This product is not available in the United States.

+ Output (Tension)
- Output (Compression)



Red	Non loading surface
Yellow	Active End
Black	Fixed End