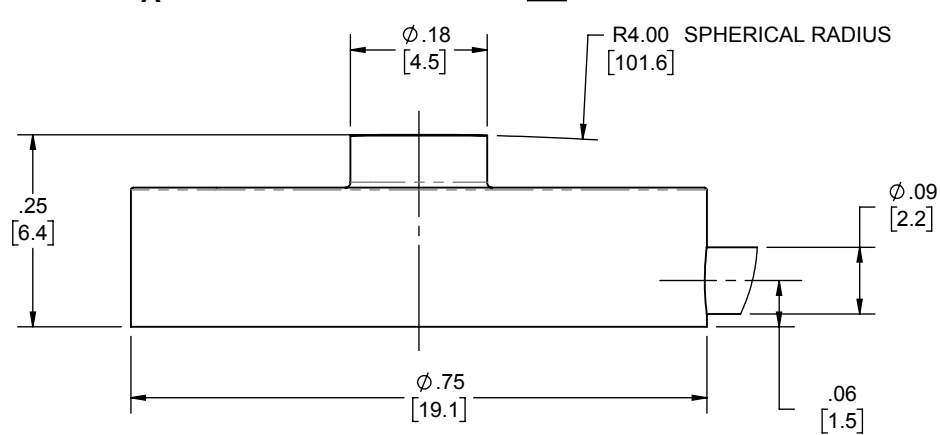
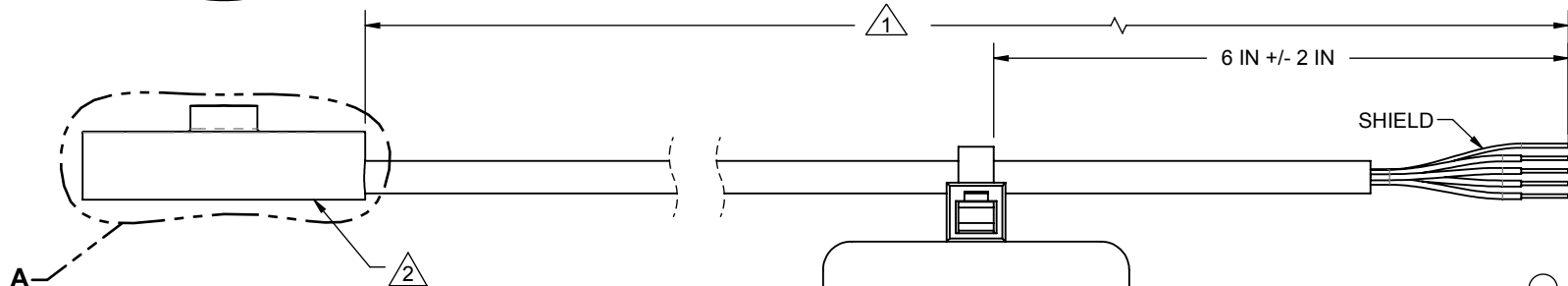
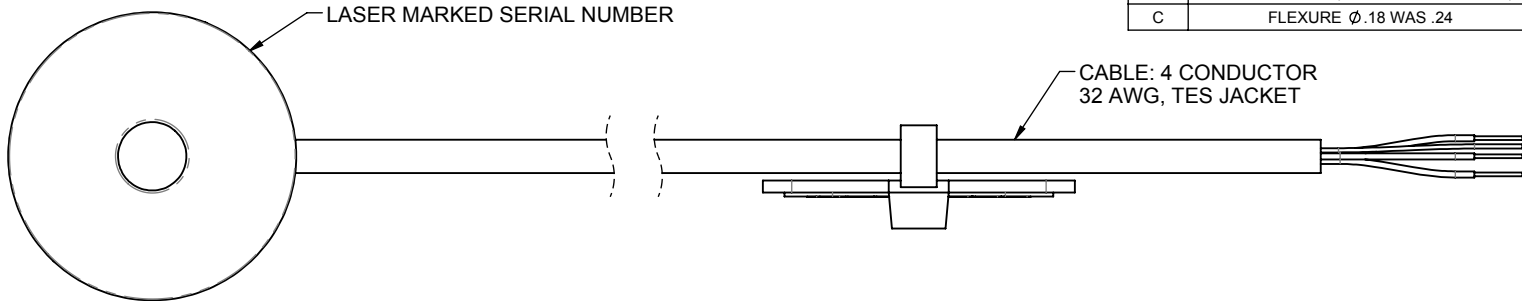


LOAD CELL CHARACTERISTICS	
CAPACITY	500, 1000 (lbf)

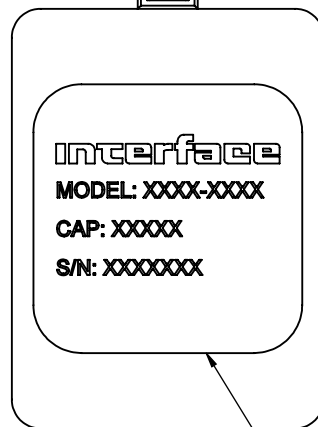
Interface Inc. claims proprietary rights in the information disclosed herein. This drawing is furnished in confidence on the express understanding that neither it nor any reproduction thereof will be disclosed to others or used for the purpose of manufacture or procurement of the article or part shown hereon without written permission of Interface Inc. The drawing shall remain the property of Interface Inc. and shall be returned upon request by Interface Inc.

82975

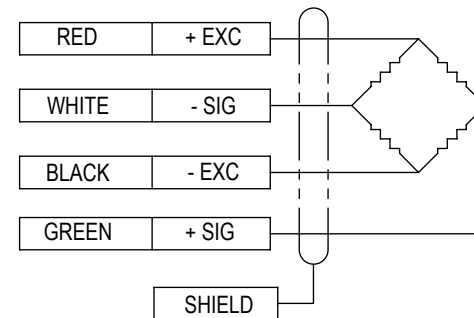
REVISIONS			
REV.	DESCRIPTION	DATE	APPROVED
A	INITIAL RELEASE	5/6/2020	JAMES R.
B	ADDED 6 IN DIM (CABLE TIE LOCATION)	6/4/2020	RMP
C	FLEXURE $\phi$ .18 WAS .24	9/02/2020	JR



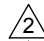

**DETAIL A  
SCALE 4 : 1**

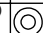


IDENTIFICATION LABEL INCLUDING: MODEL, CAPACITY & SERIAL NUMBER



COMPRESSION UPSCALE

-  FLEXURE MATERIAL: STAINLESS STEEL.
-  STANDARD CABLE LENGTH IS 5 FT [1.5M], NON-STANDARD CABLE LENGTH PER OPTION CODE.

UNLESS OTHERWISE SPECIFIED DIMENSIONS ARE IN INCHES [mm]	
TOLERANCES ARE:	
ANGLES	$\pm 0^{\circ} 30'$
.XX	$\pm .01$ [0.25]
.XXX	$\pm .005$ [0.13]
CREATOR	DATE
DESIGNED: JAMES R.	05/01/20
DETAILED: DAVID C.	05/01/20
WEIGHT: (APPROX) 0.02 (lbs)	

**Interface** 7418 E. HELM DRIVE  
**FORCE MEASUREMENT SOLUTIONS**, SCOTTSDALE, AZ 85260 USA

TITLE:  
**OUTLINE MODEL:  
 LBSU -500 THRU -1000**

SIZE: A	DWG. NO: 82975	REV: C
SCALE: 2:1	SHEET 1 OF 1	