

PC02E-10-8P

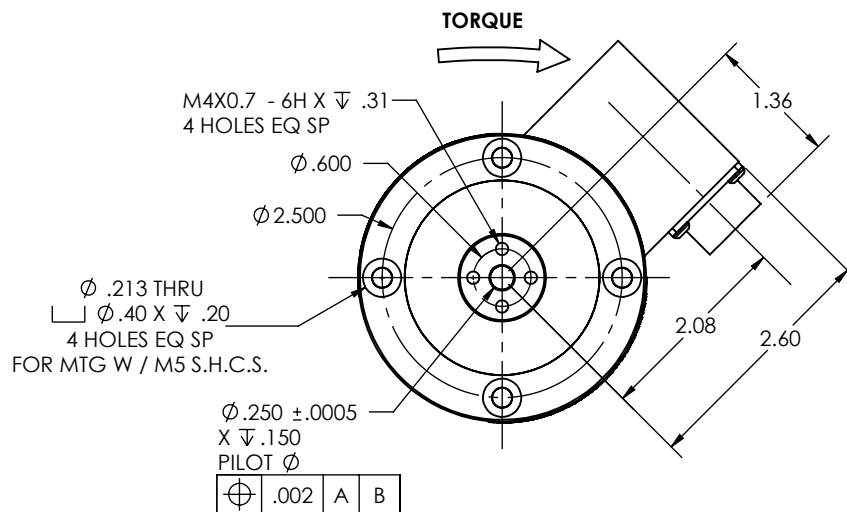
CONNECTOR PINOUT	
PIN	FUNCTION
BRIDGE "A" (AXIAL)	
A	+ EXCITATION
B	+ OUTPUT
C	- OUTPUT
D	- EXCITATION
BRIDGE "B" (TORSION)	
E	+ EXCITATION
F	+ OUTPUT
G	- OUTPUT
H	- EXCITATION
BRIDGE "A" TENSION UPSCALE	
BRIDGE "B" CLOCKWISE UPSCALE	

Interface Inc. claims proprietary rights in the information disclosed hereon. This drawing is furnished in confidence on the express understanding that neither it nor any reproduction thereof will be disclosed to others or used for the purpose of manufacture or procurement of the article or part shown hereon without written permission of Interface Inc. The drawing shall remain the property of Interface Inc. and shall be returned upon request by Interface Inc.

80714

REVISIONS

REV.	DESCRIPTION	DATE	APPROVED
A	INITIAL RELEASE	04/30/08	
B	UPDATED DOGHOUSE, ADDED DATA AND PINOUT LABELS	02/23/16	LCG

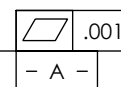
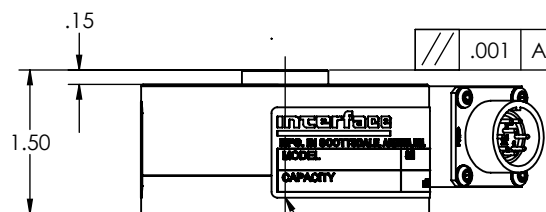
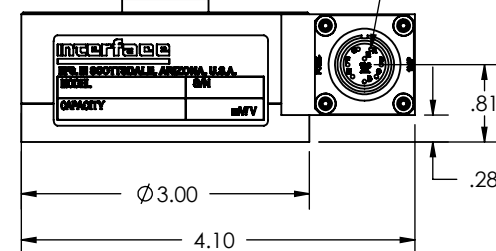


TENSION
FORCE



ϕ .90

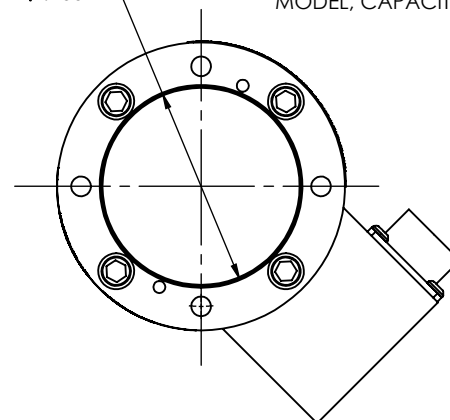
PIN A



IDENTIFICATION LABEL INCLUDING
MODEL, CAPACITY, & SERIAL NUMBER

ϕ 2.082 \pm .001
 ∇ .100

- B -



1. PAINT INTERFACE BLUE.

UNLESS OTHERWISE SPECIFIED DIMENSIONS ARE IN INCHES [mm] TOLERANCES ARE: ANGLES \pm 0° 30' .XX \pm .01 [0.25] .XXX \pm .005 [0.13]	
CREATOR	DATE
DESIGNED: LARRY B.	09/04/07
DETAILED: J.A.S.	09/04/07
WEIGHT: (APPROX) 0.81 (lbs)	

interface ADVANCED FORCE MEASUREMENT 7401 E. BUTHURUS DR. SCOTTSDALE, AZ USA 85260	
TITLE: OUTLINE, MODEL 1516-100	
SIZE: DWG. NO: A 80714	REV: B
SCALE: 1:2	SHEET 1 OF 1

CAD FILE <N:\-180714B.SLD***>