

LOAD CELL CHARACTERISTICS

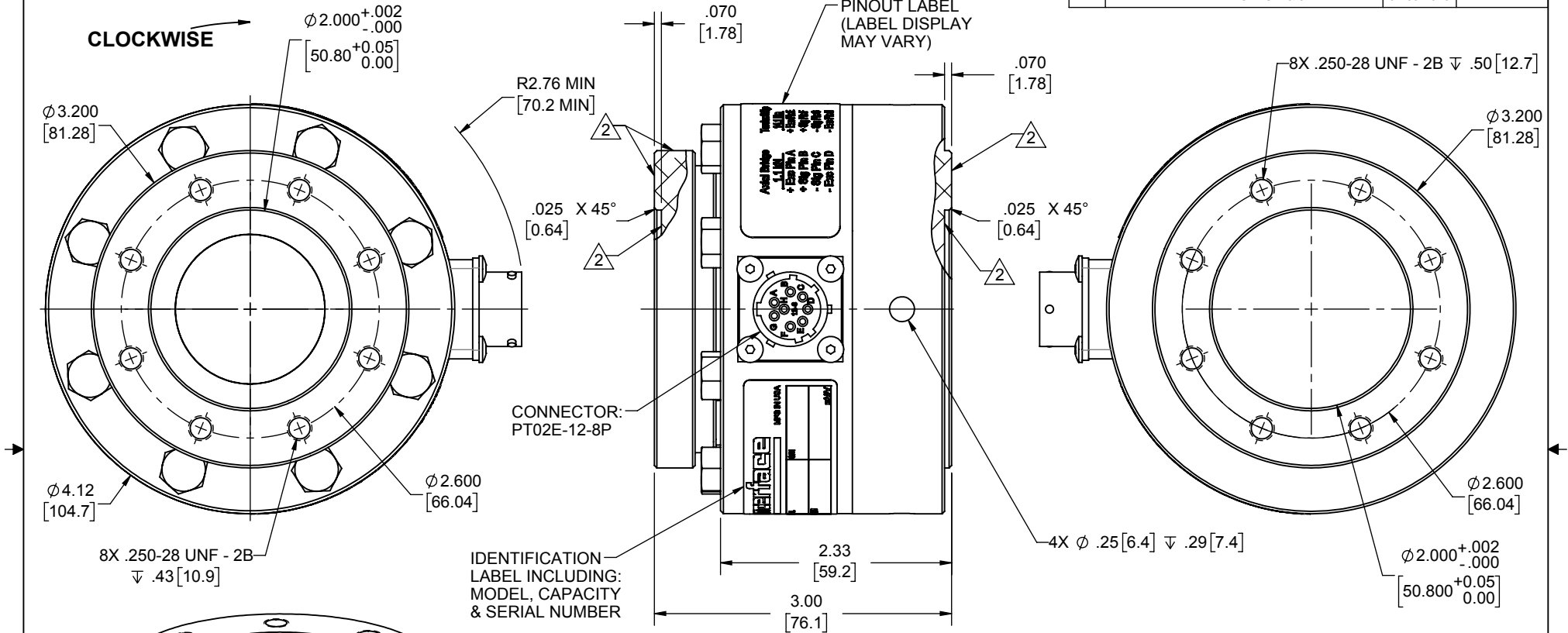
CAPACITY 250 / 125, 500 / 250, 1K / 500, 2K / 1000, 3K / 1000 (lb) / (inch-lb)

Interface Inc. claims proprietary rights in the information disclosed herein. This drawing is furnished in confidence on the express understanding that neither it nor any reproduction thereof will be disclosed to others or used for the purpose of manufacture or procurement of the article or part shown hereon without written permission of Interface Inc. The drawing shall remain the property of Interface Inc. and shall be returned upon request by Interface Inc.

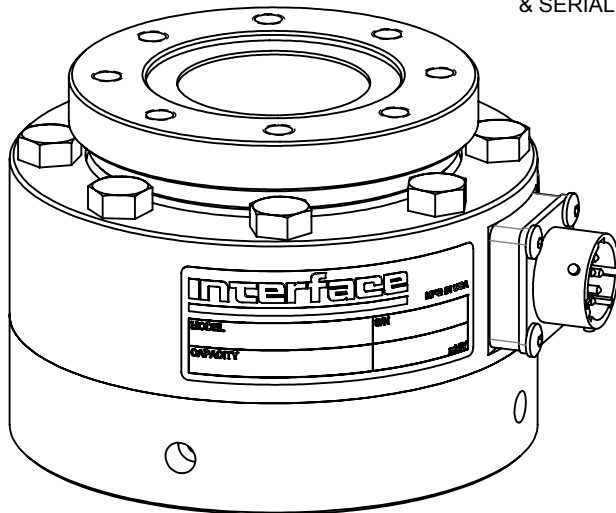
80362

REVISIONS

REV.	DESCRIPTION	DATE	APPROVED
B	EXTENDED LEADED LINE TO FLANGE, #4	12/01/06	
C	REDRAWN, UPDATED TO CURRENT FORMAT	06/02/16	DLC
D	ADDED NOTES 2 & 3	01/09/2019	ALBERT L.



- 3. LOAD CELL MUST BE MOUNTED ON SURFACE FLAT WITHIN 0.0002 INCH WITH EIGHT .250-28 SHCS TORQUED TO 60 lb-IN.
- 2. NO PAINT.
- 1. PAINT: BLACK



CONNECTOR PINOUT	
PIN	FUNCTION
BRIDGE "A" AXIAL	
A	+ EXCITATION
B	+ SIGNAL
C	- SIGNAL
D	- EXCITATION
BRIDGE "B" TORSION	
E	+ EXCITATION
F	+ SIGNAL
G	- SIGNAL
H	- EXCITATION

"A" TENSION UPSCALE
"B" CLOCKWISE UPSCALE

UNLESS OTHERWISE SPECIFIED
DIMENSIONS ARE IN INCHES [mm]
TOLERANCES ARE:
ANGLES $\pm 0^\circ 30'$
.XX $\pm .01$ [0.25]
.XXX $\pm .005$ [0.13]

CREATOR: JEP
DESIGNED: JEP
DATE: 11/2/2001
WEIGHT: (APPROX) 3.17 (lbs)

Interface 7418 E. HELM DRIVE
FORCE MEASUREMENT SOLUTIONS, SCOTTSDALE, AZ 85260 USA

TITLE:
**OUTLINE MODEL:
1216 AXIAL-TORSION**

SIZE: DWG. NO: **80362** REV: **D**
SCALE: 2:3 SHEET 1 OF 1