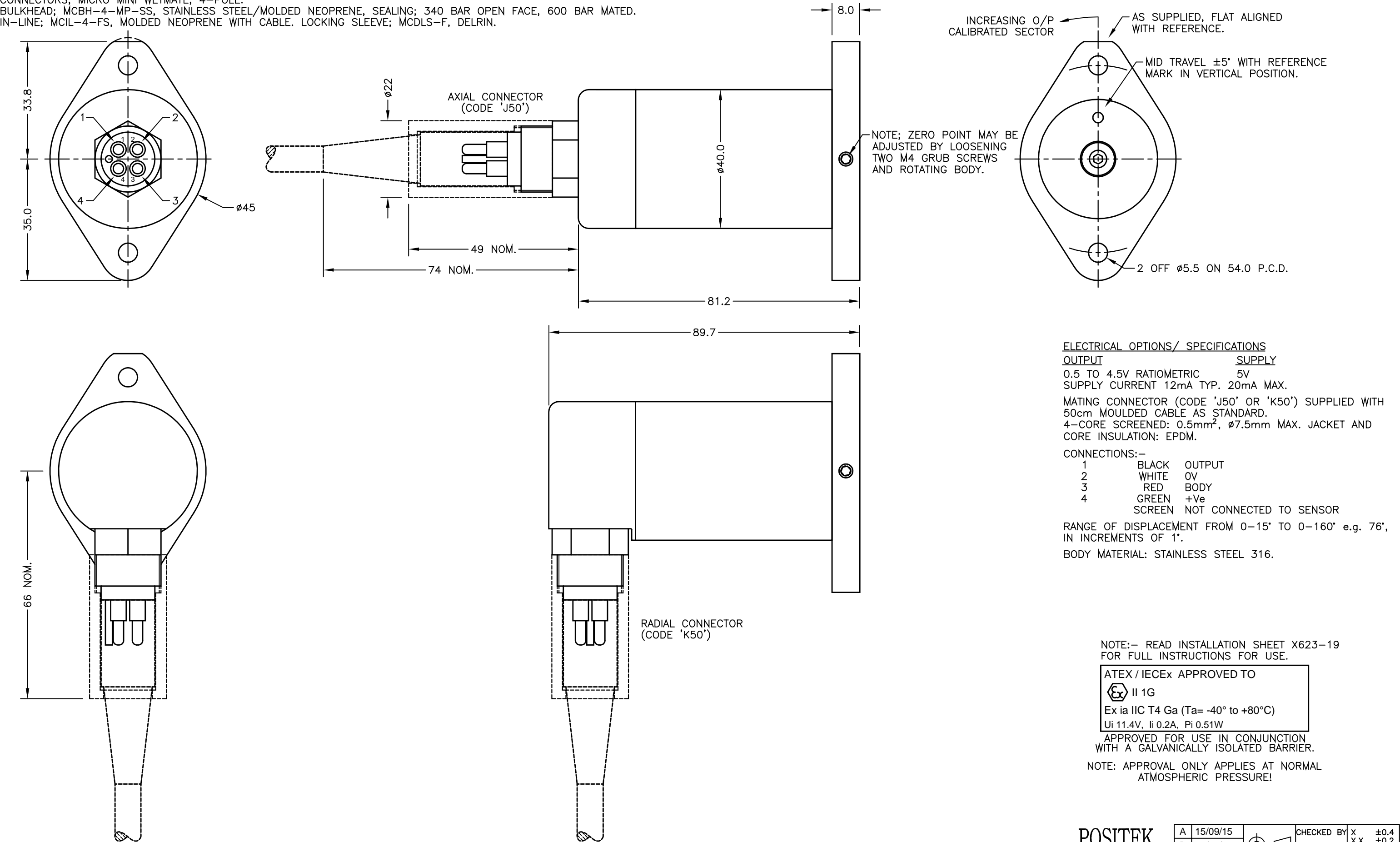


CONNECTORS; MICRO MINI WETMATE, 4-POLE.
BULKHEAD; MCBH-4-MP-SS, STAINLESS STEEL/MOLDED NEOPRENE, SEALING; 340 BAR OPEN FACE, 600 BAR MATED.
IN-LINE; MCIL-4-FS, MOLDED NEOPRENE WITH CABLE. LOCKING SLEEVE; MCDLS-F, DELRIN.

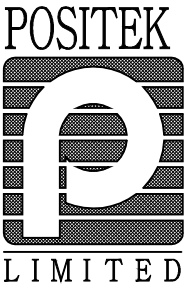


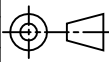
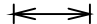
A	FIRST ISSUE.	RDS
B	RADIAL CONN ADDED - RAN1129.	PDM
C	CABLE COLOURS CORECTED - RAN1190	PDM
D	RANGE NOTE AMENDED ~ RAN1200	PDM



MAXIMUM WORKING DEPTH: 3500 METRES 350 BAR. WHERE THE FREE END OF THE CABLE IS TO BE TERMINATED IN A SUBMERGED POSITION, ADEQUATE SEALING MUST BE PROVIDED TO PROTECT CONNECTIONS.

DRAWINGS NOT TO BE CHANGED WITHOUT REFERENCE TO THE CHANGE PROCEDURE.
CHANGES TO PARTS USED IN INTRINSICALLY SAFE PRODUCT MUST BE APPROVED
BY THE AUTHORISED PERSON
THIS IS AN UNCONTROLLED PRINT AND WILL NOT BE UPDATED.



A	15/09/15		CHECKED BY	X	±0.4	
B	12/12/16		RDS	X.X	±0.2	
C	14/06/17			X.XX	±0.1	
D	13/09/17			DIMS	mm	
		DESCRIPTION				
		INTRINSICALLY SAFE 350 BAR				
		SUBMERSIBLE LARGE ANGLE				
		TILT SENSOR				
SCALE		DRAWING NUMBER		REV		
10mm		X623-11		D		
				SHEET 1 OF 1		