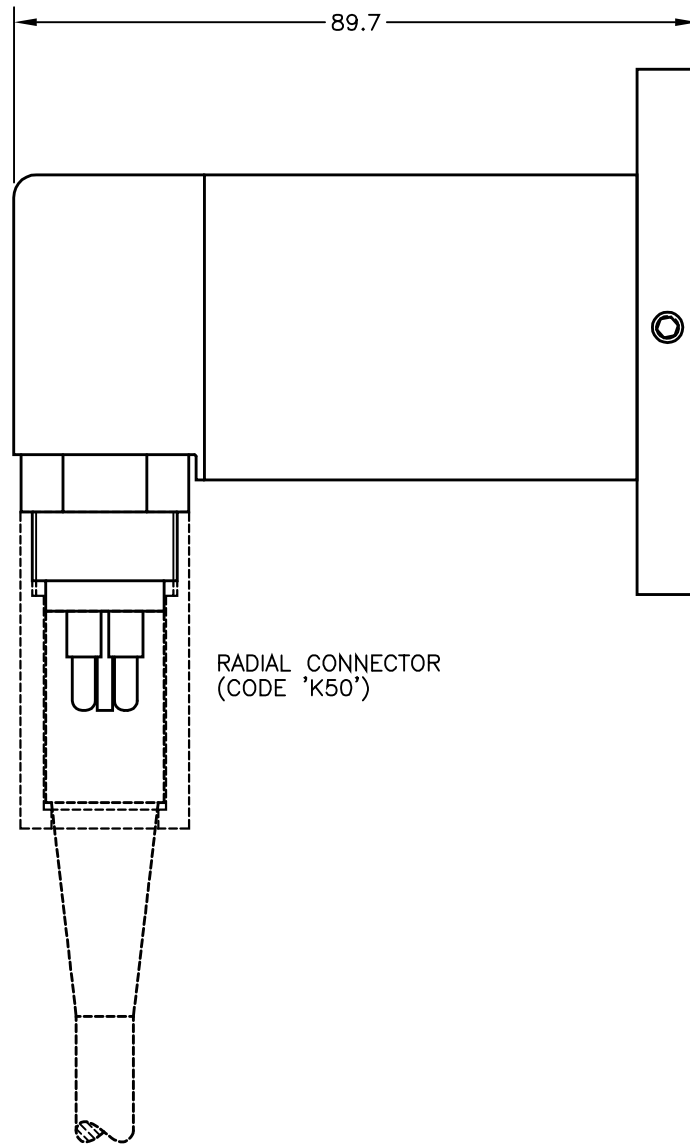
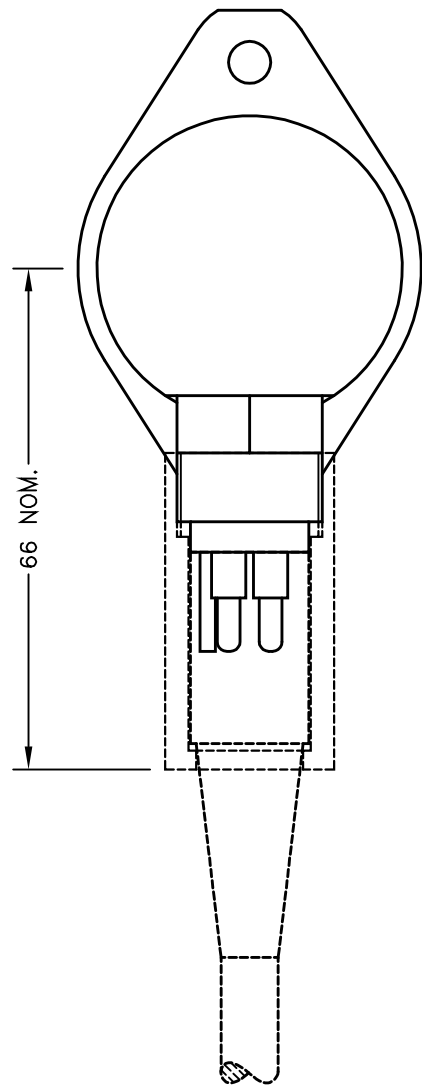
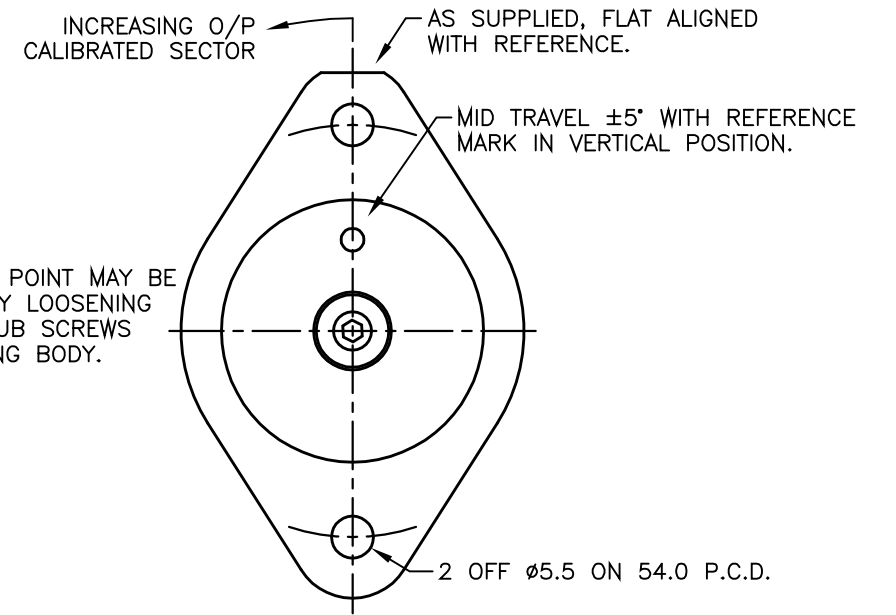
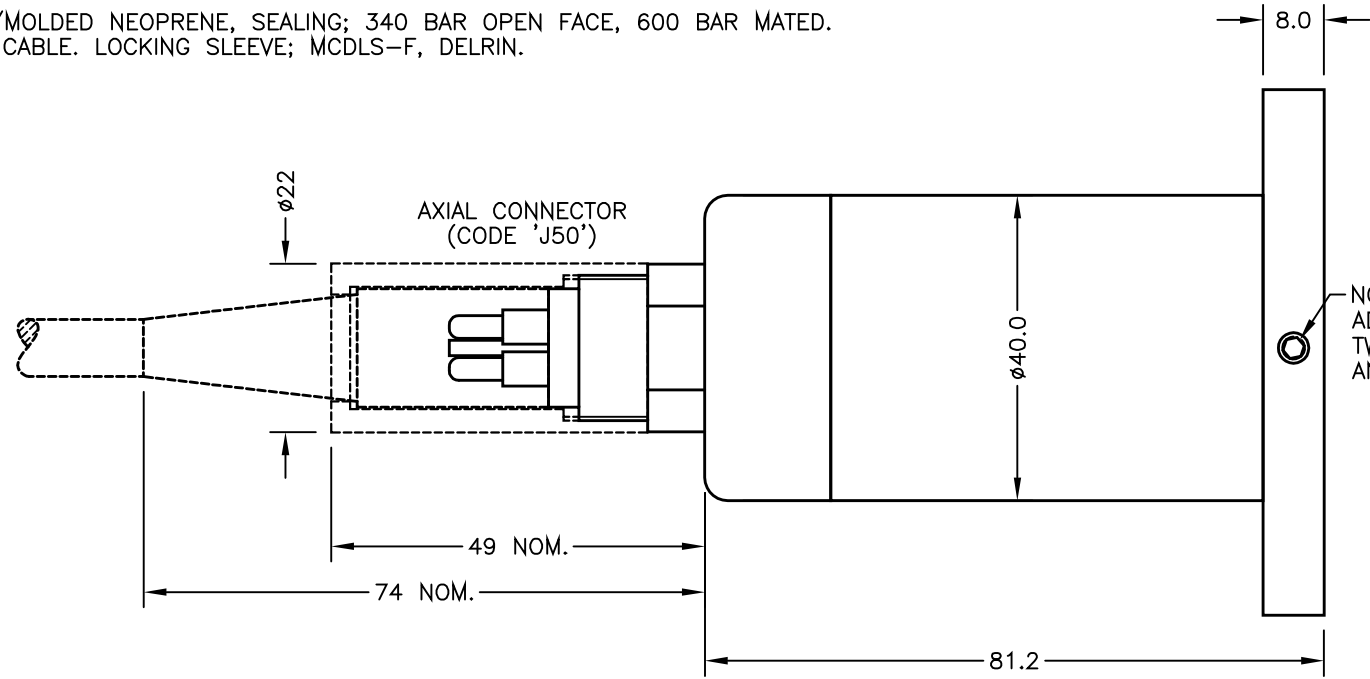
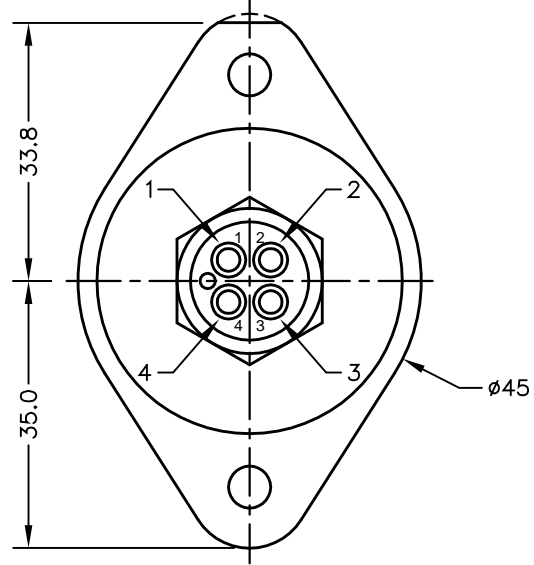


CONNECTORS; MICRO MINI WETMATE, 4-POLE.  
 BULKHEAD; MCBH-4-MP-SS, STAINLESS STEEL/MOLDED NEOPRENE, SEALING; 340 BAR OPEN FACE, 600 BAR MATED.  
 IN-LINE; MCIL-4-FS, MOLDED NEOPRENE WITH CABLE. LOCKING SLEEVE; MCDLS-F, DELRIN.



**ELECTRICAL OPTIONS/ SPECIFICATIONS**

OUTPUT OPTION	OUTPUT	SUPPLY	
A	0.5 TO 4.5V RATIOMETRIC	5V	STANDARD
B	$\pm 5V$	$\pm 15V$	
C	0.5 TO 9.5V	24V	BUFFERED
D	$\pm 10V$	$\pm 15V$	
G	0.5 TO 4.5V	24V	
	SUPPLY CURRENT 12mA TYP. 20mA MAX.		
E	4 TO 20mA 2-WIRE	24V	BUFFERED
F	4 TO 20mA 3-WIRE SINK	24V	
H	4 TO 20mA 3-WIRE SOURCE	24V	
	SINK VERSION OUTPUT COMPLIANCE 5-28V		
	SOURCE VERSION DRIVE 300 $\Omega$ MAX TO 0V		

MATING CONNECTOR (CODE 'J50' OR 'K50') SUPPLIED WITH 50cm MOULDED CABLE AS STANDARD.  
 4-CORE SCREENED: 0.5mm<sup>2</sup>,  $\phi 7.5$ mm MAX. JACKET AND CORE INSULATION: EPDM.

**CONNECTIONS:-**

1	BLACK	OUTPUT
2	WHITE	0V
3	RED	BODY (OPTIONS: A, C, E-H) -Ve (OPTIONS: B OR D)
4	GREEN	+Ve

SCREEN NOT CONNECTED TO SENSOR

RANGE OF DISPLACEMENT FROM 0-15° TO 0-160° e.g. 76°, IN INCREMENTS OF 1°.

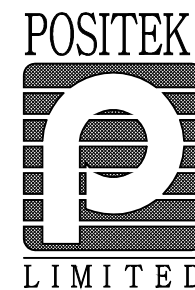
BODY MATERIAL: STAINLESS STEEL 316.

A	FIRST ISSUE.	RDS
B	RADIAL CONN ADDED - RAN1129.	PDM
C	CABLE COLOURS CORRECTED - RAN1190	PDM
D	RANGE NOTE AMENDED - RAN1200	PDM



MAXIMUM WORKING DEPTH: 3500 METRES 350 BAR. WHERE THE FREE END OF THE CABLE IS TO BE TERMINATED IN A SUBMERGED POSITION, ADEQUATE SEALING MUST BE PROVIDED TO PROTECT CONNECTIONS.

DRAWINGS NOT TO BE CHANGED WITHOUT REFERENCE TO THE CHANGE PROCEDURE.  
 CHANGES TO PARTS USED IN INTRINSICALLY SAFE PRODUCT MUST BE APPROVED BY THE AUTHORISED PERSON  
 THIS IS AN UNCONTROLLED PRINT AND WILL NOT BE UPDATED.



A	15/09/15		CHECKED BY	X	$\pm 0.4$
B	12/12/16		RDS	X.X	$\pm 0.2$
C	14/06/17			X.XX	$\pm 0.1$
D	13/09/17				DIMS mm
		DESCRIPTION			
		S623 350 BAR SUBMERSIBLE LARGE ANGLE TILT SENSOR			
		SCALE	DRAWING NUMBER	S623-11	REV D
		10mm			
					SHEET 1 OF 1