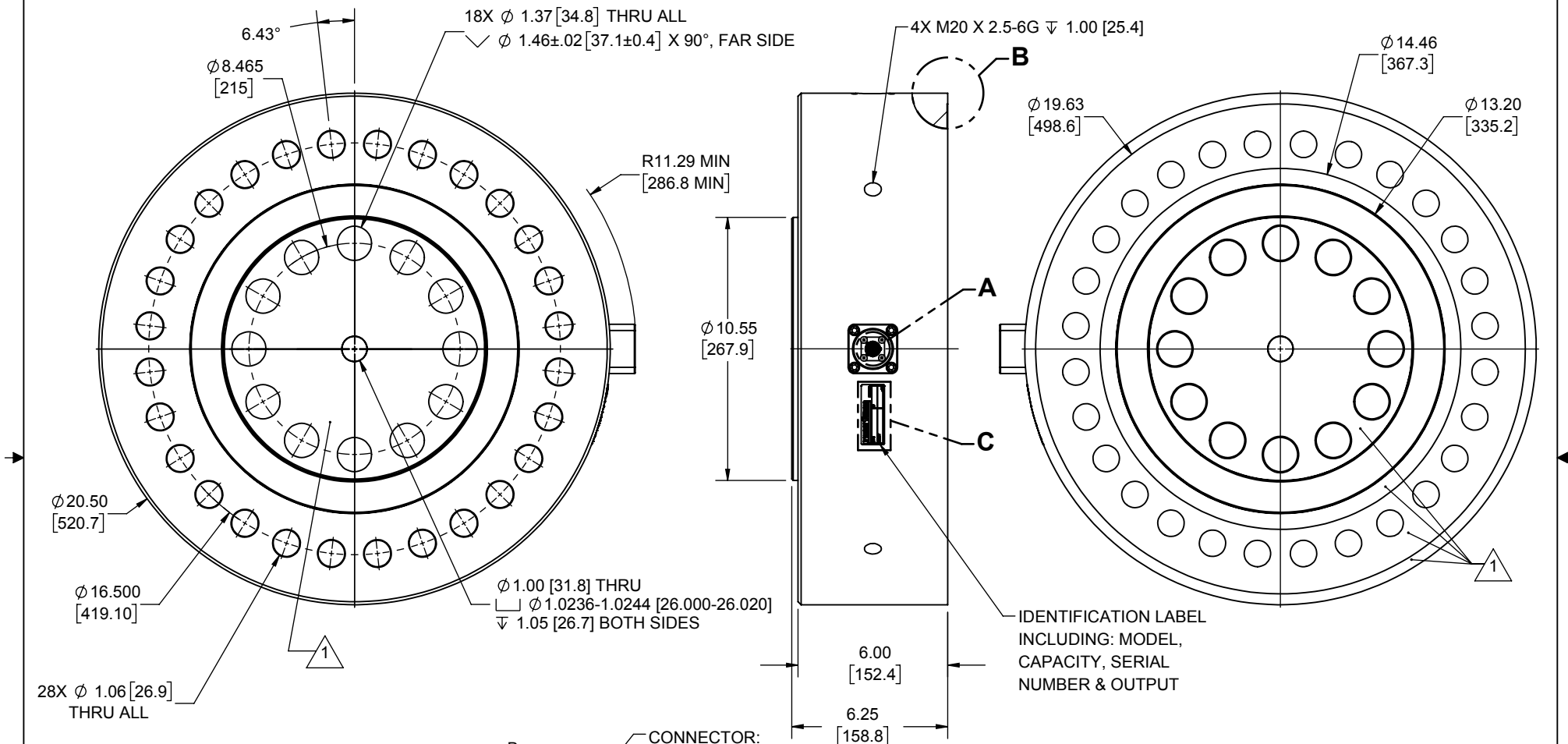


LOAD CELL CHARACTERISTICS	
CAPACITY	2400 KN
NOMINAL OUTPUT	1.7 mV/V @ 2400 KN

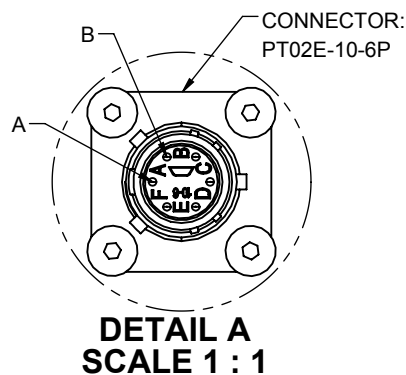
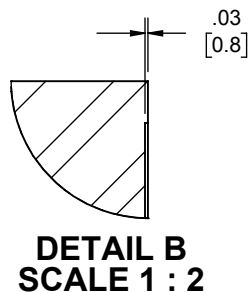
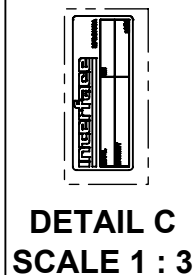
Interface Inc. claims proprietary rights in the information disclosed herein. This drawing is furnished in confidence on the express understanding that neither it nor any reproduction thereof will be disclosed to others or used for the purpose of manufacture or procurement of the article or part shown herein without written permission of Interface Inc. The drawing shall remain the property of Interface Inc. and shall be returned upon request by Interface Inc.

82728			
REVISIONS			
REV.	DESCRIPTION	DATE	APPROVED
A	INITIAL RELEASE	06/14/2019	CS



2. PAINT COLOR: INTERFACE BLUE

$\triangle$  1 NO PAINT



CONNECTOR PINOUT	
PIN	FUNCTION
A	+ EXCITATION
B	+ SIGNAL
C	- SIGNAL
D	- EXCITATION
E	- SENSE
F	+ SENSE
TENSION UPSCALE	

UNLESS OTHERWISE SPECIFIED  
 DIMENSIONS ARE IN INCHES [mm]  
 TOLERANCES ARE:  
 ANGLES  $\pm$  0° 30'  
 .XX  $\pm$  .01 [0.25]  
 .XXX  $\pm$  .005 [0.13]

CREATOR	DATE
DESIGNED: CS	06/13/2019
DETAILED: BRET B.	06/13/2019
WEIGHT: (APPROX) 442 (lbs)	

**Interface** 7418 E. HELM DRIVE  
**FORCE MEASUREMENT SOLUTIONS**, SCOTTSDALE, AZ 85260 USA

TITLE:  
**OUTLINE MODEL:  
 1288-2400KN**

SIZE: A	DWG. NO: 82728	REV: A
SCALE: 1:6	SHEET 1 OF 1	