

LOAD CELL CHARACTERISTICS

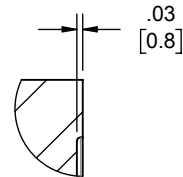
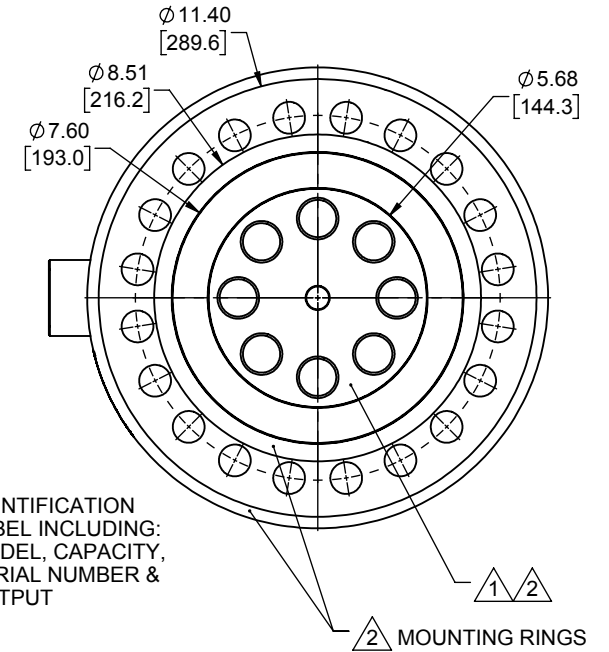
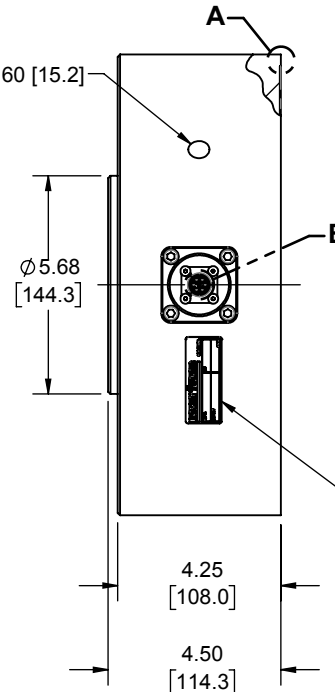
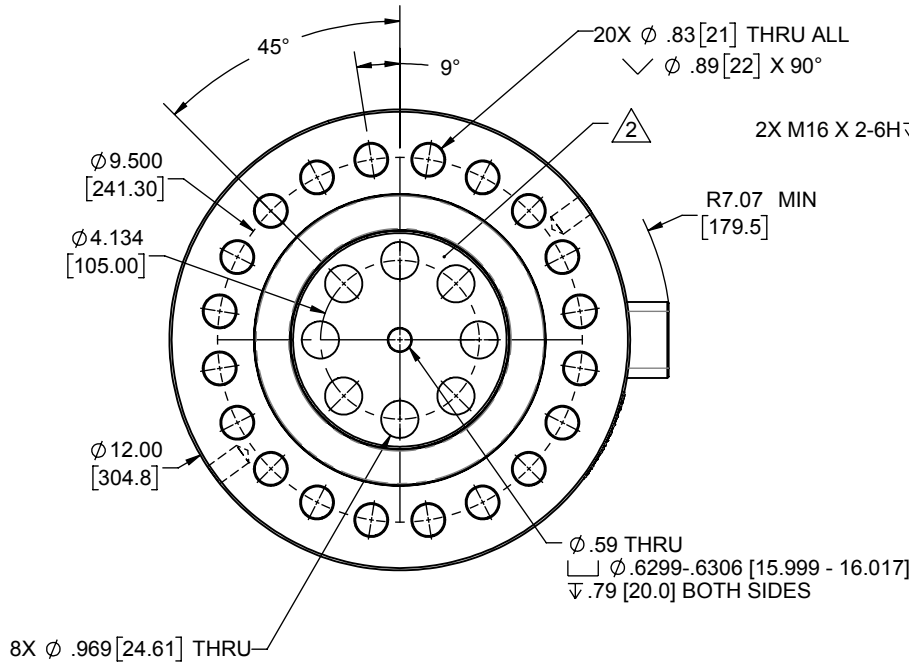
CAPACITY 1000 kN, 1200 kN

Interface Inc. claims proprietary rights in the information disclosed herein. This drawing is furnished in confidence on the express understanding that neither it nor any reproduction thereof will be disclosed to others or used for the purpose of manufacture or procurement of the article or part shown hereon without written permission of Interface Inc. The drawing shall remain the property of Interface Inc. and shall be returned upon request by Interface Inc.

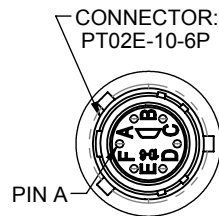
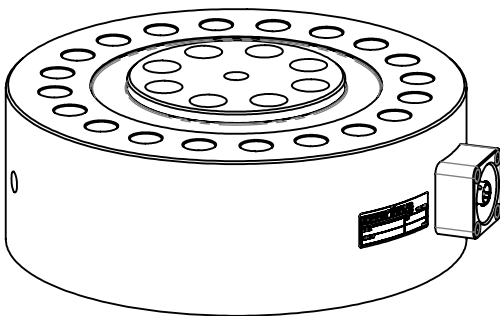
80524

REVISIONS

REV.	DESCRIPTION	DATE	APPROVED
A	INITIAL RELEASE	01/05/05	
B	ADDED 1000KN CAPACITY; REDRAWN & UPDATED TO CURRENT STANDARDS	1/26/2017	BB
C	REPLACED CONN PROTECTOR	9/19/2017	CS



**DETAIL A
SCALE 1 : 1**



**DETAIL B
SCALE 1 : 1**

CONNECTOR PINOUT	
PIN	FUNCTION
A	+ EXCITATION
B	+ OUTPUT
C	- OUTPUT
D	- EXCITATION
E	- SENSE
F	+ SENSE
TENSION UPSCALE	

- DO NOT PAINT.
- FLANGE BOLT SURFACE BELOW FLEXURE MOUNTING RINGS .03 [0.8].

UNLESS OTHERWISE SPECIFIED
DIMENSIONS ARE IN INCHES [mm]
TOLERANCES ARE:
ANGLES \pm 0° 30'
.XX \pm .01 [0.25]
.XXX \pm .005 [0.13]

interface
ADVANCED FORCE MEASUREMENT
7401 E. BUTHERUS DR. SCOTTSDALE, AZ USA 85260

CREATOR: JEP
DESIGNED: JEP
DATE: 12/28/2004
DETAILED: JEP
WEIGHT: (APPROX) 102 (lbs)

TITLE:
**OUTLINE MODEL: 1258
FLANGE MOUNT HUB**

SIZE: DWG. NO: **80524**
SCALE: 1:5
SHEET 1 OF 1

REV: **C**