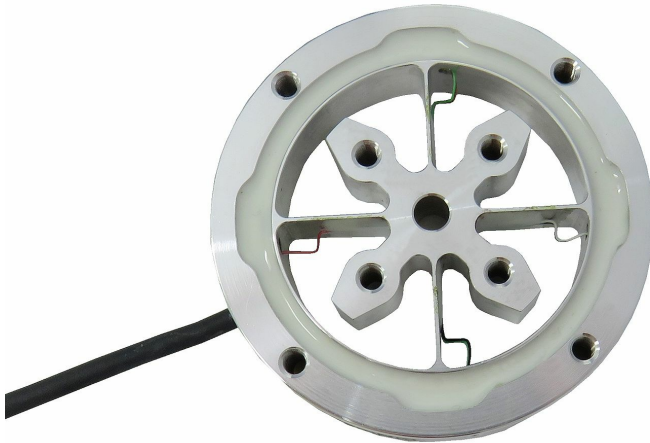
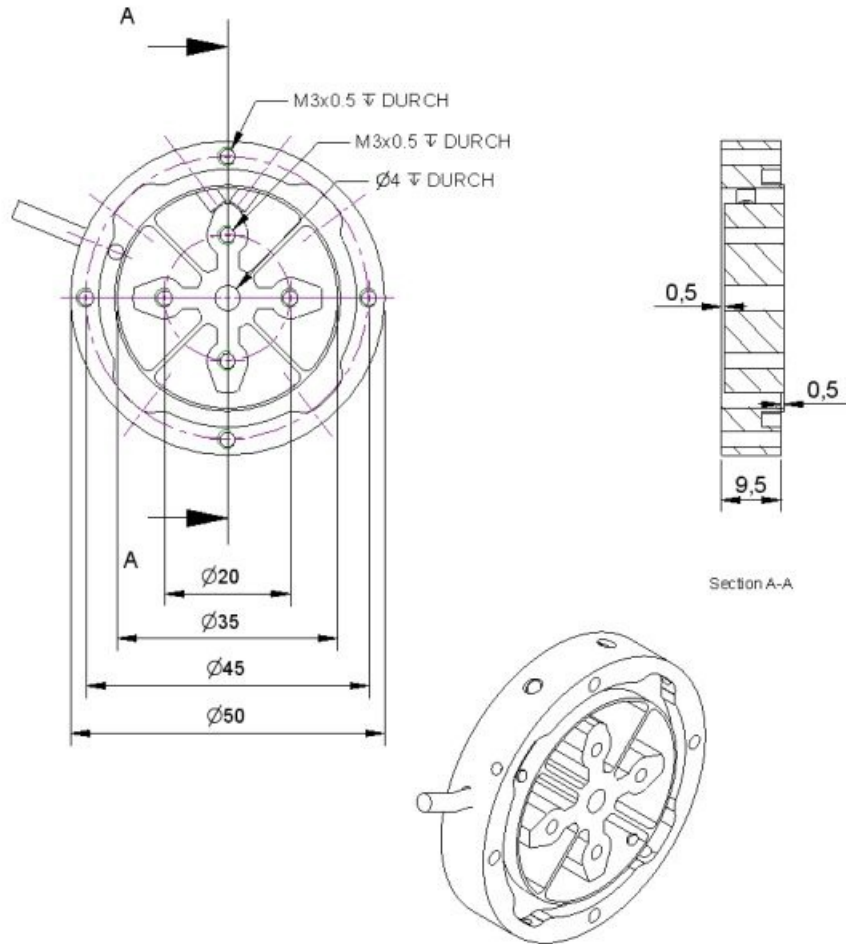


## TD50 $\pm 300\text{mNm}$



### Description

## Dimensions



## Technical Data

### Electrical Data

Input resistance	350 Ohm
Tolerance input resistance	20 Ohm
Output resistance	350 Ohm
Insulation resistance	2 GOhm
Rated range of excitation voltage f	2.5 ... 5 V
Operating range of excitation voltage f	1 ... 5 V
Zero signal	0.1 mV/V
characteristic value range min	0.5 mV/V / FS
characteristic value range max	1.1 mV/V / FS

### Precision

Accuracy class	0,2%
Relative linearity error	0.1 %FS
Relative zero signal hysteresis	0.1 %FS
Temperature effect on zero signal	0.1 %FS/K
Temperature effect on characteristic value	0.1 %RD/K
Relative creep	0.05 %FS

### Connection Data

Connection type	4 conductor open
Name of the connection	STC-31V-4
Cable length	2 m

### Temperature

Rated temperature range f	-20 ... 60 °C
Operating temperature range f	-20 ... 70 °C
Storage temperature range f	-20 ... 70 °C
Environmental protection	IP65

### Basis Data

Type	bending spring
Rated torque	300 mNm
Bending moment limit	3 Nm
Maximum operating torque	150 %FS
Breaking torque	400 %FS
Rated torsion angle	0.7 °/FS
Axial force limit	50 N
Lateral force limit	50 N
Torque introduction	pitch circle
Dimension 1	Ø20
drehmomentausleitung	pitch circle
Dimension 2	Ø45
Diameter	50 mm



---

length	10 mm
Material	Aluminium alloy

---





## Pin Configuration

Symbol	Description	Wire colour
+Us	positive bridge supply	red
-Us	negative bridge supply	black
+Ud	positive bridge output	green
-Ud	negative bridge output	white

*Pressure load: positive output signal.  
Shield- transparent.*

## accessories

Description	Description
	Factory calibration certificate Nm/50/5 Detection of the characteristic value and traceability on DAkkS torque device; 0.025Nm... 50Nm
	Factory calibration certificate Nm/50/5/System Detection of the characteristic value and traceability on DAkkS torque device; 0.025Nm... 50Nm; incl. calibration, torque sensor + amplifier