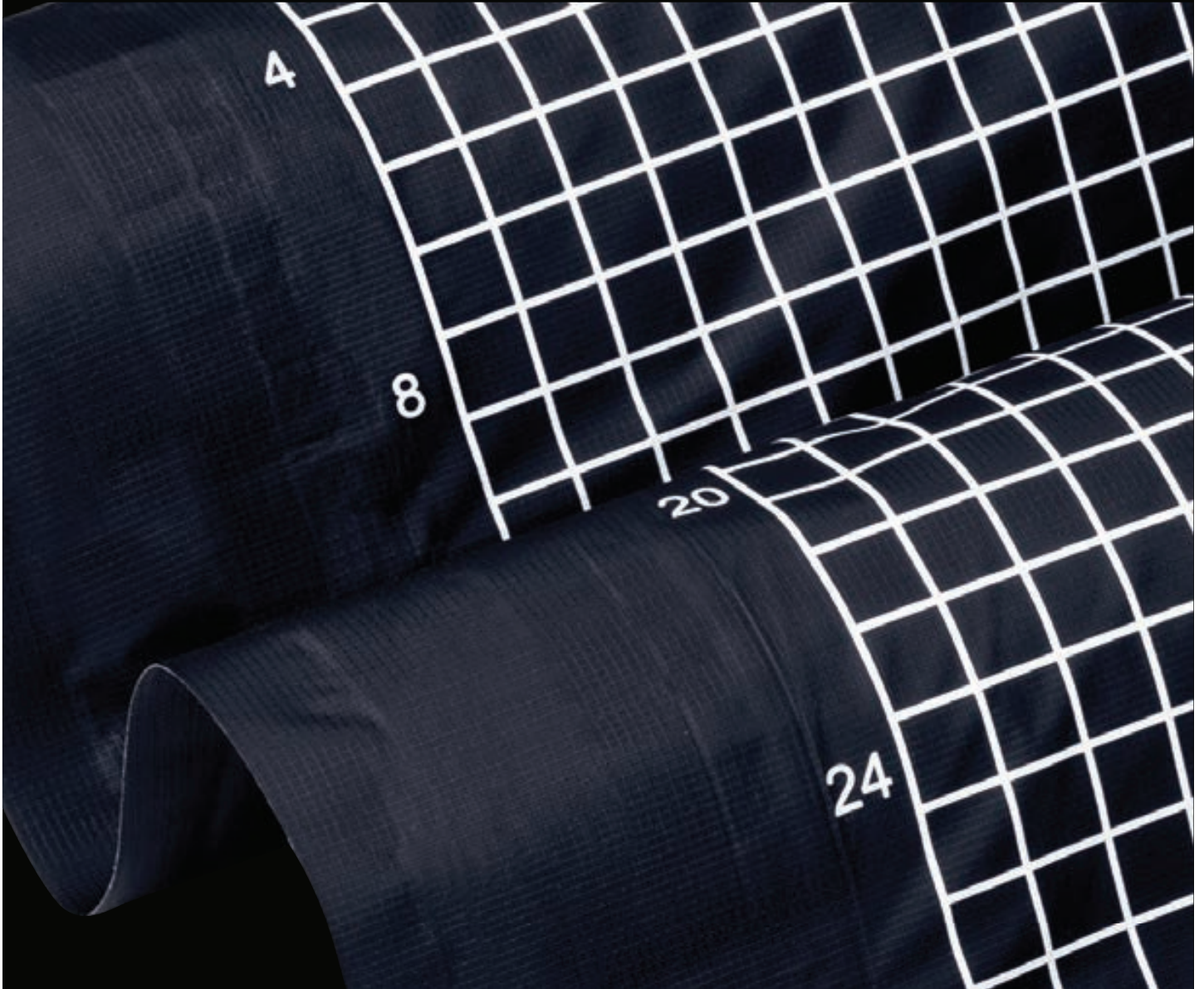


TEST & MEASUREMENT

PRODUCT CATALOGUE

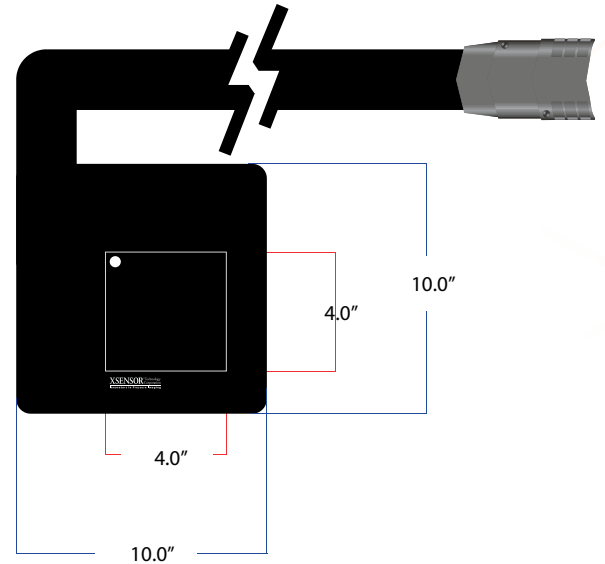


XSENSOR® Technology
Corporation

PRODUCT DESCRIPTION

The X3 LX100 series of sensors are designed as a conformable and durable sensor for measuring interface pressures. These capacitive sensors are ideal for assessing automotive and aerospace seat designs and manufacturing quality. The LX100 series of sensors are highly accurate due to high repeatability, low hysteresis, and low creep characteristics. Due to their accuracy, repeatability, and durability they are also used for automated quality control processes.

LX100:40.40.10



SENSING	
Sensor Technology	Capacitive Pressure Imaging
Pressure Range	0.1-3.87psi
	0.07-2.7N/cm ²
Spatial Resolution	0.1"
	2.54mm
Accuracy	± 5% full scale*
Sampling Frame Rate	39 frames/s**

PHYSICAL CHARACTERISTICS		
Total Area	10" x 10"	24.8cm x 24.8cm
Sensing Area	4" x 4"	10.2cm x 10.2cm
Thickness (Sensing Area, uncompressed)	0.035"	0.09cm
Thickness (Border – cabling side)	0.08"	0.2cm
Border Width (cabling side)	4"	10.2cm
Border Width (non-cabling side)	2"	5.1cm
Cable	31.5" x 2" x 0.16"	80cm x 5.1cm x 0.4cm
Connector	4.76" x 2.76" x 0.9"	12.1cm x 7cm x 2.3cm

KEY FEATURES

- High-resolution sensors with a 2.54 mm pitch (resolution) and 1,600 sensing points
- Very good repeatability
- Low hysteresis and consistent data
- Designed for comfort and healthcare pressure seating applications
- Durable sensor that conforms well to surfaces with a proven track record

REQUIREMENTS FOR OPERATION

- X3 Pro Sensor Pack
- X3 Pro Platform
- X3 Pro Power Supply
- X3 Pro Software

* When verified using the standard XSENSOR verification process.

**Sampling rate based on using X3 PRO Electronics. Frame rate may vary based on computer configuration.

SENSING	
Ambient Temperature	10°C–40°C
Ambient Humidity	5% to 90% RH

PRODUCT DESCRIPTION

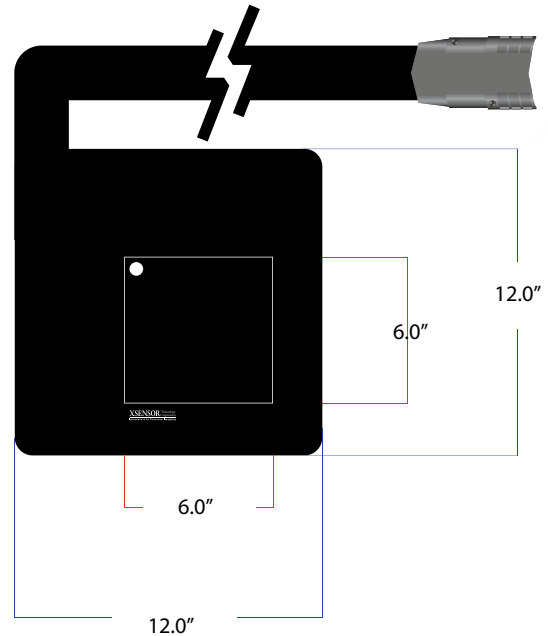
The X3 LX100 series of sensors are designed as a conformable and durable sensor for measuring interface pressures. These capacitive sensors are ideal for assessing automotive and aerospace seat designs and manufacturing quality. The LX100 series of sensors are highly accurate due to high repeatability, low hysteresis, and low creep characteristics. Due to their accuracy, repeatability, and durability they are also used for automated quality control processes.

SENSING	
Sensor Technology	Capacitive Pressure Imaging
Pressure Range	0.1-3.87psi
	0.07N-2.7/cm ²
Spatial Resolution	0.1" 2.54mm
Accuracy	± 5% full scale*
Sampling Frame Rate	30 frames/s**

PHYSICAL CHARACTERISTICS		
Total Area	12" x 12"	30.5cm x 30.5cm
Sensing Area	6" x 6"	10.2cm x 10.2cm
Thickness <small>(Sensing Area, uncompressed)</small>	0.035"	0.09cm
Thickness <small>(Border – cabling side)</small>	0.08"	0.2cm
Border Width <small>(cabling side)</small>	6" x 6"	15.2cm x 15.2cm
Border Width <small>(non-cabling side)</small>	2"	5.1cm
Cable	31.5" x 2" x 0.16"	80cm x 5.1cm x 0.4cm
Connector	4.76" x 2.76" x 0.9"	12.1cm x 7cm x 2.3cm

SENSING	
Ambient Temperature	10°C–40°C
Ambient Humidity	5% to 90% RH

LX100:60.60.10



KEY FEATURES

- High-resolution sensors with a 2.54 mm pitch (resolution) and 3,600 sensing points
- Very good repeatability
- Low hysteresis and consistent data
- Designed for comfort and healthcare pressure seating applications
- Durable sensor that conforms well to surfaces with a proven track record

REQUIREMENTS FOR OPERATION

- X3 Pro Sensor Pack
- X3 Pro Platform
- X3 Pro Power Supply
- X3 Pro Software

* When verified using the standard XSENSOR verification process.

**Sampling rate based on using X3 PRO Electronics. Frame rate may vary based on computer configuration.

PRODUCT DESCRIPTION

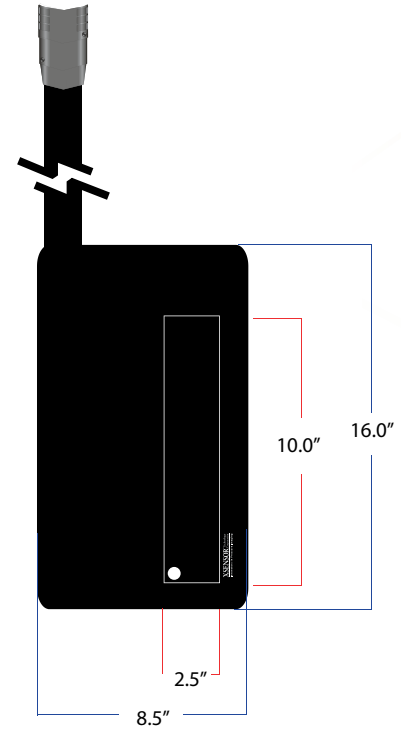
The X3 LX100 series of sensors are designed as a conformable and durable sensor for measuring interface pressures. These capacitive sensors are ideal for assessing automotive and aerospace seat designs and manufacturing quality. The LX100 series of sensors are highly accurate due to high repeatability, low hysteresis, and low creep characteristics. Due to their accuracy, repeatability, and durability they are also used for automated quality control processes.

LX100:25.100.10

SENSING	
Sensor Technology	Capacitive Pressure Imaging
Pressure Range	0.1– 3.87 psi
	0.07– 2.7 N/cm ² ,
Spatial Resolution	0.1" 2.54mm
Accuracy	± 5% full scale*
Sampling Frame Rate	73 frames/s**

PHYSICAL CHARACTERISTICS		
Total Area	8.5" x 16"	21.6cm x 40.7cm
Sensing Area	2.5" x 10"	6.35cm x 25.4cm
Thickness (Sensing Area, uncompressed)	0.035"	0.09cm
Thickness (Border – cabling side)	0.1"	0.25cm
Border Width (cabling side)	4"	10.2cm
Border Width (non-cabling side)	2"	5.1cm
Cable	31.5" x 2" x 0.27"	80cm x 5.1cm x 0.7cm
Connector	4.76" x 2.76" x 0.9"	12.1cm x 7cm x 2.3cm

SENSING	
Ambient Temperature	10°C–40°C
Ambient Humidity	5% to 90% RH



KEY FEATURES

- High-resolution sensors with a 2.54 mm pitch (resolution) and 2,500 sensing points
- Very good repeatability
- Low hysteresis and consistent data throughout long trials
- Designed for higher pressure seating applications such as ingress-egress testing
- Durable sensor that conforms well to surfaces

REQUIREMENTS FOR OPERATION

- 2 X3 Pro Sensor Packs
- X3 Pro Platform
- X3 Pro Power Supply
- X3 Pro Software

* When verified using the standard XSENSOR verification process.

**Sampling rate based on using X3 PRO Electronics. Frame rate may vary based on computer configuration.

PRODUCT DESCRIPTION

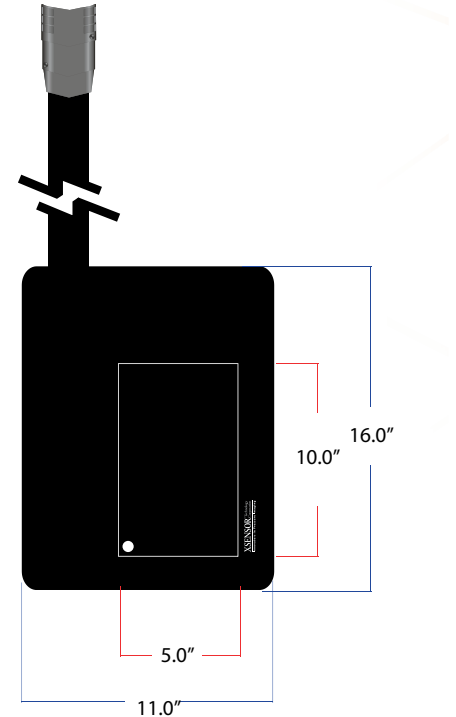
The X3 LX100 series of sensors are designed as a conformable and durable sensor for measuring interface pressures. These capacitive sensors are ideal for assessing automotive and aerospace seat designs and manufacturing quality. The LX100 series of sensors are highly accurate due to high repeatability, low hysteresis, and low creep characteristics. Due to their accuracy, repeatability, and durability they are also used for automated quality control processes.

SENSING	
Sensor Technology	Capacitive Pressure Imaging
Pressure Range	0.1–3.87psi
	0.07-2.7N/cm ²
Spatial Resolution	0.1" 2.54mm
Accuracy	± 5% full scale*
Sampling Frame Rate	36 frames/s**

PHYSICAL CHARACTERISTICS		
Total Area	11" x 16"	21.6cmx40.7cm
Sensing Area	5" x 10"	6.35cm x 25.4cm
Thickness <small>(Sensing Area, uncompressed)</small>	0.035"	0.09cm
Thickness <small>(Border – cabling side)</small>	0.1"	0.25cm
Border Width <small>(cabling side)</small>	4"	10.2cm
Border Width <small>(non-cabling side)</small>	2"	5.1cm
Cable	31.5" x 2" x 0.27"	80cm x 5.1cm x 0.7cm
Connector	4.76" x 2.76" x 0.9"	12.1cm x 7cm x 2.3cm

SENSING	
Ambient Temperature	10°C–40°C
Ambient Humidity	5% to 90% RH

LX100:50.100.10



KEY FEATURES

- High-resolution sensors with a 2.54 mm pitch (resolution) and 5,000 sensing points
- Very good repeatability
- Low hysteresis and consistent data throughout long trials
- Designed for higher pressure seating applications such as ingress-egress testing
- Durable sensor that conforms well to surfaces

REQUIREMENTS FOR OPERATION

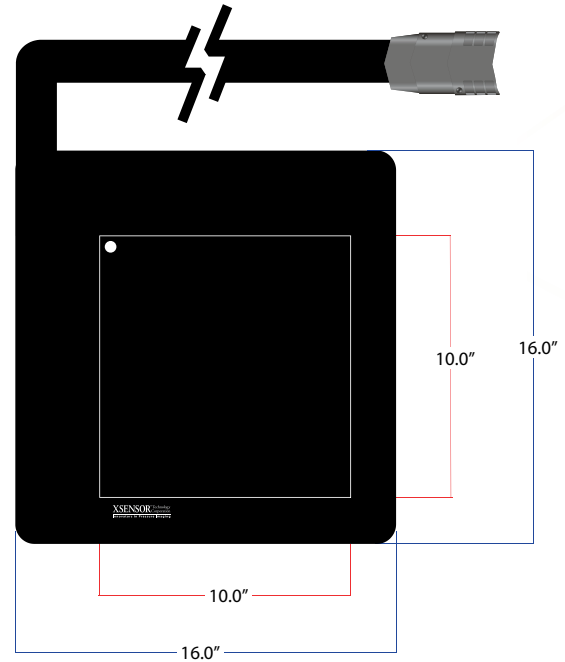
- X3 Pro Sensor Pack
- X3 Pro Platform
- X3 Pro Power Supply
- X3 Pro Software

* When verified using the standard XSENSOR verification process.
**Sampling rate based on using X3 PRO Electronics. Frame rate may vary based on computer configuration.

PRODUCT DESCRIPTION

The X3 LX100 series of sensors are designed as a conformable and durable sensor for measuring interface pressures. These capacitive sensors are ideal for assessing automotive and aerospace seat designs and manufacturing quality. The LX100 series of sensors are highly accurate due to high repeatability, low hysteresis, and low creep characteristics. Due to their accuracy, repeatability, and durability they are also used for automated quality control processes.

LX100:100.100.10



SENSING	
Sensor Technology	Capacitive Pressure Imaging
Pressure Range	0.1–3.87psi
	0.07–2.7N/cm ²
Spatial Resolution	0.1" 2.54mm
Accuracy	± 5% full scale*
Sampling Frame Rate	14 frames/s**

PHYSICAL CHARACTERISTICS		
Total Area	16" x 16"	40.7cm x 40.7cm
Sensing Area	10" x 10"	25.4m x 25.4cm
Thickness (Sensing Area, uncompressed)	0.035"	0.09cm
Thickness (Border – cabling side)	0.1"	0.25cm
Border Width (cabling side)	4"	10.2cm
Border Width (non-cabling side)	2"	5.1cm
Cable	31.5" x 2" x 0.03"	80cm x 5.1cm x 0.76cm
Connector	4.76" x 2.76" x 0.9"	12.1cm x 7cm x 2.3cm

KEY FEATURES

- High-resolution sensors with a 2.54mm pitch (resolution) and 10,000 sensing points
- Very good repeatability
- Low hysteresis and consistent data throughout long trials
- Designed for higher pressure seating applications such as ingress-egress testing
- Durable sensor that conforms well to surfaces

REQUIREMENTS FOR OPERATION

- X3 Pro Sensor Pack
- X3 Pro Platform
- X3 Pro Power Supply
- X3 Pro Software

* When verified using the standard XSENSOR verification process.

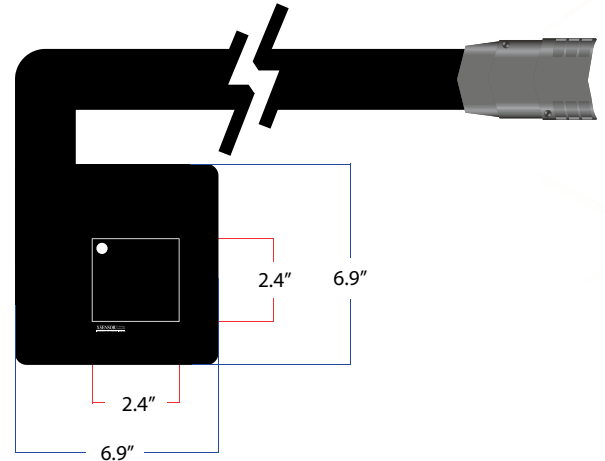
**Sampling rate based on using X3 PRO Electronics. Frame rate may vary based on computer configuration.

SENSING	
Ambient Temperature	10°C–40°C
Ambient Humidity	5% to 90% RH

PRODUCT DESCRIPTION

The X3 LX100 series of sensors are designed as a conformable and durable sensor for measuring interface pressures. These capacitive sensors are ideal for assessing automotive and aerospace seat designs and manufacturing quality. The LX100 series of sensors are highly accurate due to high repeatability, low hysteresis, and low creep characteristics. Due to their accuracy, repeatability, and durability they are also used for automated quality control processes.

LX100:12.12.05



SENSING	
Sensor Technology	Capacitive Pressure Imaging
Pressure Range	0.1-3.87psi
	0.07-2.7N/cm ²
Spatial Resolution	0.2" 5.08mm
Accuracy	± 5% full scale*
Sampling Frame Rate	95 frames/s**

PHYSICAL CHARACTERISTICS		
Total Area	6.9" x 6.9"	17.5cm x 17.5cm
Sensing Area	2.4" x 2.4"	6.1cm x 6.1cm
Thickness (Sensing Area, uncompressed)	0.03"	0.09cm
Thickness (Border - cabling side)	0.07"	0.18cm
Border Width (cabling side)	3"	7.7cm
Border Width (non-cabling side)	1.5"	3.8cm
Cable	43.5" x 2" x 0.16"	110.5cm x 2.5cm x 0.4cm
Connector	4.76" x 2.76" x 0.9"	12.1cm x 7cm x 2.3cm

KEY FEATURES

- High-resolution sensors with a 5.08 mm pitch (resolution) and 144 sensing points
- Very good repeatability
- Low hysteresis and consistent data throughout long trials
- Designed for higher pressure seating applications such as ingress-egress testing
- Durable sensor that conforms well to surfaces

REQUIREMENTS FOR OPERATION

- X3 Pro Sensor Pack
- X3 Pro Platform
- X3 Pro Power Supply
- X3 Pro Software

* When verified using the standard XSENSOR verification process.

**Sampling rate based on using X3 PRO Electronics. Frame rate may vary based on computer configuration.

SENSING	
Ambient Temperature	10°C-40°C
Ambient Humidity	5% to 90% RH

PRODUCT DESCRIPTION

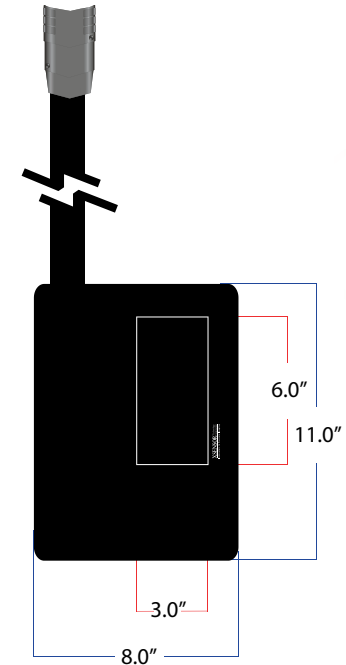
The X3 LX100 series of sensors are designed as a conformable and durable sensor for measuring interface pressures. These capacitive sensors are ideal for assessing automotive and aerospace seat designs and manufacturing quality. The LX100 series of sensors are highly accurate due to high repeatability, low hysteresis, and low creep characteristics. Due to their accuracy, repeatability, and durability they are also used for automated quality control processes.

LX100:15.30.05

SENSING	
Sensor Technology	Capacitive Pressure Imaging
Pressure Range	0.1-3.87psi
	0.07 – 2.7N/cm ²
Spatial Resolution	0.2" 5.08mm
Accuracy	± 5% full scale*
Sampling Frame Rate	95 frames/s**

PHYSICAL CHARACTERISTICS		
Total Area	8" x 11"	20.3cm x 27.9cm
Sensing Area	3" x 6"	7.6cm x 15.2cm
Thickness <small>(Sensing Area, uncompressed)</small>	0.03"	0.08cm
Thickness <small>(Border – cabling side)</small>	0.07"	0.18cm
Border Width <small>(cabling side)</small>	3.5"	8.9cm
Border Width <small>(non-cabling side)</small>	1.5"	3.8cm
Cable	43.5" x 2" x 0.5"	110.5cm x 5.1cm x 0.5cm
Connector	4.76" x 2.76" x 0.9"	12.1cm x 7cm x 0.2cm

SENSING	
Ambient Temperature	10°C–40°C
Ambient Humidity	5% to 90% RH



KEY FEATURES

- High-resolution sensors with a 5.08mm pitch (resolution) and 450 sensing points
- Very good repeatability
- Low hysteresis and consistent data throughout long trials
- Designed for higher pressure seating applications such as ingress-egress testing
- Durable sensor that conforms well to surfaces

REQUIREMENTS FOR OPERATION

- X3 Pro Sensor Pack
- X3 Pro Platform
- X3 Pro Power Supply
- X3 Pro Software

* When verified using the standard XSENSOR verification process.

**Sampling rate based on using X3 PRO Electronics. Frame rate may vary based on computer configuration.

PRODUCT DESCRIPTION

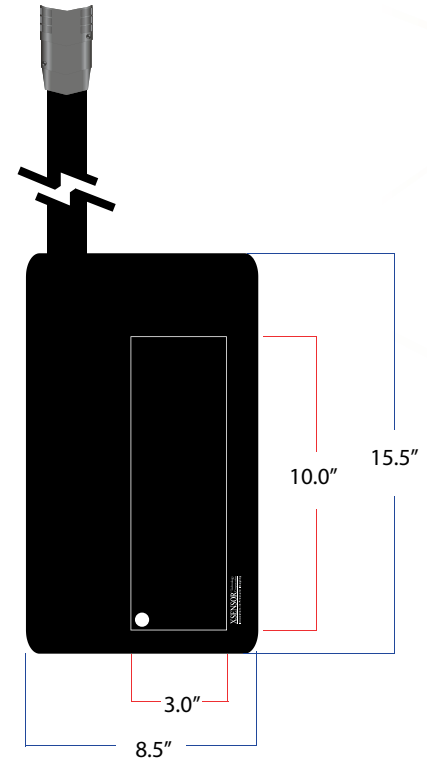
The X3 LX100 series of sensors are designed as a conformable and durable sensor for measuring interface pressures. These capacitive sensors are ideal for assessing automotive and aerospace seat designs and manufacturing quality. The LX100 series of sensors are highly accurate due to high repeatability, low hysteresis, and low creep characteristics. Due to their accuracy, repeatability, and durability they are also used for automated quality control processes.

SENSING	
Sensor Technology	Capacitive Pressure Imaging
Pressure Range	0.1-3.87psi
	0.07 – 2.7N/cm ²
Spatial Resolution	0.2" 5.08mm
Accuracy	± 5% full scale*
Sampling Frame Rate	95 frames/s**

PHYSICAL CHARACTERISTICS		
Total Area	8.5" x 15.5"	21.6cm x 39.4cm
Sensing Area	3" x 10"	7.6cm x 25.4cm
Thickness <small>(Sensing Area, uncompressed)</small>	0.03"	0.08cm
Thickness <small>(Border – cabling side)</small>	0.07"	0.18cm
Border Width <small>(cabling side)</small>	4"	10.2cm
Border Width <small>(non-cabling side)</small>	1.5"	3.8cm
Cable	43.5" x 2" x 0.16"	110.5cm x 5.1cm x 0.4cm
Connector	4.76" x 2.76" x 0.9"	12.1cm x 7cm x 2.3cm

SENSING	
Ambient Temperature	10°C–40°C
Ambient Humidity	5% to 90% RH

LX100:15.50.05



KEY FEATURES

- High-resolution sensors with a 5.08mm pitch (resolution) and 750 sensing points
- Very good repeatability
- Low hysteresis and consistent data throughout long trials
- Designed for higher pressure seating applications such as ingress-egress testing
- Durable sensor that conforms well to surfaces

REQUIREMENTS FOR OPERATION

- X3 Pro Sensor Pack
- X3 Pro Platform
- X3 Pro Power Supply
- X3 Pro Software

* When verified using the standard XSENSOR verification process.
**Sampling rate based on using X3 PRO Electronics. Frame rate may vary based on computer configuration.

PRODUCT DESCRIPTION

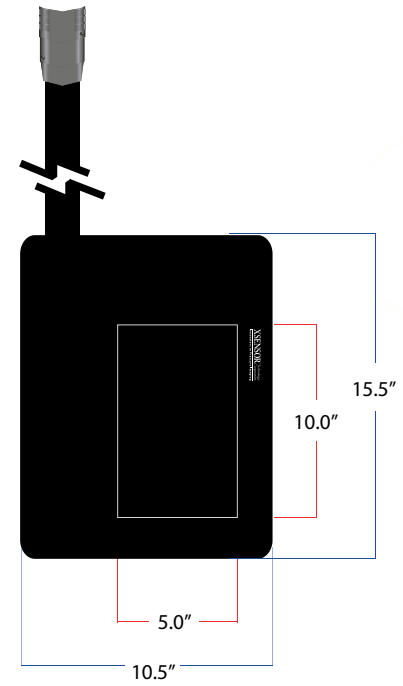
The X3 LX100 series of sensors are designed as a conformable and durable sensor for measuring interface pressures. These capacitive sensors are ideal for assessing automotive and aerospace seat designs and manufacturing quality. The LX100 series of sensors are highly accurate due to high repeatability, low hysteresis, and low creep characteristics. Due to their accuracy, repeatability, and durability they are also used for automated quality control processes.

LX100:25.50.05

SENSING	
Sensor Technology	Capacitive Pressure Imaging
Pressure Range	0.1-3.87psi
	0.07 – 2.7N/cm ²
Spatial Resolution	0.2" 5.08mm
Accuracy	± 5% full scale*
Sampling Frame Rate	40 frames/s**

PHYSICAL CHARACTERISTICS		
Total Area	10.5" x 15.5"	26.7cm x 39.4cm
Sensing Area	5" x 10"	12.7cm x 25.4cm
Thickness <small>(Sensing Area, uncompressed)</small>	0.03"	0.08cm
Thickness <small>(Border – cabling side)</small>	0.07"	0.18cm
Border Width <small>(cabling side)</small>	4"	10.2cm
Border Width <small>(non-cabling side)</small>	1.5"	3.8cm
Cable	43.5" x 2" x 0.16"	110.5cm x 5.1cm x 0.4cm
Connector	4.76" x 2.76" x 0.9"	12.1cm x 7cm x 2.3cm

SENSING	
Ambient Temperature	10°C–40°C
Ambient Humidity	5% to 90% RH



KEY FEATURES

- High-resolution sensors with a 5.08 mm pitch (resolution) and 1,250 sensing points
- Very good repeatability
- Low hysteresis and consistent data throughout long trials
- Designed for higher pressure seating applications such as ingress-egress testing
- Durable sensor that conforms well to surfaces

REQUIREMENTS FOR OPERATION

- X3 Pro Sensor Pack
- X3 Pro Platform
- X3 Pro Power Supply
- X3 Pro Software

* When verified using the standard XSENSOR verification process.

**Sampling rate based on using X3 PRO Electronics. Frame rate may vary based on computer configuration.

PRODUCT DESCRIPTION

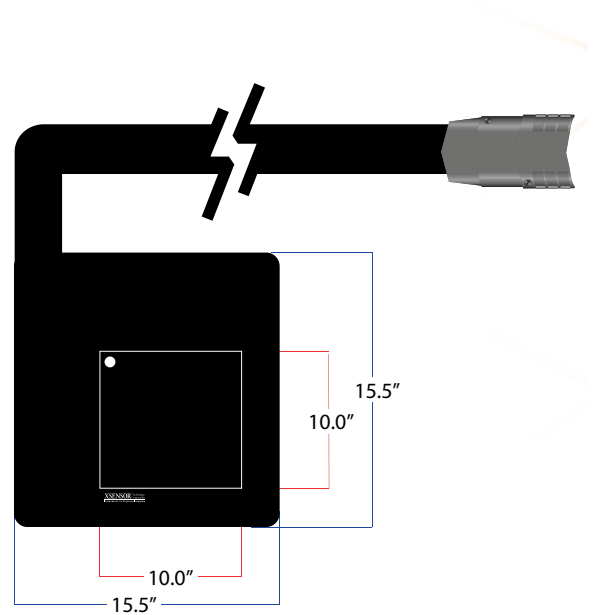
The X3 LX100 series of sensors are designed as a conformable and durable sensor for measuring interface pressures. These capacitive sensors are ideal for assessing automotive and aerospace seat designs and manufacturing quality. The LX100 series of sensors are highly accurate due to high repeatability, low hysteresis, and low creep characteristics. Due to their accuracy, repeatability, and durability they are also used for automated quality control processes.

SENSING	
Sensor Technology	Capacitive Pressure Imaging
Pressure Range	0.1-3.87psi
	0.07 – 2.7N/cm ²
Spatial Resolution	0.2" 5.08mm
Accuracy	± 5% full scale*
Sampling Frame Rate	38 frames/s**

PHYSICAL CHARACTERISTICS		
Total Area	15.5" x 15.5"	39.9cm x 39.9cm
Sensing Area	10" x 10"	25.4cm x 25.4cm
Thickness <small>(Sensing Area, uncompressed)</small>	0.03"	0.09cm
Thickness <small>(Border – cabling side)</small>	0.04"	0.11cm
Border Width <small>(cabling side)</small>	4"	10.2cm
Border Width <small>(non-cabling side)</small>	1.5"	3.8cm
Cable	43.5" x 2" x 0.16"	110.5cm x 5.1cm x 0.4cm
Connector	4.76" x 2.76" x 0.9"	12.1cm x 7cm x 2.3cm

SENSING	
Ambient Temperature	10°C–40°C
Ambient Humidity	5% to 90% RH

LX100:50.50.05



KEY FEATURES

- High-resolution sensors with a 5.08mm pitch (resolution) and 2,500 sensing points
- Very good repeatability
- Low hysteresis and consistent data throughout long trials
- Designed for higher pressure seating applications such as ingress-egress testing
- Durable sensor that conforms well to surfaces

REQUIREMENTS FOR OPERATION

- X3 Pro Sensor Pack
- X3 Pro Platform
- X3 Pro Power Supply
- X3 Pro Software

* When verified using the standard XSENSOR verification process.

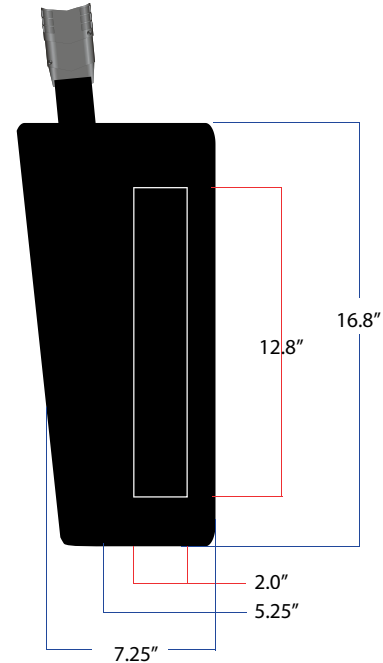
**Sampling rate based on using X3 PRO Electronics. Frame rate may vary based on computer configuration.

PRODUCT DESCRIPTION

The X3 LX100 series of sensors are designed as a conformable and durable sensor for measuring interface pressures. These capacitive sensors are ideal for assessing automotive and aerospace seat designs and manufacturing quality. The LX100 series of sensors are highly accurate due to high repeatability, low hysteresis, and low creep characteristics. Due to their accuracy, repeatability, and durability they are also used for automated quality control processes.

LX100:10.64.05

SENSING	
Sensor Technology	Capacitive Pressure Imaging
Pressure Range	0.1–3.87psi
	0.07–2.7N/cm ²
Spatial Resolution	0.2" 5.08mm
Accuracy	± 5% full scale*
Sampling Frame Rate	60 frames/s**



PHYSICAL CHARACTERISTICS		
Total Area	7.25" x 16.8"	18.4cm x 42.7cm
Sensing Area	2" x 12.8"	5.08cm x 32.5cm
Thickness (Sensing Area, uncompressed)	0.03"	0.08cm
Thickness (Border – cabling side)	0.07"	0.18cm
Border Width (cabling side)	4"	10.2cm
Border Width (non-cabling side)	1.25"	3.2cm
Cable	1.5" x 2" x .07"	3.8cm x 5.1cm x .18cm
Connector	4.76" x 2.76" x 0.9"	12.1cm x 7cm x 2.3cm

KEY FEATURES

- High-resolution sensors with a 5.08 mm pitch (resolution) and 640 sensing points
- Very good repeatability
- Low hysteresis and consistent data throughout long trials
- Designed for higher pressure seating applications such as ingress-egress testing
- Durable sensor that conforms well to surfaces

REQUIREMENTS FOR OPERATION

- X3 Pro Sensor Pack
- X3 Pro Platform
- X3 Pro Power Supply
- X3 Pro Software

* When verified using the standard XSENSOR verification process.

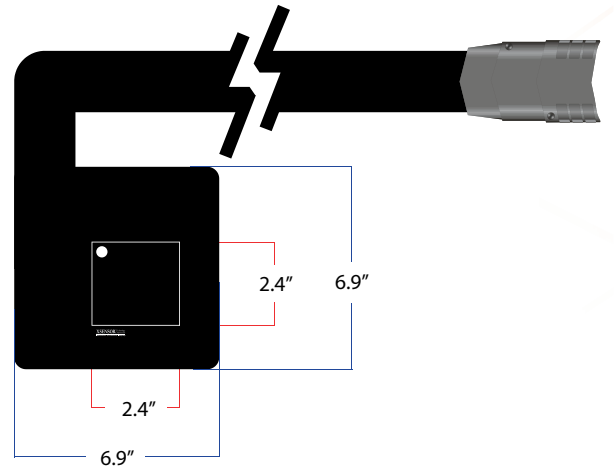
**Sampling rate based on using X3 PRO Electronics. Frame rate may vary based on computer configuration.

SENSING	
Ambient Temperature	10°C–40°C
Ambient Humidity	5% to 90% RH

PRODUCT DESCRIPTION

The X3 LX210 replaces the LX200 series. They are designed as a conformable and durable sensor for measuring interface pressures. These capacitive sensors are ideal for assessing automotive and aerospace ingress-egress, seat design, and manufacturing quality. The LX210 series of sensors are highly accurate due to high repeatability, low hysteresis, and low creep characteristics. Due to their pressure range they have also been used in a variety of research and product testing environments.

LX210:12.12.05



SENSING	
Sensor Technology	Capacitive Pressure Imaging
Pressure Range	0.1-15psi
	0.14–11N/cm ²
Spatial Resolution	0.2" 5.08mm
Accuracy	± 5% full scale*
Sampling Frame Rate	95 frames/s**

PHYSICAL CHARACTERISTICS		
Total Area	6.9" x 6.9"	17.5cm x 17.5cm
Sensing Area	2.4" x 2.4"	6.1cm x 6.1cm
Thickness <small>(Sensing Area, uncompressed)</small>	0.03"	0.09cm
Thickness <small>(Border – cabling side)</small>	0.07"	0.18cm
Border Width <small>(cabling side)</small>	3"	7.7cm
Border Width <small>(non-cabling side)</small>	1.5"	3.8cm
Cable	43.5" x 2" x 0.16"	110.5cm x 5.1cm x 0.4cm
Connector	4.76" x 2.76" x 0.9"	12.1cm x 7cm x 2.3cm

SENSING	
Ambient Temperature	10°C–40°C
Ambient Humidity	5% to 90% RH

KEY FEATURES

- High-resolution sensors with a 5.08 mm pitch (resolution) and 144 sensing points
- Very good repeatability
- Low hysteresis and consistent data
- Designed for comfort and healthcare pressure seating applications
- Durable sensor that conforms well to surfaces with a proven track record

REQUIREMENTS FOR OPERATION

- X3 Pro Sensor Pack
- X3 Pro Platform
- X3 Pro Power Supply
- X3 Pro Software

* When verified using the standard XSENSOR verification process.
**Sampling rate based on using X3 PRO Electronics. Frame rate may vary based on computer configuration.

PRODUCT DESCRIPTION

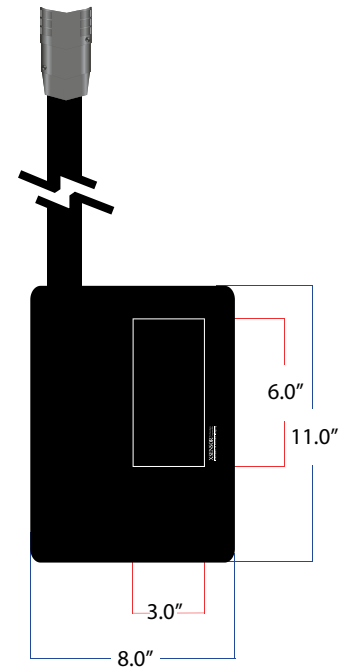
The X3 LX210 replaces the LX200 series. They are designed as a conformable and durable sensor for measuring interface pressures. These capacitive sensors are ideal for assessing automotive and aerospace ingress-egress, seat design, and manufacturing quality. The LX210 series of sensors are highly accurate due to high repeatability, low hysteresis, and low creep characteristics. Due to their pressure range they have also been used in a variety of research and product testing environments.

LX210:15.30.05

SENSING	
Sensor Technology	Capacitive Pressure Imaging
Pressure Range	0.1-15psi
	0.14–11N/cm ²
Spatial Resolution	0.2" 5.08mm
Accuracy	± 5% full scale*
Sampling Frame Rate	95 frames/s**

PHYSICAL CHARACTERISTICS		
Total Area	8" x 11"	20.3cm x 27.9cm
Sensing Area	3" x 6"	7.6cm x 15.2cm
Thickness <small>(Sensing Area, uncompressed)</small>	0.03"	0.09cm
Thickness <small>(Border – cabling side)</small>	0.07"	0.18cm
Border Width <small>(cabling side)</small>	3.5"	8.9cm
Border Width <small>(non-cabling side)</small>	1.5"	3.8cm
Cable	43.5" x 2" x 0.16"	110.5cm x 5.1cm x 0.4cm
Connector	4.76" x 2.76" x 0.09"	12.1cm x 7cm x 0.2cm

SENSING	
Ambient Temperature	10°C–40°C
Ambient Humidity	5% to 90% RH



KEY FEATURES

- High-resolution sensors with a 5.08 mm pitch (resolution) and 450 sensing points
- Very good repeatability
- Low hysteresis and consistent data
- Designed for comfort and healthcare pressure seating applications
- Durable sensor that conforms well to surfaces with a proven track record

REQUIREMENTS FOR OPERATION

- X3 Pro Sensor Pack
- X3 Pro Platform
- X3 Pro Power Supply
- X3 Pro Software

* When verified using the standard XSENSOR verification process.

**Sampling rate based on using X3 PRO Electronics. Frame rate may vary based on computer configuration.

PRODUCT DESCRIPTION

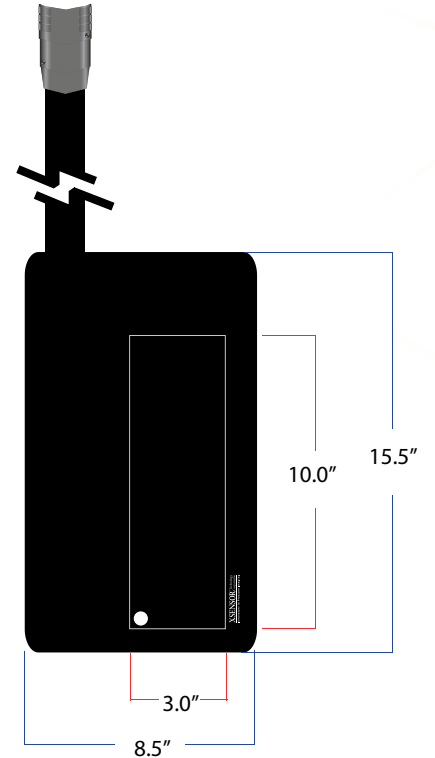
The X3 LX210 replaces the LX200 series. They are designed as a conformable and durable sensor for measuring interface pressures. These capacitive sensors are ideal for assessing automotive and aerospace ingress-egress, seat design, and manufacturing quality. The LX210 series of sensors are highly accurate due to high repeatability, low hysteresis, and low creep characteristics. Due to their pressure range they have also been used in a variety of research and product testing environments.

LX210:15.50.05

SENSING	
Sensor Technology	Capacitive Pressure Imaging
Pressure Range	0.1-15psi
	0.14-11N/cm ²
Spatial Resolution	0.2" 5.08mm
Accuracy	± 5% full scale*
Sampling Frame Rate	95 frames/s**

PHYSICAL CHARACTERISTICS		
Total Area	8.5" x 15.5"	21.6cm x 39.4cm
Sensing Area	3" x 10"	7.6cm x 25.4cm
Thickness <small>(Sensing Area, uncompressed)</small>	0.03"	0.09cm
Thickness <small>(Border – cabling side)</small>	0.07"	0.18cm
Border Width <small>(cabling side)</small>	4"	10.2cm
Border Width <small>(non-cabling side)</small>	1.5"	3.8cm
Cable	43.5" x 2" x 0.16"	110.5cm x 5.1cm x 0.4cm
Connector	4.76" x 2.76" x 0.09"	12.1cm x 7cm x 2.3cm

SENSING	
Ambient Temperature	10°C–40°C
Ambient Humidity	5% to 90% RH



KEY FEATURES

- High-resolution sensors with a 5.08 mm pitch (resolution) and 750 sensing points
- Very good repeatability
- Low hysteresis and consistent data
- Designed for comfort and healthcare pressure seating applications
- Durable sensor that conforms well to surfaces with a proven track record

REQUIREMENTS FOR OPERATION

- X3 Pro Sensor Pack
- X3 Pro Platform
- X3 Pro Power Supply
- X3 Pro Software

* When verified using the standard XSENSOR verification process.

**Sampling rate based on using X3 PRO Electronics. Frame rate may vary based on computer configuration.

PRODUCT DESCRIPTION

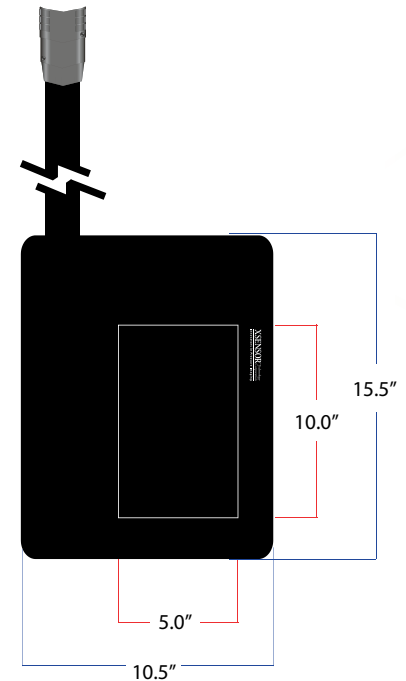
The X3 LX210 replaces the LX200 series. They are designed as a conformable and durable sensor for measuring interface pressures. These capacitive sensors are ideal for assessing automotive and aerospace ingress-egress, seat design, and manufacturing quality. The LX210 series of sensors are highly accurate due to high repeatability, low hysteresis, and low creep characteristics. Due to their pressure range they have also been used in a variety of research and product testing environments.

SENSING	
Sensor Technology	Capacitive Pressure Imaging
Pressure Range	0.1-15psi
	0.14-11N/cm ²
Spatial Resolution	0.2" 5.08mm
Accuracy	± 5% full scale*
Sampling Frame Rate	40 frames/s**

PHYSICAL CHARACTERISTICS		
Total Area	10.5" x 15.5"	26.7cm x 39.4cm
Sensing Area	5" x 10"	12.7cm x 25.4cm
Thickness <small>(Sensing Area, uncompressed)</small>	0.03"	0.09cm
Thickness <small>(Border - cabling side)</small>	0.07"	0.18cm
Border Width <small>(cabling side)</small>	4"	10.2cm
Border Width <small>(non-cabling side)</small>	1.5"	3.8cm
Cable	43.5" x 2" x 0.16"	110.5cm x 5.1cm x 0.4cm
Connector	4.76" x 2.76" x 0.09"	12.1cm x 7cm x 2.3cm

SENSING	
Ambient Temperature	10°C-40°C
Ambient Humidity	5% to 90% RH

LX210:25.50.05



KEY FEATURES

- High-resolution sensors with a 5.08 mm pitch (resolution) and 1,250 sensing points
- Very good repeatability
- Low hysteresis and consistent data
- Designed for comfort and healthcare pressure seating applications
- Durable sensor that conforms well to surfaces with a proven track record

REQUIREMENTS FOR OPERATION

- X3 Pro Sensor Pack
- X3 Pro Platform
- X3 Pro Power Supply
- X3 Pro Software

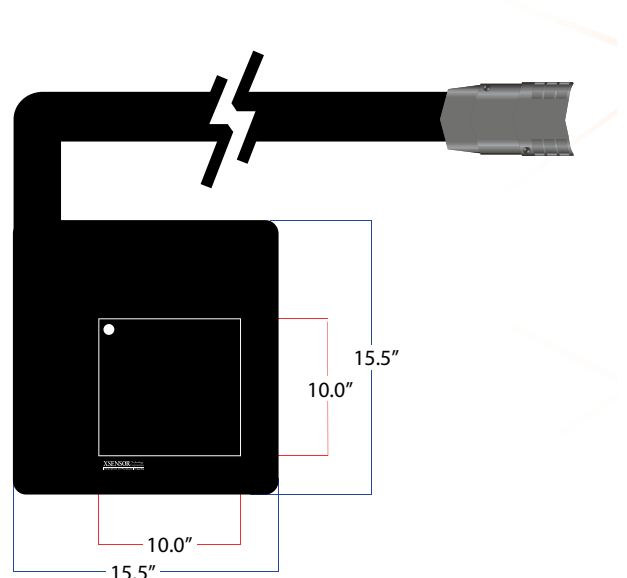
* When verified using the standard XSENSOR verification process.

**Sampling rate based on using X3 PRO Electronics. Frame rate may vary based on computer configuration.

PRODUCT DESCRIPTION

The X3 LX210 replaces the LX200 series. They are designed as a conformable and durable sensor for measuring interface pressures. These capacitive sensors are ideal for assessing automotive and aerospace ingress-egress, seat design, and manufacturing quality. The LX210 series of sensors are highly accurate due to high repeatability, low hysteresis, and low creep characteristics. Due to their pressure range they have also been used in a variety of research and product testing environments.

LX210:50.50.05



SENSING	
Sensor Technology	Capacitive Pressure Imaging
Pressure Range	0.1-15psi
	0.14-11N/cm ²
Spatial Resolution	0.2" 5.08mm
Accuracy	± 5% full scale*
Sampling Frame Rate	35 frames/s**

PHYSICAL CHARACTERISTICS		
Total Area	15.5" x 15.5"	39.9cm x 39.9cm
Sensing Area	10" x 10"	25.4 x 25.4cm
Thickness <small>(Sensing Area, uncompressed)</small>	0.03"	0.09cm
Thickness <small>(Border – cabling side)</small>	0.04"	0.11cm
Border Width <small>(cabling side)</small>	4"	10.2cm
Border Width <small>(non-cabling side)</small>	1.5"	3.8cm
Cable	43.5" x 2" x 0.16"	110.5cm x 5.1cm x 0.4cm
Connector	4.76" x 2.76" x 0.09"	12.1cm x 7cm x 2.3cm

SENSING	
Ambient Temperature	10°C-40°C
Ambient Humidity	5% to 90% RH

KEY FEATURES

- High-resolution sensors with a 5.08 mm pitch (resolution) and 2,500 sensing points
- Very good repeatability
- Low hysteresis and consistent data
- Designed for comfort and healthcare pressure seating applications
- Durable sensor that conforms well to surfaces with a proven track record

REQUIREMENTS FOR OPERATION

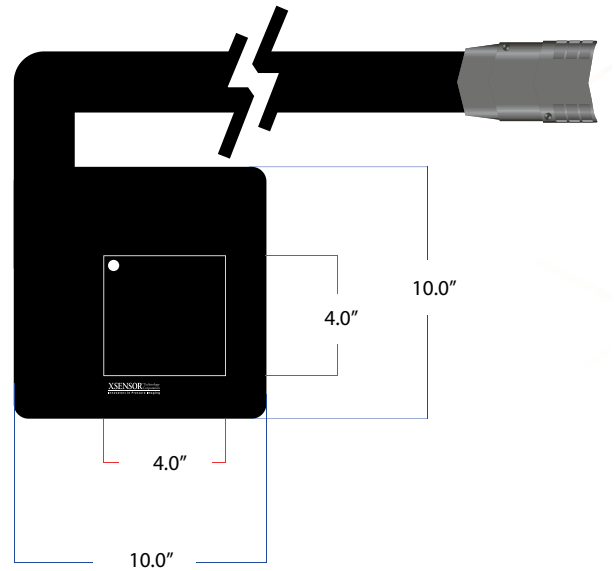
- X3 Pro Sensor Pack
- X3 Pro Platform
- X3 Pro Power Supply
- X3 Pro Software

* When verified using the standard XSENSOR verification process.
**Sampling rate based on using X3 PRO Electronics. Frame rate may vary based on computer configuration.

PRODUCT DESCRIPTION

The LX205:40.40.10 is a mid-range pressure sensor with over 1,600 sensing points. The sensor can be used for measuring hand pressures on surfaces, automated clamping pressures, seal pressures, and for higher pressure research or design testing. The LX205:40.40.10 is a thin and conformable sensor that can fit into tight spaces and can be used on uneven surfaces. Additionally, the sensor provides a very fast data acquisition rate for capturing rapid movements.

LX205:40.40.10



SENSING	
Sensor Technology	Capacitive Pressure Imaging
Pressure Range	0.2-15psi
	0.14-10.3N/cm ²
Spatial Resolution	0.1" 2.54mm
Accuracy	± 10% full scale*
Sampling Frame Rate	39 frames/s**

PHYSICAL CHARACTERISTICS		
Total Area	10" x 10"	24.8cm x 24.8cm
Sensing Area	4" x 4"	10.2cm x 10.2cm
Thickness <small>(Sensing Area, uncompressed)</small>	0.035"	0.09cm
Thickness <small>(Border – cabling side)</small>	0.08"	0.11cm
Border Width <small>(cabling side)</small>	4"	10.2cm
Border Width <small>(non-cabling side)</small>	2"	5.1cm
Cable	31.5" x 2" x 0.16"	80cm x 5.1cm x 0.4cm
Connector	4.76" x 2.76" x 0.9"	12.1cm x 7cm x 2.3cm

SENSING	
Ambient Temperature	10°C–40°C
Ambient Humidity	5% to 90% RH

KEY FEATURES

- High-resolution sensors with a 2.54 mm pitch (resolution) and 1,600 sensing points
- Designed for high-quality pressure images with fast data acquisition
- Excellent for both lab and environmental testing
- Conformable sensor that can measure pressures on uneven surfaces

REQUIREMENTS FOR OPERATION

- X3 Pro Sensor Pack
- X3 Pro Platform
- X3 Pro Power Supply
- X3 Pro Software

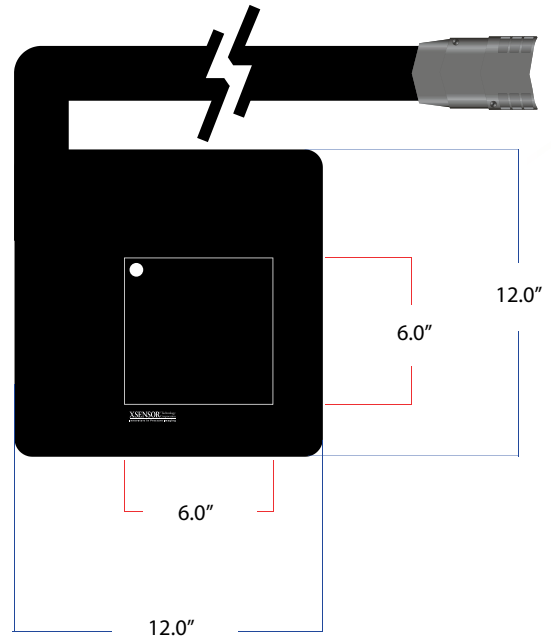
* When verified using the standard XSENSOR verification process.

**Sampling rate based on using X3 PRO Electronics. Frame rate may vary based on computer configuration.

PRODUCT DESCRIPTION

The LX205:60.60.10 is a mid-range pressure sensor with 3,600 sensing points. The sensor can be used for measuring hand pressures on surfaces, automated clamping pressures, seal pressures, and for higher pressure research or design testing. The LX205:60.60.10 is a thin and conformable sensor that can fit into tight spaces and can be used on uneven surfaces. Additionally, the sensor provides a very fast data acquisition rate for capturing rapid movements.

LX205:60.60.10



SENSING	
Sensor Technology	Capacitive Pressure Imaging
Pressure Range	0.2-15psi
	0.14-10.3N/cm ²
Spatial Resolution	0.1" 2.54mm
Accuracy	± 10% full scale*
Sampling Frame Rate	30 frames/s**

PHYSICAL CHARACTERISTICS		
Total Area	12" x 12"	30.5cm x 30.5cm
Sensing Area	6" x 6"	15.2cm x 15.2cm
Thickness <small>(Sensing Area, uncompressed)</small>	0.035"	0.09cm
Thickness <small>(Border - cabling side)</small>	0.08"	0.11cm
Border Width <small>(cabling side)</small>	4"	10.2cm
Border Width <small>(non-cabling side)</small>	2"	5.1cm
Cable	31.5" x 2" x 0.16"	80cm x 5.1cm x 0.4cm
Connector	4.76" x 2.76" x 0.9"	12.1cm x 7cm x 2.3cm

SENSING	
Ambient Temperature	10°C–40°C
Ambient Humidity	5% to 90% RH

KEY FEATURES

- High-resolution sensors with a 2.54 mm pitch (resolution) and 3,600 sensing points
- Designed for high-quality pressure images with fast data acquisition
- Excellent for both lab and environmental testing
- Conformable sensor that can measure pressures on uneven surfaces

REQUIREMENTS FOR OPERATION

- X3 Pro Sensor Pack
- X3 Pro Platform
- X3 Pro Power Supply
- X3 Pro Software

* When verified using the standard XSENSOR verification process.
**Sampling rate based on using X3 PRO Electronics. Frame rate may vary based on computer configuration.

PRODUCT DESCRIPTION

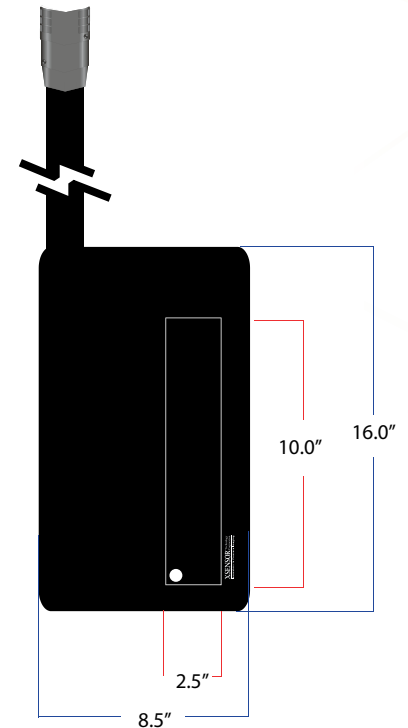
The LX205.100.10 sensor is small, narrow, high resolution sensor. The sensor has been used for assessing applied pressures from fingers, robotic hands, and other low pressure applications. Due to the resolution and the pressure range, the sensor can detect small changes in pressures and provides very clear images.

SENSING	
Sensor Technology	Capacitive Pressure Imaging
Pressure Range	0.2-15psi
	0.14-10.3N/cm ²
Spatial Resolution	0.1" 2.54mm
Accuracy	± 10% full scale*
Sampling Frame Rate	37 frames/s**

PHYSICAL CHARACTERISTICS		
Total Area	8.5" x 16"	21.75cm x 40.7cm
Sensing Area	2.5" x 10"	6.45cm x 25.4cm
Thickness <small>(Sensing Area, uncompressed)</small>	0.035"	0.09cm
Thickness <small>(Border – cabling side)</small>	0.1"	0.25cm
Border Width <small>(cabling side)</small>	4"	10.2cm
Border Width <small>(non-cabling side)</small>	2"	5.1cm
Cable	31.5" x 2" x 0.27"	80cm x 5.1cm x 0.7cm
Connector	4.76" x 2.76" x 0.9"	12.1cm x 7.0cm x 2.3cm

SENSING	
Ambient Temperature	10°C–40°C
Ambient Humidity	5% to 90% RH

LX205:25.100.10



KEY FEATURES

- High-resolution sensors with a 2.54 mm pitch (resolution) and 2,500 sensing points
- Designed for high-quality pressure images with exceptional detail
- Excellent for both lab and environmental testing
- Has been used to measure finger pressures

REQUIREMENTS FOR OPERATION

- X3 Pro Sensor Pack
- X3 Pro Platform
- X3 Pro Power Supply
- X3 Pro Software

* When verified using the standard XSENSOR verification process.

**Sampling rate based on using X3 PRO Electronics. Frame rate may vary based on computer configuration.

PRODUCT DESCRIPTION

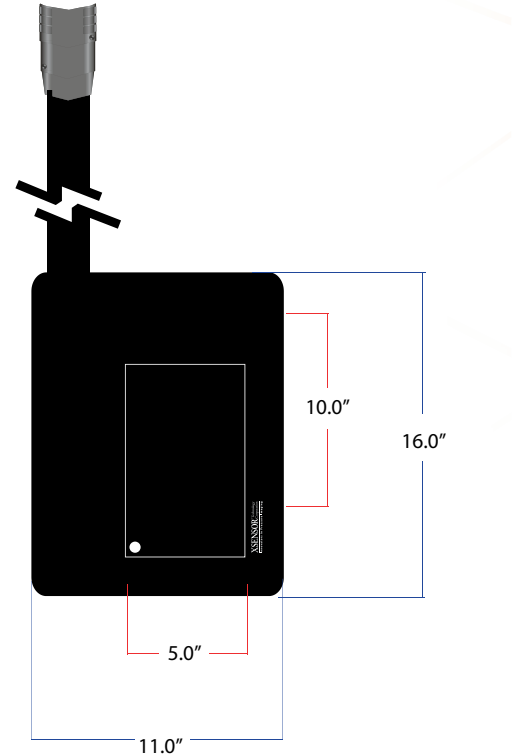
The LX205 series of sensors are designed as a conformable and durable sensor for measuring interface pressures. These capacitive sensors were initially designed for medical applications in rehabilitation seating and have since been more widely used in automotive seating, aerospace, research, and product design.

LX205:50.100.10

SENSING	
Sensor Technology	Capacitive Pressure Imaging
Pressure Range	0.2-15 psi
	0.14-10.3N/cm ²
Spatial Resolution	0.1" 2.54mm
Accuracy	± 10% full scale*
Sampling Frame Rate	36 frames/s**

PHYSICAL CHARACTERISTICS		
Total Area	11" x 16"	28cm x 40.7cm
Sensing Area	5" x 10"	12.7cm x 25.4cm
Thickness <small>(Sensing Area, uncompressed)</small>	0.035"	0.09cm
Thickness <small>(Border – cabling side)</small>	0.04"	0.11cm
Border Width <small>(cabling side)</small>	4"	10.2cm
Border Width <small>(non-cabling side)</small>	2"	5.1cm
Cable	31.5" x 2" x 0.27"	80cm x 5.1cm x 0.7cm
Connector	4.76" x 2.76" x 0.9"	12.1cm x 7cm x 2.3cm

SENSING	
Ambient Temperature	10°C–40°C
Ambient Humidity	5% to 90% RH



KEY FEATURES

- High-resolution sensors with a 2.54 mm pitch (resolution) and 5,000 sensing points
- Designed for high-quality pressure images with exceptional detail
- Excellent for both lab and environmental testing

REQUIREMENTS FOR OPERATION

- X3 Pro Sensor Pack
- X3 Pro Platform
- X3 Pro Power Supply
- X3 Pro Software

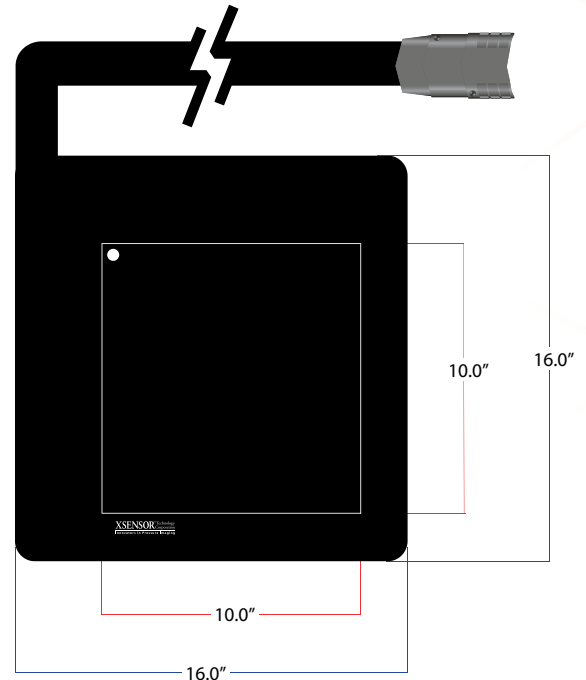
* When verified using the standard XSENSOR verification process.

**Sampling rate based on using X3 PRO Electronics. Frame rate may vary based on computer configuration.

PRODUCT DESCRIPTION

The LX205 series of sensors are designed as a conformable and durable sensor for measuring interface pressures. As capacitive sensors were initially designed for medical applications in rehabilitation seating and have since been more widely used in automotive seating, aerospace, research, and product design.

LX205:100.100.10



SENSING	
Sensor Technology	Capacitive Pressure Imaging
Pressure Range	0.2-15psi
	0.14-10.3N/cm ²
Spatial Resolution	0.1" 2.54mm
Accuracy	± 10% full scale*
Sampling Frame Rate	14 frames/s**

PHYSICAL CHARACTERISTICS		
Total Area	16" x 16"	40.7cm x 40.7cm
Sensing Area	10" x 10"	25.4cm x 25.4cm
Thickness (Sensing Area, uncompressed)	0.035"	0.09cm
Thickness (Border – cabling side)	0.04"	0.11cm
Border Width (cabling side)	4"	10.2cm
Border Width (non-cabling side)	2"	5.1cm
Cable	31.5" x 2" x 0.3"	80cm x 5.1cm x 0.76cm
Connector	4.76" x 2.76" x 0.9"	12.1cm x 7cm x 2.3cm

KEY FEATURES

- High-resolution sensors with a 2.54 mm pitch (resolution) and 10,000 sensing points
- Designed for high-quality pressure images with exceptional detail
- Excellent for both lab and environmental testing

REQUIREMENTS FOR OPERATION

- X3 Pro Sensor Pack
- X3 Pro Platform
- X3 Pro Power Supply
- X3 Pro Software

* When verified using the standard XSENSOR verification process.

**Sampling rate based on using X3 PRO Electronics. Frame rate may vary based on computer configuration.

SENSING	
Ambient Temperature	10°C–40°C
Ambient Humidity	5% to 90% RH

SOFTWARE

PRODUCT DESCRIPTION

The PRO V8 Software is an essential part of the PRO V8 product series. Developed with the power user in mind, the PRO V8 Software features a faster, more powerful engine with enhanced analytical tools. The software package offers 2D, 3D, and graphing view options. The data is viewed dynamically and recorded as a XSENSOR file format. Recorded data can be exported for further analysis or imported into other applications such as Matlab.

The PRO V8 software has many analytical tools for general research purposes as well as specific functions and tools for automotive and tire designers. Easily stream video along pressure images, create sensor groupings, make measurements, and compare multiple files.

PRO – SOFTWARE FEATURES

Engine Performance Improvements

- Collected data is saved immediately to the disk, thereby reducing the risk of data loss
- Over 100% faster frame rate for a 4 sensor pack system with 65,536 sensing points
- Load or save up to 500GB files in under 1 second
- Allows for sessions with up to 100 million frames or 500GB of data

File Comparison Tools

- Simultaneous playback of up to 4 files
- Multiple frame and file comparisons
- Windshield wiper sensor users can graph multiple files for product and data comparisons

Measurement Tools

- Line measurement allows users to measure pressure image dimensions
- Area measurement allows users to calculate areas within a pressure image

Imaging Tools

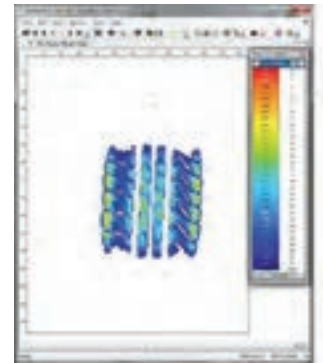
- Thumbnail preview strip displays each frame in filmstrip format
- Thumbnail view includes preview of attached videos, photos, and notes
- Improved overall frame navigation
- Improved 2D zoom functionality

Export/Analysis Tools

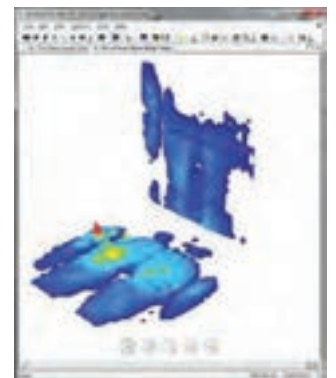
- Copy, paste and select pressure values from 2D image directly into spreadsheet
- Export a sensor group in its original shape directly into a spreadsheet
- Copy and paste cross-section values into spreadsheets (cross-hair or average)
- Export files into html-viewable format

* Dual core processor computer required. Also dependent on sensor configuration.

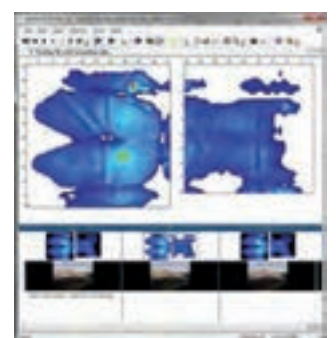
PRO V8 Software



2D Car Tire
(IX500:256.256.22)



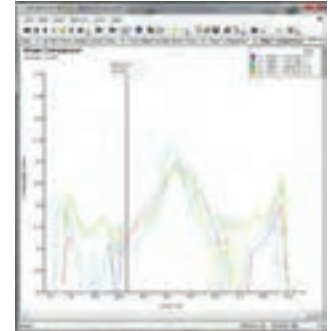
3D Car Seat
(LX100:48.48.02)



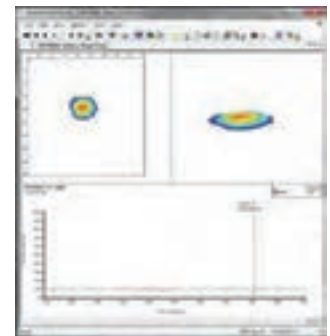
Video Streaming Car Seat
(PX100:40.40.02 & PX100:36.36.02)

PRO V8 Software

FEATURES	
X3 Connection Status	View the connection status of all sensors, sensor packs, and electronics* connected to your computer. Toggle the view mode to see sensor usage statistics, such as when the sensor was last calibrated and the length of time the sensor has recorded data.
Dynamic Preview Mode	View live, dynamic data before recording to ensure relevant information is captured.
Record Live Pressure Imaging Sessions	Capture and record pressure imaging data for analysis and review.
Time and Recording Triggers	Set recording session delays and triggers to capture specific data.
Pressure Movie Creation	Generate movie files in XSENSOR software to share dynamic sessions with those who do not have XSENSOR software.
Video Sync	Record and synchronize digital video (DV) cameras, using IEEE 1394 FireWire or USB webcams to XSENSOR pressure imaging files.



2D Wiper Blade Comparison (PX100:1.64.02)



Air Pressure on Sensor (PX100:36.36.02)

VIEWS	
Each XSENSOR view mode has multiple settings and options to control sensor data viewing:	
2D	Top view of the sensor shows pressure levels in different colours defined by the pressure isobar legend; view can be rotated or flipped to match positioning.
3D	Perspective view of the sensor shows pressure levels in different colours and height contours; rotate view in any direction to maximize visual clarity.
Frame Compare	Show up to 4 snapshots side-by-side for easy comparison.
Pressure vs. Time	Graph pressure readings over time; pressure reading can be either peak or average for the sensor.
Numeric Mode	2D mode shows numerical pressure readings in each sensing cell and dynamic full-colour display.

XSENSOR[®] Pro V8 PRESSURE IMAGING SOFTWARE

The most powerful pressure imaging software just got better. Introducing ProV8.

XSENSOR's Pro software has been the industry leader for pressure testing and measurement for years. Pro software provides a dynamic way for design and test engineers to gather pressure data in high resolution and process the information for comparisons and calculations. It's ease-of-use, stability and data integrity makes it the go-to tool for automotive and performance engineers working in a wide range of applications.

Pro software features include:

- Record live, real-time interface pressures
- View pressure images in 2d and 3d
- Stream video
- Analyze, review, and export pressure data:
 - Select frames and sensor groups within recordings
 - Compare frames
 - Analyze peaks/averages
- Advanced toolsets for tire/seating/wiper design

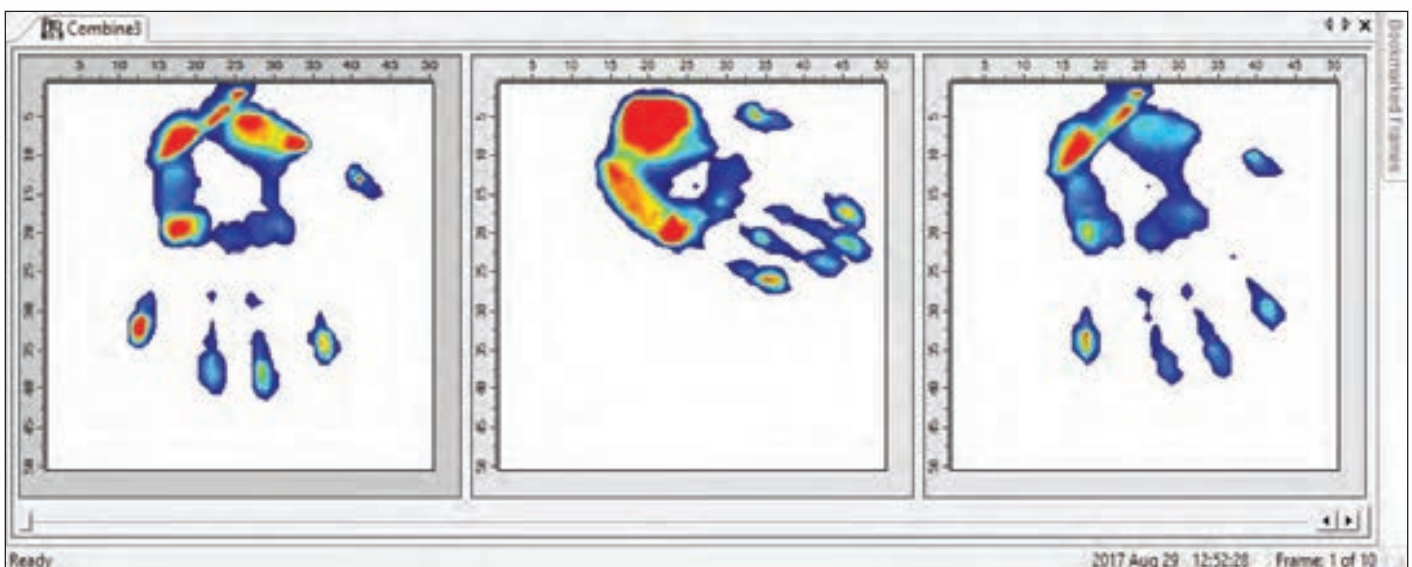
WHAT'S NEW IN VERSION 8?

BATCH EXPORT OF RAW OR CALIBRATED FILES

With the release of ProV8, engineers can now record sessions in RAW mode and then apply a calibration file to one, or more recorded files at the same time. So, no matter where the session is recorded, a single calibration file can be applied to all of the data.

MERGE RECORDINGS FROM DIFFERENT SENSORS

Sessions can now be merged using sensors of different shapes and sizes and data can be appended or combined into a single continuous file. You can now combine the data from up to eight sensors and have the ability to show them all running simultaneously, side-by-side, within one window.



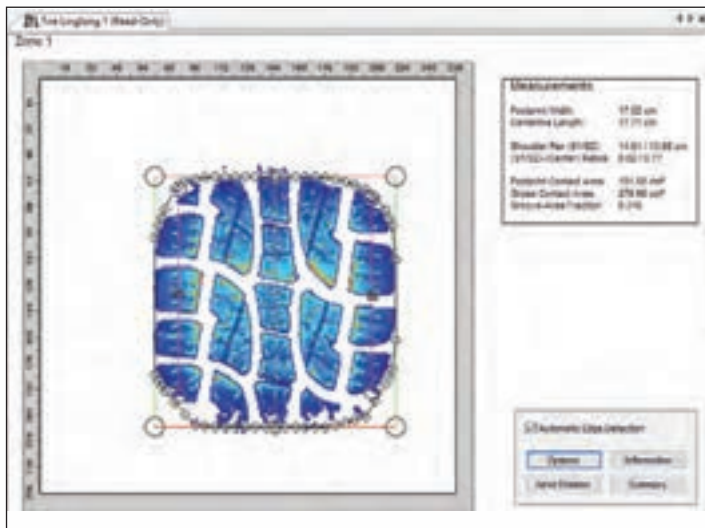
XSENSOR® Pro V8 PRESSURE IMAGING SOFTWARE

MORE CONTROL OF DATA EXPORTS

Powerful improvements in export controls make working with large data sets simple. Users can export only the data that is needed for analysis. And with ProV8, a frame, or series of frames can now be exported at intervals determined by the user, with a wider selection of export formats including .xsensor, .csv, and more.

NEW TIRE DESIGN FEATURES

A new feature of ProV8 is especially beneficial to tire designers who are now better able to measure contact areas and determine how edges of the tire contact patch will be rendered. And the ability to export an .svg file means that pressure images can be printed to scale.



IMPROVED GRAPHICS

Pro software provides a visually rich environment for viewing and assessing data. With ProV8, sensor margins are more clearly defined, making it easier to focus on areas of interest. Improvements to measurement tools, zoom functionality and sensor positioning makes it easier than ever to see what needs to be seen, and measure what needs to be measured.

New Features and Enhancements

Merge Sessions

- Allows the combining of separate session files. Useful for side-by-side data analysis

Export Sessions

- Scalable Vector Graphics (SVG) 2D export which allows full scale printing via third-party support
- New frame selection methods for exporting frames including regular intervals and frame averaging
- Sensors can be reordered during export
- Bookmarked Frames allows users to highlight frames of interest for quick navigation and export

User Interface Enhancements

- Sensor Group center of pressure indicators
- Size of "Center of Pressure Indicator" now adjustable
- 2D sensor margins with sensel counts or length units
- Optional manual placement of the sensors in 2D and 3D
- Improved sensel magnification in 2D
- 2D/3D contouring using b-cubic magnification for smoother rendering

Other

- Raw sessions can be converted to calibrated sessions
- Video capture from two web cameras
- Improved playback performance
- Improved time stamp accuracy
- Recording rate can be modified for existing sessions
- XSNReader DLL allows direct access to XSN files via a C programming interface

ELECTRONICS

X3 PRO Platform



X3 PRO Sensor Pack



PRODUCT DESCRIPTION

The **X3 PRO** Platform provides four data ports, control signals, communication relay functionality, electrical isolation and power for the sensor system.

FEATURES

Display Functionality	LED: green-power on, amber-malfunfunction
Sensor Cell Capacity	256x256
Sensor Ports	4

POWER

External Power Supply	Input: 100-240 VAC, 47-63Hz, 1.35 A Output: 12 VDC, 3.75 A
Power Consumption	1 W

PHYSICAL CHARACTERISTICS

Length	4.5"	11.4cm
Width	3.5"	8.9cm
Height	0.9"	2.3cm
Weight	4.8oz	135g

ENVIRONMENT

Operating Range (Temp.)	10°C to 40°C
Ambient Humidity	80% for temperatures up to 31°C and decreasing linearly to 50% at 40°C

USB Port

USB Input	USB 2.0, Full Speed
USB Cable (sold separate)	185cm length

PRODUCT DESCRIPTION

The **X3 PRO** Sensor Pack contains the sensing electronics of the system including one communication port.

FEATURES

Display Functionality	LED: green-power on, amber-malfunfunction
Sensor Cell Capacity	64x64
Sampling Rate	112,000 sensels/sec
Sampling Resolution	16 bit
Min Cell Measurement Time	35 µsec

POWER

Power Consumption	2 W
--------------------------	-----

PHYSICAL CHARACTERISTICS

Length	3.9"	9.8cm
Width	2.5"	6.4cm
Height	0.7"	1.8cm
Weight	6.3oz	180g
Cable Length	78"	198.1cm

ENVIRONMENT

Operating Range (Temp.)	10°C to 40°C
Ambient Humidity	80% for temperatures up to 31°C and decreasing linearly to 50% at 40°C

X3 Node



PRODUCT DESCRIPTION

The **X3 NODE** provides three additional data ports, control signals, communication relay functionality, electrical isolation and power for the sensor system. An X3 NODE is connected to a port on the X3 PRO Electronics Platform to expand the number of sensor connections.

FEATURES

Sensor Cell Capacity	192x192
Sensor Ports	3

POWER

Power Consumption	100 mW
-------------------	--------

PHYSICAL CHARACTERISTICS

Length	2.3"	5.7cm
Width	3.5"	6.4cm
Height	0.7"	1.8cm
Weight	3.0oz	85g
Cable Length	9.4"	24cm

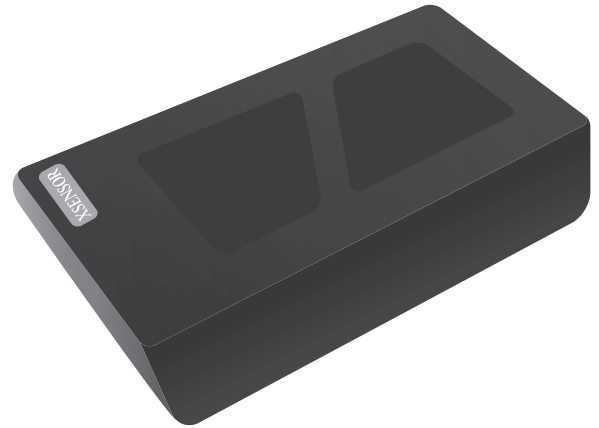
ENVIRONMENT

Operating Range (Temp.)	10°C to 40°C
Ambient Humidity	80% for temperatures up to 31C and decreasing linearly to 50% at 40°C

X3 Power Supply



X3 Battery Pack



PRODUCT DESCRIPTION

The **X3 Power Supply** is a certified power supply that is sold with country specific power cords.

POWER

External Power Supply	Input: 100-240 VAC, 47-63 Hz, 1.35 A Output: 12 VDC, 3.75 A	
Maximum Output Power	45 W	

PHYSICAL CHARACTERISTICS

Length	5.7"	14.5cm
Width	3.0"	7.6cm
Height	1.7"	4.3cm
Weight	16.6oz	470g
Cable Length – Power Supply	78.7"	200cm
Cable Length – Power Cord	82.7"	210cm

ENVIRONMENT

Operating Range (Temp.)	10°C to 40°C	
Ambient Humidity	80% for temperatures up to 31°C and decreasing linearly to 50% at 40°C	

PRODUCT DESCRIPTION

The **X3 Battery Pack** contains a Lithium-ion Battery and a carry case. The battery is connected from the carry case into the X3 PRO Platform Electronics.

FEATURES

Battery	Lithium-ion Battery
Recharger	External Lithium-ion Recharger
Run Time	5 hours

BATTERY POWER

Capacity	13,200 mAh	
----------	------------	--

PHYSICAL CHARACTERISTICS OF BATTERY CASE

Length	3.5"	8.9cm
Width	2.5"	6.4cm
Height	2.1"	5.3cm
Weight	13oz	370g
Cable Length	30"	76cm

Electrical Characteristics

Output Voltage	11.1V
Charge Voltage	12.6V
Cutoff Voltage	9V
Maximum Output Current	2.0A

X3 Carry Case – Soft shell



X3 Carry Case – Hard shell



PRODUCT DESCRIPTION

The **X3 Carry Case - Soft** is the standard carry case which comes with most systems. The case is designed to carry a rolled sensor and all the corresponding X3 PRO Electronics, X3 PRO Software CD, and User Guide.

PHYSICAL CHARACTERISTICS

Length	33"	83.8cm
Width	6"	15.2cm
Height	8"	20.3cm
Weight	24oz	680g

PRODUCT DESCRIPTION

The **X3 Carry Case - Hard** is an optional carry case designed for durability. It is primarily used by engineers who require a portable and durable carry case for travel purposes.

PHYSICAL CHARACTERISTICS

Length	33 1/2"	85cm
Width	6 1/2"	16.5cm
Height	8"	20.3cm
Weight	120oz	3,400g

X3 Carry Case – IX500:256:256:22



X3 Carry Case – IX500:256:256:16



PRODUCT DESCRIPTION

The **X3 Carry Case – Tire Sensors (IX500:256.256.22)**
The IX500:256.256.22 Tire Sensor Carry Case is fitted to the dimensions of this specific sensor. The case also has compartments for each of the X3 PRO Electronic components and software CD.

PHYSICAL CHARACTERISTICS

Length	27"	68.6cm
Width	3"	7.6cm
Height	23"	58.4cm
Weight	48oz	1,360g

PRODUCT DESCRIPTION

The **X3 Carry Case – Tire Sensors (IX500:256.256.16)**
The IX500:256.256.16 Tire Sensor Carry Case is fitted to the dimensions of this specific sensor. The case also has compartments for each of the X3 PRO Electronic components and software CD.

PHYSICAL CHARACTERISTICS

Length	33"	83.8cm
Width	3"	7.6cm
Height	27"	68.6cm
Weight	56oz	1,587g

XSENSOR Technology Corporation
1-866-927-5222(NORTH AMERICA)

TEL +1-403-266-6612

FAX +1-403-205-4013

SALES@XSENSOR.COM

133 12 Ave SE

CALGARY, AB T2G 0Z9 CANADA

WWW.XSENSOR.COM

XSENSOR[®]Technology
Corporation

DOC-03-00020-01
October 2018