

LOAD CELL CHARACTERISTICS

#	CAPACITY	US CAPACITES	SI CAPACITES
		2500	10 KN
①	MOUNTING THREAD, BOTH ENDS	.625-18 UNF-2B	M16 X 2-6H

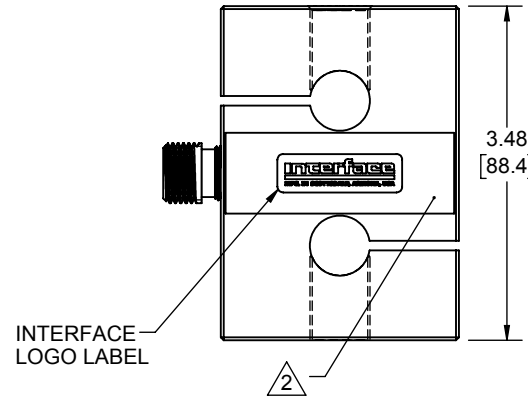
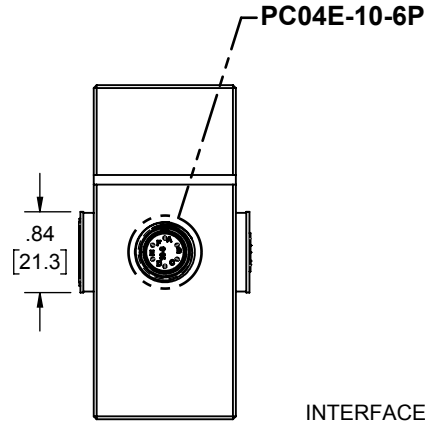
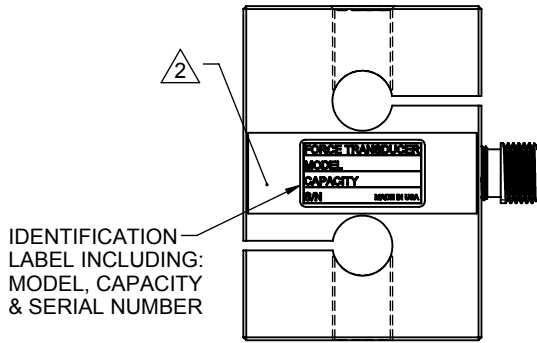
Interface Inc. claims proprietary rights in the information disclosed herein. This drawing is furnished in confidence on the express understanding that neither it nor any reproduction thereof will be disclosed to others or used for the purpose of manufacture or procurement of the article or part shown herein without written permission of Interface Inc. The drawing shall remain the property of Interface Inc. and shall be returned upon request by Interface Inc.

81811

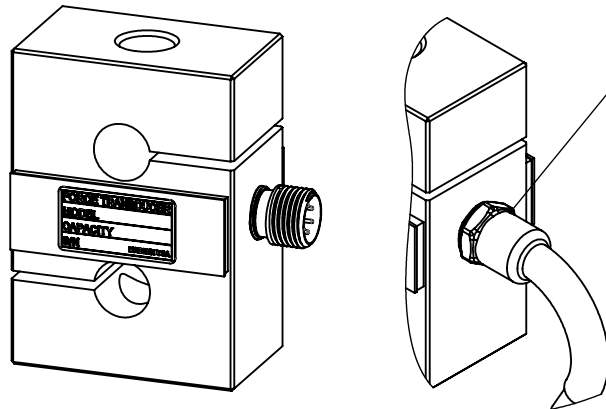
REVISIONS

REV.	DESCRIPTION	DATE	APPROVED
A	INITIAL RELEASE	11/08/2016	DLC

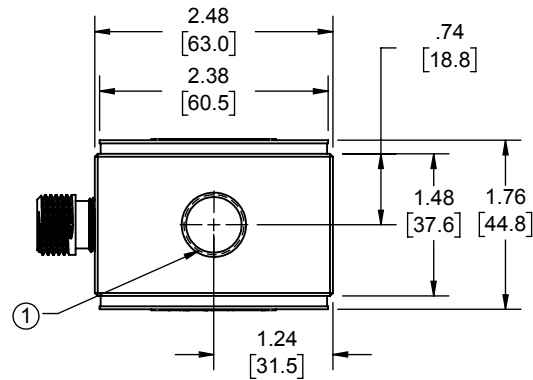
TENSION LOAD  
PRIMARY AXIS



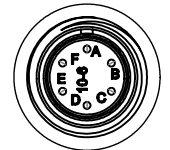
CONNECTOR PINOUT	
PIN	FUNCTION
A	+ EXCITATION
B	+ OUTPUT
C	- OUTPUT
D	- EXCITATION
E	N/C
F	N/C
TENSION UPSCALE	



① .25 [6.4] O.D. 4 CONDUCTOR  
22 GA SHIELDED CABLE



CABLE CONNECTIONS	
COLOR	FUNCTION
RED	+ EXCITATION
GREEN	+ OUTPUT
WHITE	- OUTPUT
BLACK	- EXCITATION
SHIELD	N/C
TENSION UPSCALE	



PC04E-10-6P  
SCALE 1 : 1

CONNECTOR CONFIGURATION DETERMINED BY OPTION CODE

- 5. FLEXURE MATERIAL: NICKEL PLATED STEEL.
- 4. OUTPUT: 1.5 mV/V.
- 3. FATIGUE RATED LOAD CELL.

② COVER COLOR: BLUE.

① STANDARD CABLE LENGTH IS 10FT [3M]  
NON-STANDARD CABLE PER OPTION CODE.

UNLESS OTHERWISE SPECIFIED  
DIMENSIONS ARE IN INCHES [mm]  
TOLERANCES ARE:  
ANGLES ± 0° 30'  
.XX ± .01 [0.25]  
.XXX ± .005 [0.13]

CREATOR	DATE
DESIGNED: RMP	9/26/16
DETAILED: RMP	10/10/16
WEIGHT: (APPROX) 3.2	

**interface**  
ADVANCED FORCE MEASUREMENT  
7401 E. BUTHERUS DR. SCOTTSDALE, AZ USA 85260

TITLE:  
**OUTLINE MODELS:  
SSMF 2500 & 10KN**

SIZE: DWG. NO:  
**A 81811**

SCALE: 1:2 SHEET 1 OF 1

REV:  
**A**