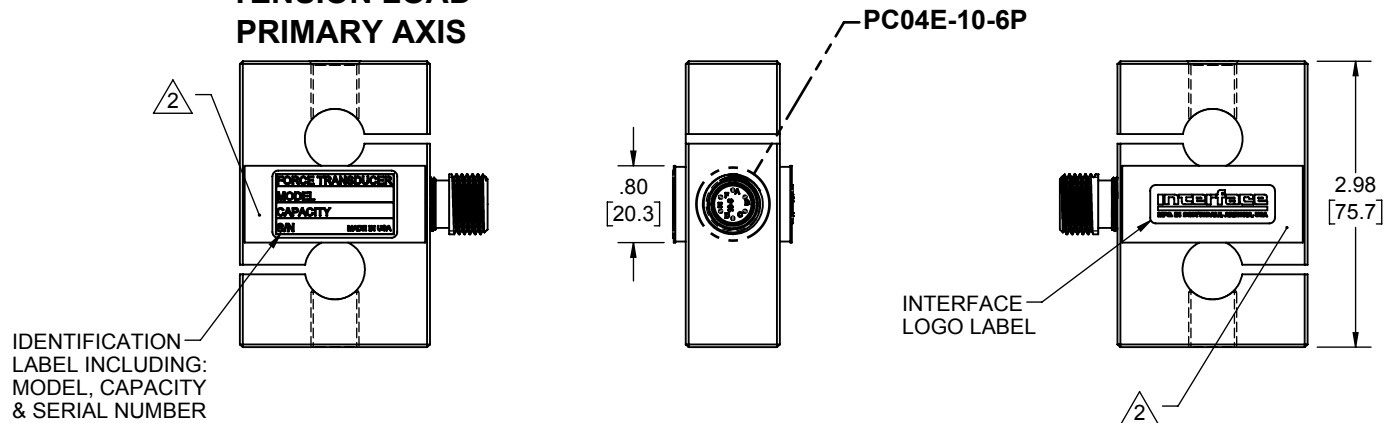


LOAD CELL CHARACTERISTICS					
#	CAPACITY	US CAPACITES		SI CAPACITES	
		250	500, 1000	1000N	2500N, 5000N
1	FLEXURE MATERIAL	ALUMINUM	NICKEL PLATED STEEL	ALUMINUM	NICKEL PLATED STEEL
②	MOUNTING THREAD, BOTH ENDS	.50-20 UNF-3B		M12 X 1.75-6H	

Interface Inc. claims proprietary rights in the information disclosed herein. This drawing is furnished in confidence on the express understanding that neither it nor any reproduction thereof will be disclosed to others or used for the purpose of manufacture or procurement of the article or part shown herein without written permission of Interface Inc. The drawing shall remain the property of Interface Inc. and shall be returned upon request by Interface Inc.

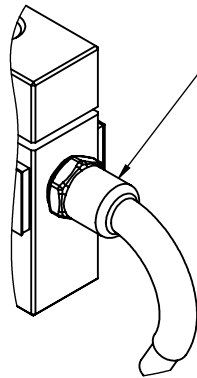
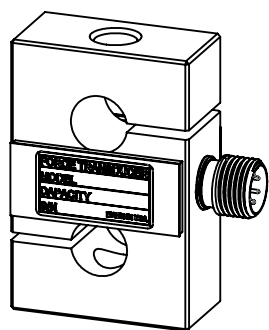
81810			
REVISIONS			
REV.	DESCRIPTION	DATE	APPROVED
A	INITIAL RELEASE	11/08/2016	DLC

**TENSION LOAD
PRIMARY AXIS**

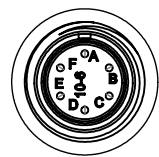
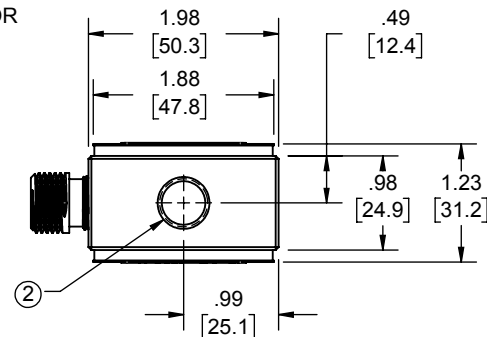


CONNECTOR PINOUT	
PIN	FUNCTION
A	+ EXCITATION
B	+ OUTPUT
C	- OUTPUT
D	- EXCITATION
E	N/C
F	N/C
TENSION UPSCALE	

CABLE CONNECTIONS	
COLOR	FUNCTION
RED	+ EXCITATION
GREEN	+ OUTPUT
WHITE	- OUTPUT
BLACK	- EXCITATION
SHIELD	N/C
TENSION UPSCALE	



① .25 [6.4] O.D. 4 CONDUCTOR
22 GA SHIELDED CABLE



**PC04E-10-6P
SCALE 1 : 1**

CONNECTOR CONFIGURATION DETERMINED BY OPTION CODE

- 4. OUTPUT: 1.5 mV/V.
- 3. FATIGUE RATED LOAD CELL.
- ② COVER COLOR: BLUE.
- ① STANDARD CABLE LENGTH IS 10FT [3M]
NON-STANDARD CABLE PER OPTION CODE.

UNLESS OTHERWISE SPECIFIED DIMENSIONS ARE IN INCHES [mm]	
TOLERANCES ARE:	
ANGLES	± 0° 30'
.XX	± .01 [0.25]
.XXX	± .005 [0.13]
CREATOR	DATE
DESIGNED: RMP	9/26/16
DETAILED: RMP	9/29/16
WEIGHT: (APPROX)	1.3 lbs

interface	
ADVANCED FORCE MEASUREMENT 7401 E. BUTHERUS DR. SCOTTSDALE, AZ USA 85260	
TITLE: OUTLINE MODELS: SSMF 250-1000, 1000N-5000	
SIZE: A	DWG. NO: 81810
SCALE: 1:2	SHEET 1 OF 1
REV: A	