

CALIBRATION ADAPTORS (U.S. & METRIC)

FEATURES & BENEFITS

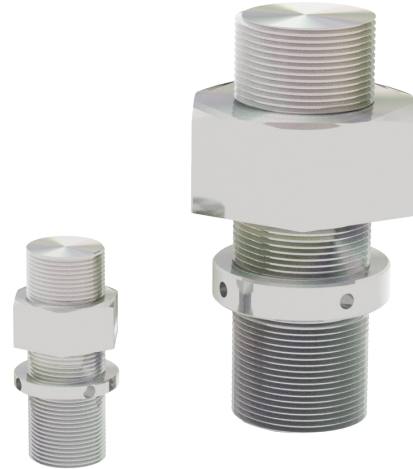
- Improves accuracy
- Spherical end for compression loading
- Metric sizes available

Contact Us today to discuss the right Calibration Adaptor for your application.

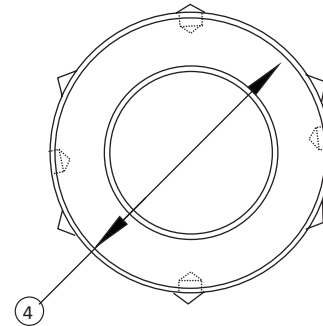
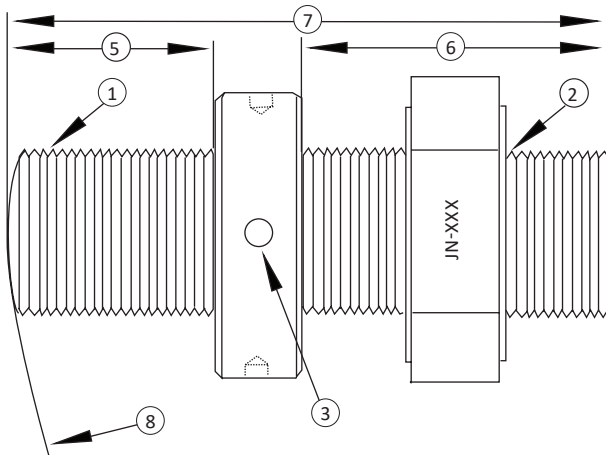
SPECIFICATIONS

MECHANICAL	
Material	Heat treated steel

STANDARD CONFIGURATION



Models CA-102 w/JN-105 & CA-104 w/JN-107 (Shown)



DIMENSIONS

Model	Jam nut included	Size 1 to 2	Application	3		4		5		6		7		8	
				in	mm	in	mm	in	mm	in	mm	in	mm	in	mm
CA-101	JN-103	½-18 to ¾-18	1X10 to 10K	0.25	6.35	1.25	31.8	0.75	19.1	1.5625	39.688	2.8125	71.438	SR 6	SR 152
CA-102	JN-105	1 ¼-12 to 1 ½-12	1X20 to 50K	0.25	6.35	2	51	1.5	38	2.1875	55.563	4.1875	106.363	SR 6	SR 152
CA-103	JN-106	1 ¾-12 to 2 ¼-12	1X32 to 100K	0.25	6.35	3	76	2	51	3.125	79.38	6	152	SR 12	SR 305
CA-105	JN-106	1 ¾-12 to 2 ¾-8	1X32 to 100K	0.25	6.35	3.5	89	2	51	4.875	123.83	7.375	187.33	SR 12	SR 305
CA-104	JN-107	2 ¾-8 to 3 ¼-8	1X40 to 200K	0.3125	7.938	3.5	89	2.5	64	4.875	123.83	8.125	206.38	SR 12	SR 305
CA-201	JN-203	M16X2 to M16X2	1X10 to 50kN	0.25	6.35	1.25	31.8	0.75	19.1	1.5625	39.688	2.8125	71.438	SR 6	SR 152
CA-202	JN-205	M33X2 to M33X2	1X20 to 250kN	0.25	6.35	2	51	1.5	38	2.1875	55.563	4.1875	106.363	SR 6	SR 152
CA-203	JN-206	M42X2 to M42X2	1X32 to 450kN	0.3125	7.938	2.9375	74.613	1.8125	46.038	3.1875	80.963	5.75	146.1	SR 12	SR 305
CA-204	JN-207	M72X2 to M72X2	1X40 to 900kN	0.3125	7.938	4.25	108.0	2.75	70.0	4.75	120.7	8.25	209.6	SR 12	SR 305

Note: X refers to Low Profile™ Load Cell model numbers. For example, 1X10 could be 1010, 1110, or 1210.

International System of Units (SI) dimensions and capacities are provided for conversion only. Standard products have U.S. capacities and dimensions. SI capacities available upon special request and at an additional cost.