

LOAD CELL CHARACTERISTICS

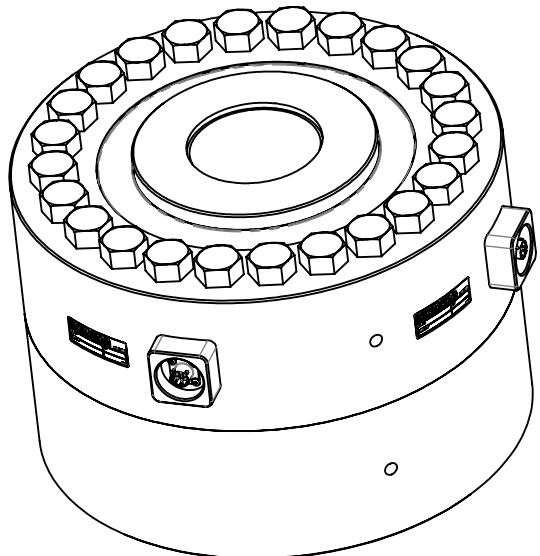
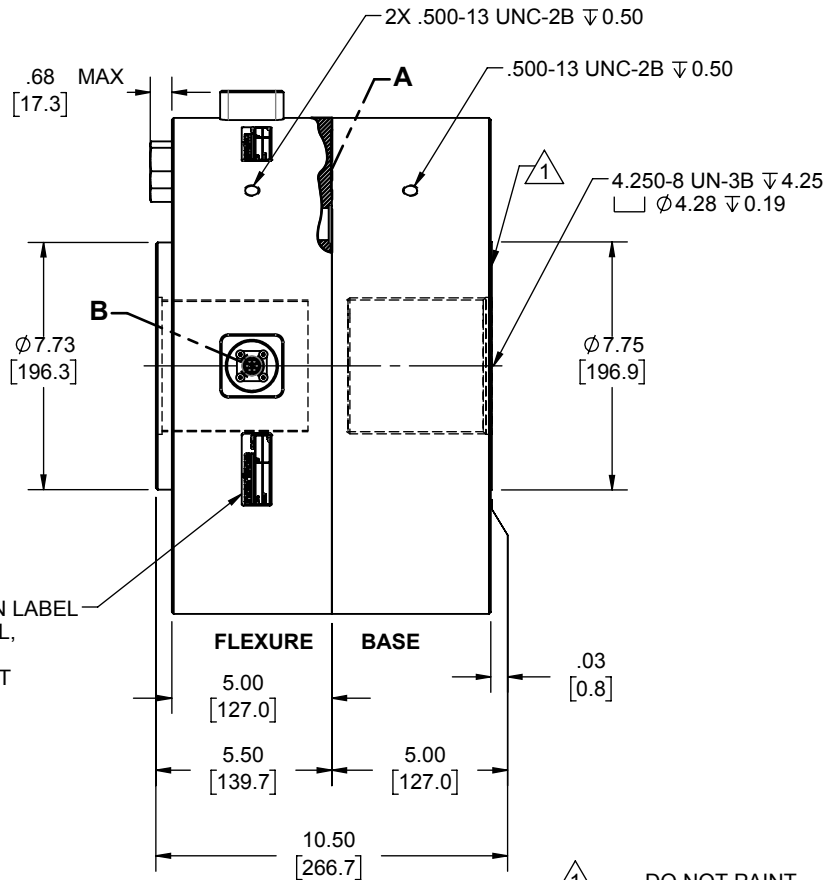
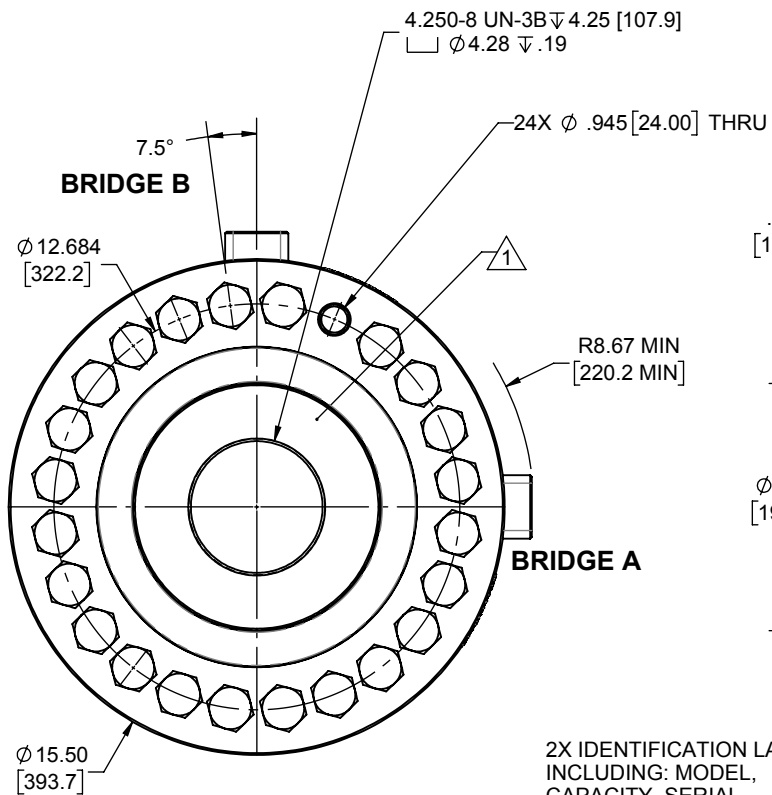
CAPACITY 600 K (lbf)

Interface Inc. claims proprietary rights in the information disclosed herein. This drawing is furnished in confidence on the express understanding that neither it nor any reproduction thereof will be disclosed to others or used for the purpose of manufacture or procurement of the article or part shown herein without written permission of Interface Inc. The drawing shall remain the property of Interface Inc. and shall be returned upon request by Interface Inc.

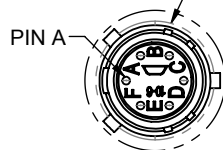
80378

REVISIONS

REV.	DESCRIPTION	DATE	APPROVED
D	DIMENSION 10.70 WAS 10.59	09/23/02	
E	Ø12.68 WAS Ø12.62 BOLT CIRCLE	09/13/04	
F	REMOVED CHG OPTION CODE & CHARTED	07/21/09	
G	UPDATED TO CURRENT STANDARDS	01/23/2018	CS



CONNECTORS: PT02E-10-6P



DETAIL B SCALE 1 : 1

1. DO NOT PAINT.
2. BASE IS OPTIONAL. MODEL NUMBERS ENDING IN (-B) HAVE A BASE INSTALLED.

CONNECTOR PINOUT	
PIN	FUNCTION
A	+ EXCITATION
B	+ SIGNAL
C	- SIGNAL
D	- EXCITATION
E	N/C
F	N/C
TENSION UPSCALE	

UNLESS OTHERWISE SPECIFIED DIMENSIONS ARE IN INCHES [mm]
 TOLERANCES ARE:
 ANGLES ± 0° 30'
 .XX ± .01 [0.25]
 .XXX ± .005 [0.13]

CREATOR	DATE
DESIGNED: LAVAR C.	07/02/02
DETAILED: ME	07/20/09
WEIGHT: (APPROX) 487.44 (lbs)	

interface
 ADVANCED FORCE MEASUREMENT
 7401 E. BUTHERUS DR. SCOTTSDALE, AZ USA 85260

TITLE:
**OUTLINE MODEL:
 1X60 DUAL BRIDGE**

SIZE: A	DWG. NO: 80378	REV: G
SCALE: 1:6	SHEET 1 OF 1	