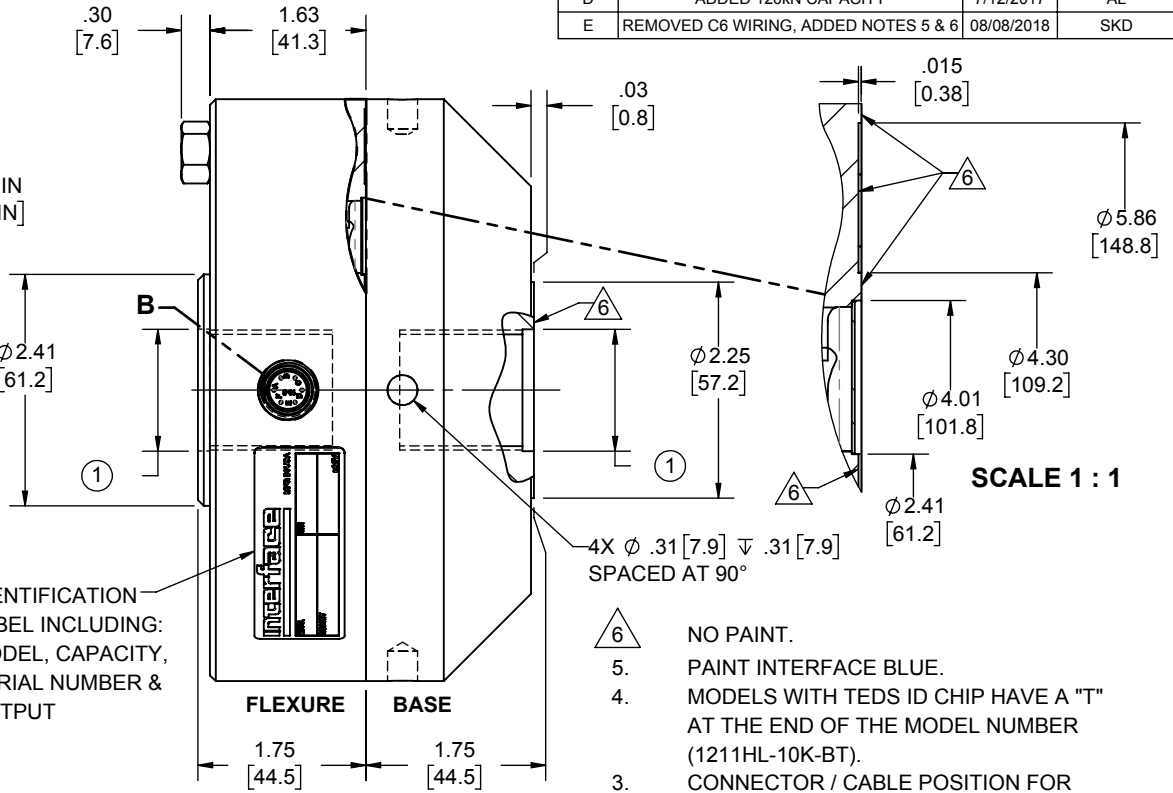
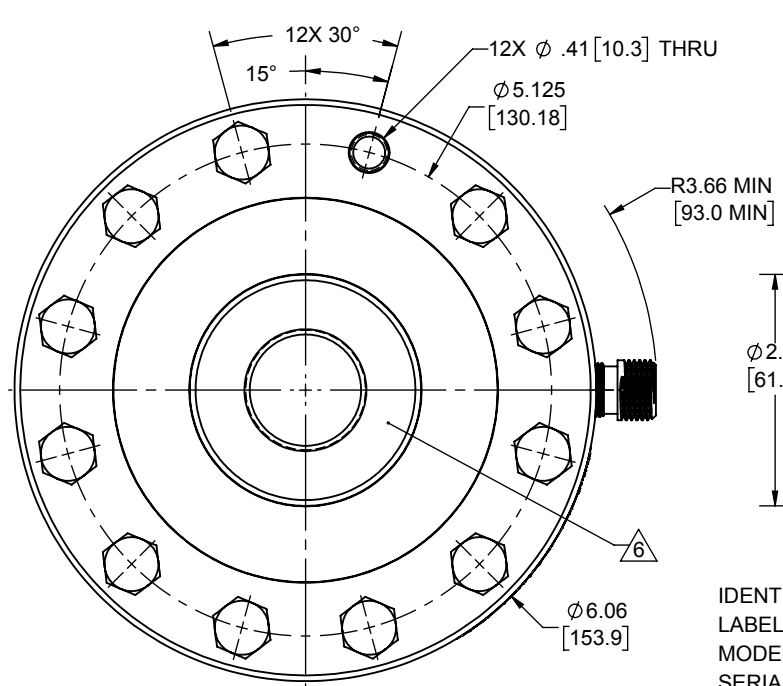


LOAD CELL CHARACTERISTICS

| # | CAPACITY | US CAPACITIES | SI CAPACITIES |
|---|-----------------------------------|---|--|
| | | 12.5K, 15K, 20K, 25K (lbf) | 50, 100, 120 (kN) |
| 1 | FLEXURE / BASE THREAD & C'BORE | 1.250-12 UNF-3B ▽ 1.40[35.6] □ φ 1.27 ▽ .12[3] | M33 X 2-4H ▽ 1.40[35.6] □ φ 1.32[33.5] ▽ .12[3] |

Interface Inc. claims proprietary rights in the information disclosed herein. This drawing is furnished in confidence on the express understanding that neither it nor any reproduction thereof will be disclosed to others or used for the purpose of manufacture or procurement of the article or part shown hereon without written permission of Interface Inc. The drawing shall remain the property of Interface Inc. and shall be returned upon request by Interface Inc.

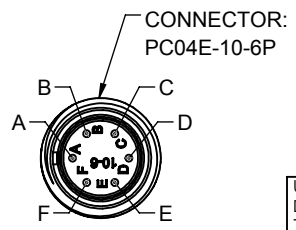
| REVISIONS | | | |
|-----------|---|------------|----------|
| REV. | DESCRIPTION | DATE | APPROVED |
| B | ADDED OUTER & INNER RING SECTION | 09/12/06 | |
| C | REDRAWN & UPDATED TO CURRENT STANDARDS, ADDED ADDITIONAL CONNECTOR PINOUTS & NOTE 4 | 05/02/16 | DLC |
| D | ADDED 120KN CAPACITY | 7/12/2017 | AL |
| E | REMOVED C6 WIRING, ADDED NOTES 5 & 6 | 08/08/2018 | SKD |



IDENTIFICATION LABEL INCLUDING: MODEL, CAPACITY, SERIAL NUMBER & OUTPUT

CABLE TYPE: 2
φ .25 [6.4] O.D., 7 CONDUCTOR, 22 GAGE, SHIELDED

- 6 NO PAINT.
- 5. PAINT INTERFACE BLUE.
- 4. MODELS WITH TEDS ID CHIP HAVE A "T" AT THE END OF THE MODEL NUMBER (1211HL-10K-BT).
- 3. CONNECTOR / CABLE POSITION FOR MULTIPLE BRIDGE LOAD CELLS ARE ORIENTATED IN 90° CCW INCREMENTS.
- 2 STANDARD CABLE LENGTH IS 10 FT [3 M]. NON-STANDARD CABLE LENGTH PER OPTION CODE.
- 1. BASE IS OPTIONAL ON 1020 & 1220, MODEL NUMBERS ENDING IN (-B) HAVE A BASE INSTALLED.



**DETAIL B
SCALE 1 : 1**

| CONNECTOR PINOUT | | INTEGRAL CABLE MODELS | |
|------------------|--------------|------------------------------|--------------|
| PIN | 4 WIRE (C1) | 4 WIRE (C1 WITH TEDS OPTION) | FUNCTION |
| A | + EXCITATION | + EXCITATION | + EXCITATION |
| B | + SIGNAL | + SIGNAL | + SIGNAL |
| C | - SIGNAL | - SIGNAL | - SIGNAL |
| D | - EXCITATION | - EXCITATION | - EXCITATION |
| E | N/C | TEDS DATA | + SENSE |
| F | N/C | TEDS GROUND | - SENSE |
| | | WHITE / YELLOW | SHUNT CAL |
| | | SHIELD | N/C |

ALL READ UPSCALE IN TENSION

| APPROX WEIGHT (lbs) | |
|---------------------|------|
| WITH BASE | 21.7 |
| WITHOUT BASE | 9.4 |

| | |
|--|---------------|
| UNLESS OTHERWISE SPECIFIED DIMENSIONS ARE IN INCHES [mm] | |
| TOLERANCES ARE: | |
| ANGLES ± 0° 30' | |
| .XX | ± .01 [0.25] |
| .XXX | ± .005 [0.13] |
| CREATOR: | DATE |
| DESIGNED: | |
| DETAILED: BKS | 3/24/1995 |
| WEIGHT: (APPROX) | |

Interface
7418 E. HELM DRIVE
SCOTTSDALE, AZ 85260 USA

FORCE MEASUREMENT SOLUTIONS

TITLE:
**OUTLINE MODELS:
1020, 1120, 1220**

SIZE: DWG. NO: **80003**

SCALE: 1:2

SHEET 1 OF 1

REV: **E**