

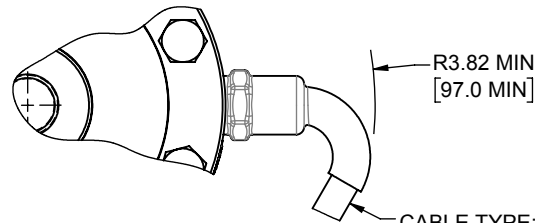
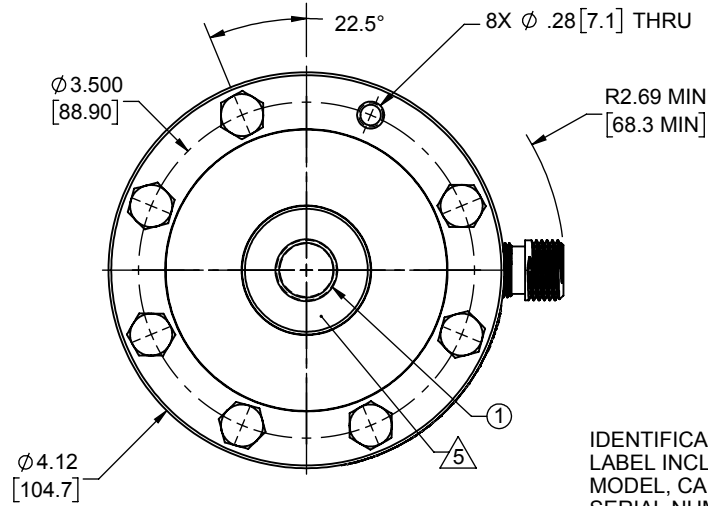
**LOAD CELL CHARACTERISTICS**

#	CAPACITY	US CAPACITIES 250, 300, 500, 1K, 2K, 3K (lbf)	SI CAPACITIES 1.25, 1.5, 2.5, 5, 10 (kN)
1	FLEXURE THREAD, DEPTH & COUNTERBORE	.625-18 UNF-3B $\nabla$ 1.12 $\square$ $\phi$ .645 $\nabla$ 0.12	M16 X 2-4H $\nabla$ 28.6 $\square$ $\phi$ 16.4 $\nabla$ 3.05
2	BASE THREAD, DEPTH & COUNTERBORE	.625-18 UNF-3B $\nabla$ 0.87 $\square$ $\phi$ .645 $\nabla$ 0.12	M16 X 2-4H $\nabla$ 22.1 $\square$ $\phi$ 16.4 $\nabla$ 3.05

Interface Inc. claims proprietary rights in the information disclosed herein. This drawing is furnished in confidence on the express understanding that neither it nor any reproduction thereof will be disclosed to others or used for the purpose of manufacture or procurement of the article or part shown herein without written permission of Interface Inc. The drawing shall remain the property of Interface Inc. and shall be returned upon request by Interface Inc.

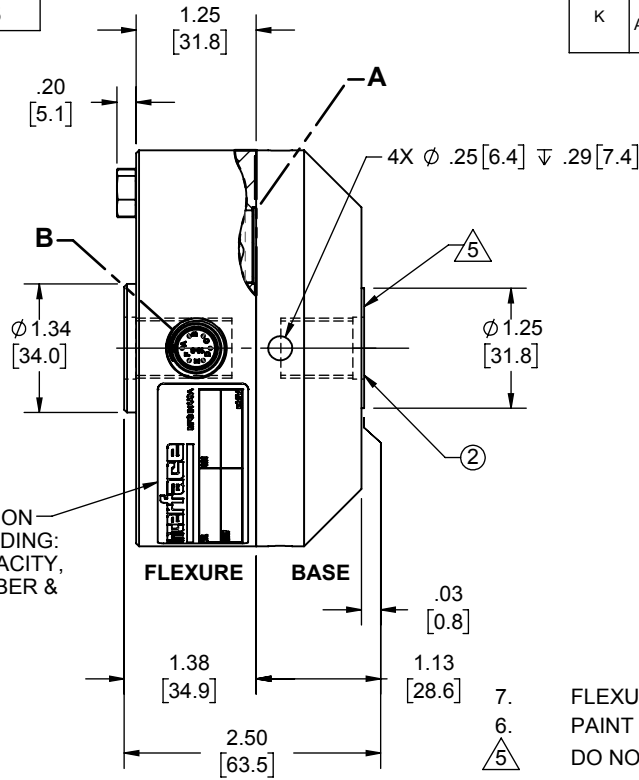
80001

REVISIONS			
REV.	DESCRIPTION	DATE	APPROVED
G	22 HUB SURFACE WAS RECES. HUB CLEAR.	09/12/06	
H	REDRAWN & UPDATED TO CURRENT STANDARDS, ADDED ADDITIONAL CONNECTOR PINOUTS & NOTE 4	05/02/16	DLC
J	ADDED NOTE 5 (AND REFERENCES)	04/17/2018	AL
K	REMOVED C6 WIRING, 2.5K, 5K, 10K, 12.5KN - 50KN CAPACITIES, ADDED NOTES 6 & 7, ADDED WEIGHT TABLE, TITLE WAS 1010, 1110 & 1210	09/14/2018	SKD

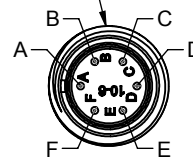


CABLE TYPE:  $\triangle$   
 $\phi$ 0.25 [6.4] O.D., 7 CONDUCTOR,  
 22 GAGE, SHIELDED

IDENTIFICATION LABEL INCLUDING:  
 MODEL, CAPACITY,  
 SERIAL NUMBER &  
 OUTPUT

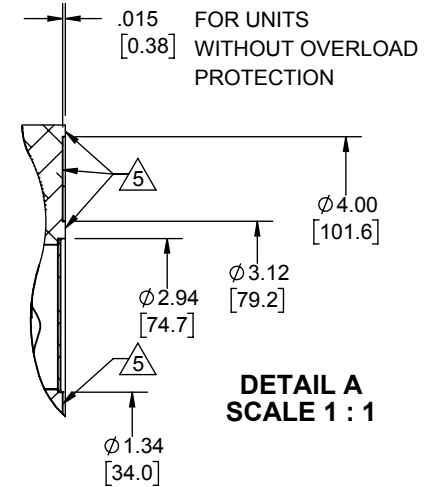


CONNECTOR:  
 PC04E-10-6P



**DETAIL B  
 SCALE 1 : 1**

APPROX WEIGHT (lbs)	
WITH BASE	2.59
WITHOUT BASE	1.10



**DETAIL A  
 SCALE 1 : 1**

7. FLEXURE/BASE MATERIAL: ALUMINUM
6. PAINT INTERFACE BLUE
- $\triangle$  DO NOT PAINT
4. MODELS WITH TEDS ID CHIP HAVE A "T" AT THE END OF THE MODEL NUMBER (1010AF-500-TB).
3. CONNECTOR / CABLE POSITION FOR MULTIPLE BRIDGE LOAD CELLS ARE ORIENTATED IN 90° CCW INCREMENTS. STANDARD CABLE LENGTH IS 10 FT [3 M].
- $\triangle$  NON-STANDARD CABLE LENGTH PER OPTION CODE.
1. BASE IS OPTIONAL ON 1010 & 1210, MODEL NUMBERS ENDING IN (-B) HAVE A BASE INSTALLED.

CONNECTOR PINOUT		INTEGRAL CABLE MODELS	
PIN	4 WIRE (C1)	4 WIRE (C1 WITH TEDS OPTION)	FUNCTION
A	+ EXCITATION	+ EXCITATION	+ EXCITATION
B	+ SIGNAL	+ SIGNAL	+ SIGNAL
C	- SIGNAL	- SIGNAL	- SIGNAL
D	- EXCITATION	- EXCITATION	- EXCITATION
E	N/C	TEDS DATA	+ SENSE
F	N/C	TEDS GROUND	- SENSE
		WHITE / YELLOW	SHUNT CAL
		SHIELD	N/C

ALL READ UPSCALE IN TENSION

UNLESS OTHERWISE SPECIFIED  
 DIMENSIONS ARE IN INCHES [mm]  
 TOLERANCES ARE:  
 ANGLES  $\pm$  0° 30'  
 .XX  $\pm$  .01 [0.25]  
 .XXX  $\pm$  .005 [0.13]

CREATOR: BKS  
 DESIGNED: 03/24/95  
 DETAILED: BKS  
 WEIGHT: (APPROX)

**Interface**  
 FORCE MEASUREMENT SOLUTIONS  
 7418 E. HELM DRIVE  
 SCOTTSDALE, AZ 85260 USA

TITLE:  
**OUTLINE MODELS: 1X10,  
 250 - 3K, 1.25KN - 10KN**

SIZE: DWG. NO: **80001**  
 SCALE: 1:2 SHEET 1 OF 1

REV: **K**