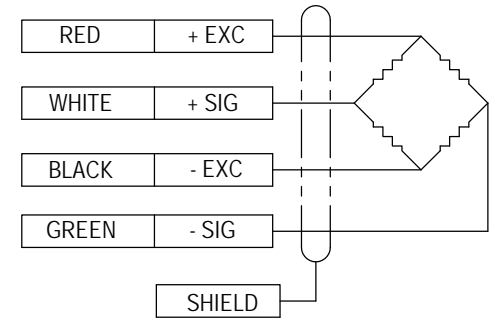
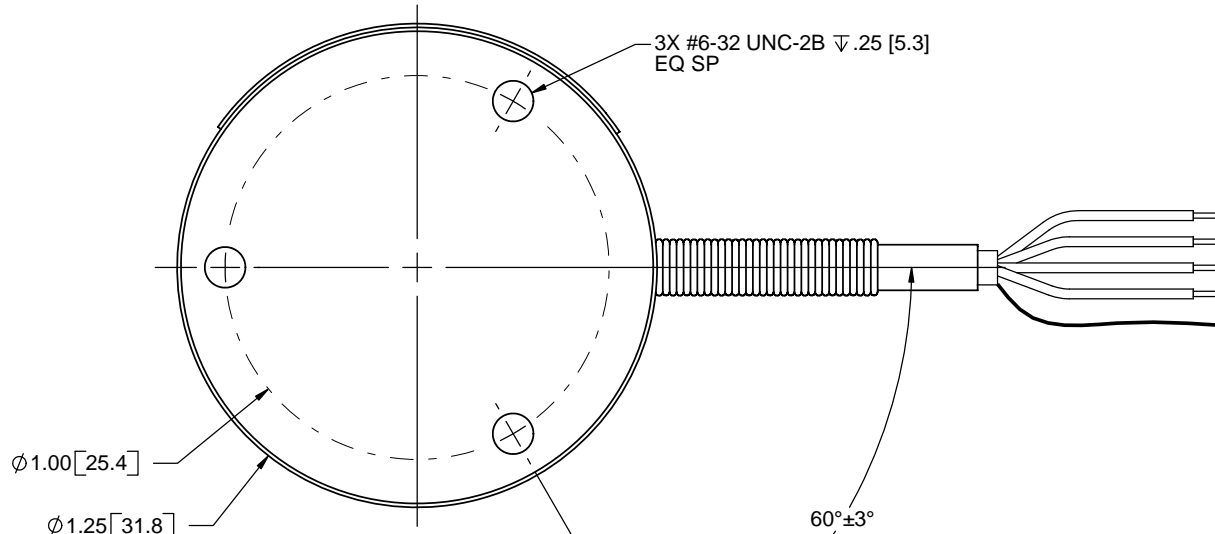
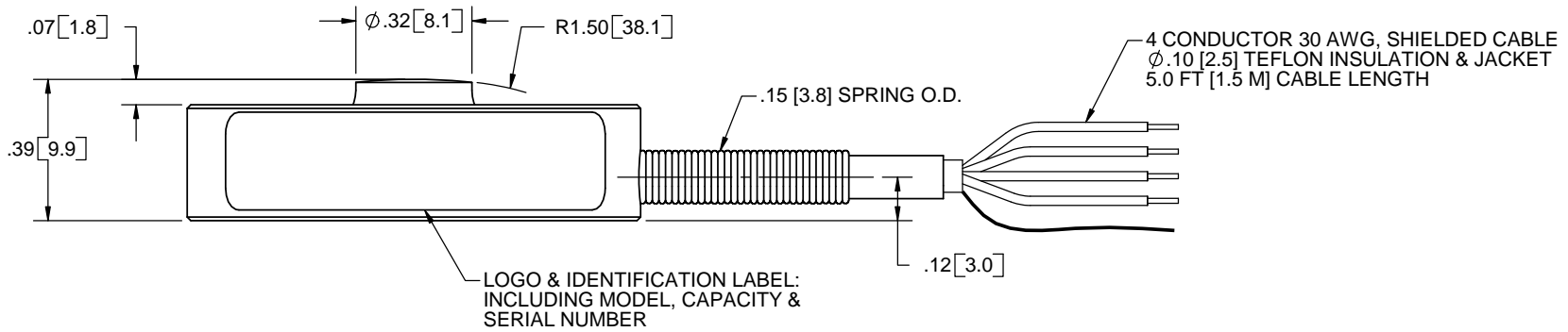


Interface Inc. claims proprietary rights in the information disclosed herein. This drawing is furnished in confidence on the express understanding that neither it nor any reproduction thereof will be disclosed to others or used for the purpose of manufacture or procurement of the article or part shown herein without written permission of Interface Inc. The drawing shall remain the property of Interface Inc. and shall be returned upon request by Interface Inc.

80675

REVISIONS

REV	DESCRIPTION	DATE	APPROVED
A	INITIAL RELEASE	04/03/07	
B	ADDED DIM 7 * 8, 9 WAS 7 ORIG.	06/06/12	
C	LOCATED CABLE RELATIVE TO MTG HOLES	10/23/12	
D	REMOVED OUTPUT FROM LABEL DESC	07/29/13	<i>me</i>



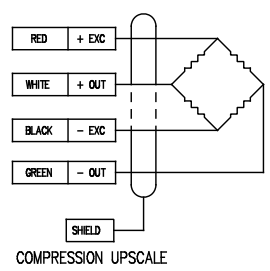
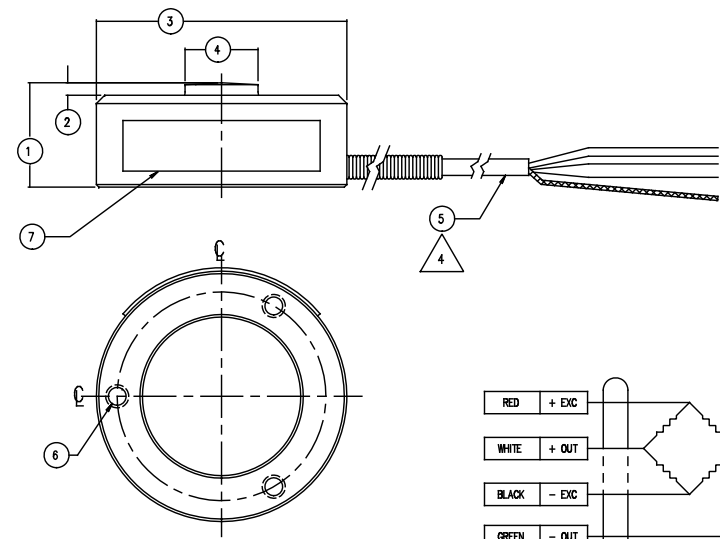
COMPRESSION UPSCALE

4. OUTPUT: 2 mV/V
3. FLEXURE MATERIAL: STAINLESS STEEL
2. DIMENSIONAL TOLERANCE: ± 0.01 [0.3]
1. ALL DIMENSIONS ARE IN INCHES & [mm] UNLESS OTHERWISE SPECIFIED

UNLESS OTHERWISE SPECIFIED DIMENSIONS ARE IN INCHES TOLERANCES ARE:		REMOVE BURRS AND SHARP EDGES .02 MAX SURFACE FINISH 63 MICROINCHES		interface	
ANGLES	$\pm 0^\circ 30'$	CREATOR	DATE	ADVANCED FORCE MEASUREMENT	
.XX	$\pm .010$	DESIGNED:		7401 E. BUTHERUS DR. SCOTTSDALE, AZ USA 85260	
.XXX	$\pm .005$	DETAILED:		TITLE:	
STD. RADII	.015 - .035	JEP	03/29/07	OUTLINE, MODEL	
ϕ RUNOUT	.002			LBM-250, -500, -1K, -2K	
MATERIAL:	WEIGHT:			SIZE: DWG. NO:	REV:
FINISH:	OUTPUT:	CAM DATA:		A 80675	D
				SCALE: 2:1	SHEET 1 OF 1

80447

REVISIONS			
REV	DESCRIPTION	DATE	APPROVED
A	INITIAL RELEASE	09-29-04	
B	ADDED THE 7.5K CAPACITY	12-06-07	



- △ STANDARD CABLE LENGTH IS 5 FT. (3 M)
NON-STANDARD CABLE LENGTH PER OPTION CODE
- 3. OUTPUT = 2.00 MV/V NOMINAL
- 2. DIMENSIONAL TOLERANCE: ± 0.01 & (± 0.3)
- 1. ALL DIMENSIONS ARE IN INCHES & (MM)

LOAD CELL CHARACTERISTICS		U.S. CAPACITIES
#	CAPACITY	5K, 7.5K, 10K (lbf)
1	OVERALL HEIGHT	0.63 (15.9)
2	HUB HEIGHT	0.08 (1.9)
3	OUTSIDE DIAMETER	1.50 (38.1)
4	HUB DIAMETER	0.44 (11.1)
5	CABLE TYPE	0.10 (2.5) O.D. 4 CONDUCTOR TEFLON SHIELDED
6	MOUNTING HOLES	#6-32 UNC X 0.25 DEEP, EQ SP ON A 1.25 B.C.
7	IDENTIFICATION LABEL INCLUDING: MODEL, CAPACITY, & SERIAL NUMBER	

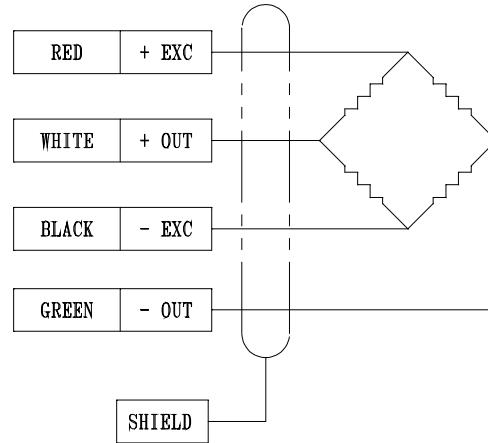
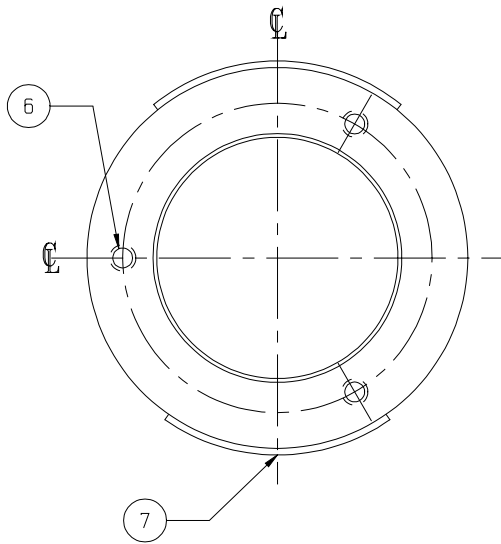
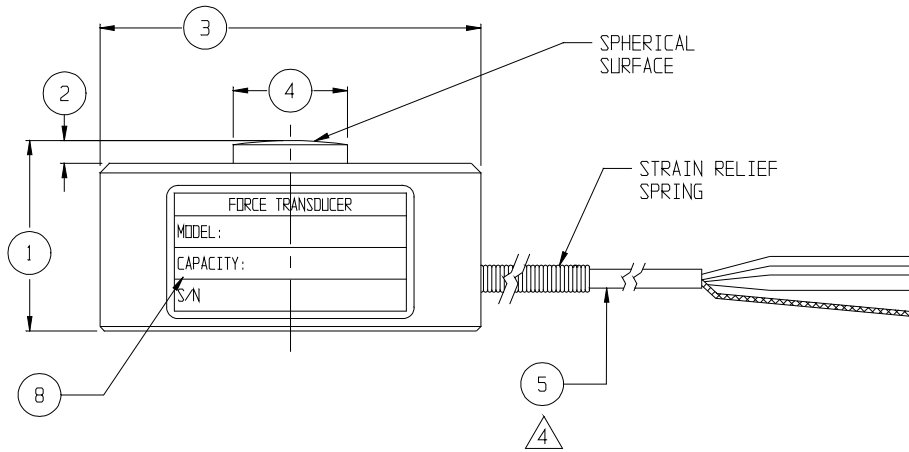
INTERFAITH, INC.
7401 E. BUTHERUS DR. SCOTTSDALE, ARIZONA 85260

TITLE: OUTLINE MODEL: DWG NO.:
LBM-5K, 7.5K, 10K 80447

SIZE: A DRAWN BY: JEP DATE: 11-14-03 REV: B
SCALE: 1.5:1 APPROVED BY: SHEET 1 OF 1

Interfaith Inc. retains property rights in the information disclosed herein. This drawing is furnished in confidence on the express understanding that neither it nor any reproduction thereof will be disclosed in whole or in part for the purpose of manufacture or procurement of the article or part shown herein without the prior written consent of Interfaith Inc. The drawing shall remain Interfaith's property and shall be returned on Interfaith's request.

REVISIONS			
REV	DESCRIPTION	DATE	APPROVED
A	INITIAL RELEASE	04-03-07	



COMPRESSSION UPSCALE

4 STANDARD CABLE LENGTH IS 5FT. (3M) NON-STANDARD CABLE LENGTH PER OPTION CODE.

3. OUTPUT = 2.00 MV/V NOMINAL.

2. DIMENSIONAL TOLERANCE: ± 0.01 & (± 0.3).

1. ALL DIMENSIONS ARE IN INCHES & (MM).

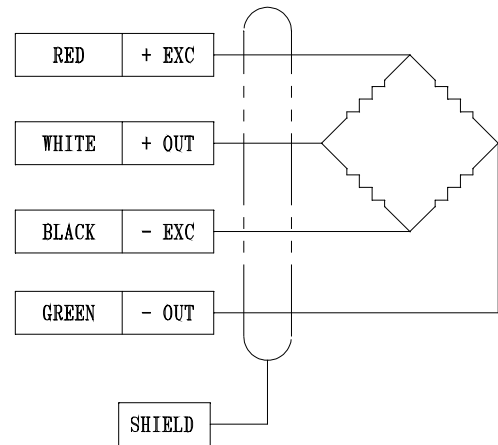
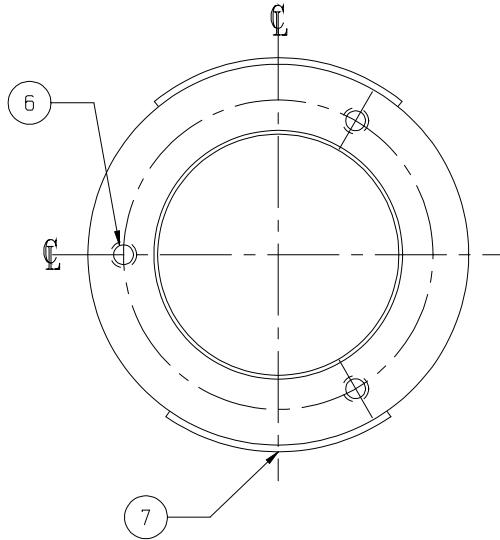
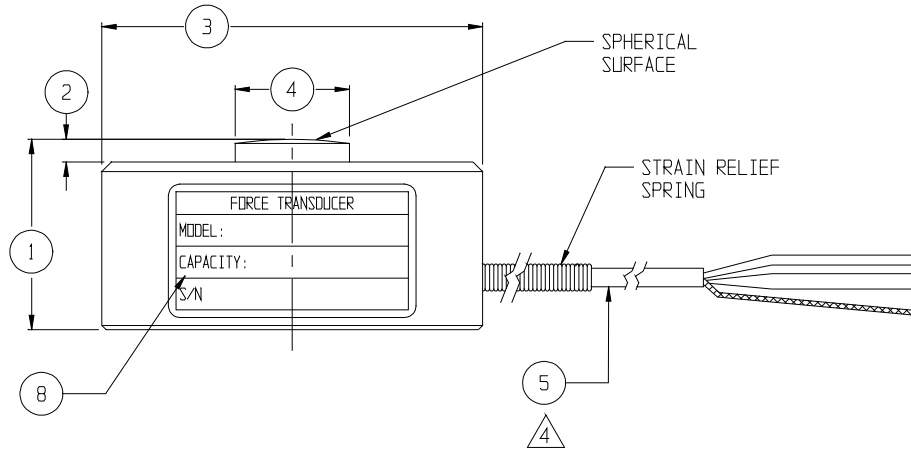
	LOAD CELL CHARACTERISTICS	U.S. CAPACITIES
#	CAPACITY	15K, 20K, 30K (1bf)
1	OVERALL HEIGHT	1.00 (25.4)
2	HUB HEIGHT	0.12 (3.0)
3	OUTSIDE DIAMETER	2.00 (50.8)
4	HUB DIAMETER	0.60 (15.2)
5	CABLE TYPE	0.10 (2.5) D.D. 4 CONDUCTOR TEFLON SHIELDED
6	MOUNTING HOLES (3)	#6-32 UNC X 0.25 DEEP, EQ SP ON A 1.625 B.C.
7	LABEL	LOGD (12175)
8	IDENTIFICATION LABEL INCLUDING: MODEL, CAPACITY, & SERIAL NUMBER (12201)	

Interface, Inc.
7401 E. BUTHERUS DR. SCOTTSDALE, ARIZONA 85260

TITLE:	DWG NO.:
OUTLINE MODEL: LBM-20K	80676
SIZE: A	DRAWN BY: JEP
DATE: 03-27-07	REV: A
SCALE: 1:1	APPROVED BY:
SHEET 1 OF 1	

Interface Inc. claims propriety rights in the information disclosed herein. This drawing is furnished in confidence on the express understanding that neither it nor any reproduction thereof will be disclosed to others or used for the purpose of manufacture or procurement of the article or part shown herein without written permission of Interface Inc. The drawing shall remain Interface's property and shall be returned on Interface's request.

REVISIONS			
REV	DESCRIPTION	DATE	APPROVED
A	INITIAL RELEASE	04-17-07	



COMPRESSION UPSCALE

△ STANDARD CABLE LENGTH IS 5FT. (3M) NON-STANDARD CABLE LENGTH PER OPTION CODE.

- 3. OUTPUT = 2.00 MV/V NOMINAL.
- 2. DIMENSIONAL TOLERANCE: ± 0.01 & (± 0.3).
- 1. ALL DIMENSIONS ARE IN INCHES & (MM).

	LOAD CELL CHARACTERISTICS	U.S. CAPACITIES
#	CAPACITY	50K (1bf)
1	OVERALL HEIGHT	1.50 (38.1)
2	HUB HEIGHT	0.18 (4.6)
3	OUTSIDE DIAMETER	3.00 (76.2)
4	HUB DIAMETER	0.78 (19.8)
5	CABLE TYPE	0.10 (2.5) O.D. 4 CONDUCTOR TEFLON SHIELDED
6	MOUNTING HOLES (3)	#6-32 UNC X 0.25 DEEP, EQ SP ON A 2.375 B.C.
7	LABEL	LOGO (12175)
8	IDENTIFICATION LABEL INCLUDING: MODEL, CAPACITY, & SERIAL NUMBER (12201)	

Interface, Inc.
7401 E. BUTHERUS DR. SCOTTSDALE, ARIZONA 85260

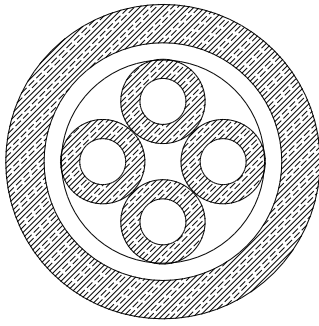
TITLE: OUTLINE MODEL: LBM-50K DWG NO.: 80677

SIZE: A DRAWN BY: JAS DATE: 04-09-07 REV: A

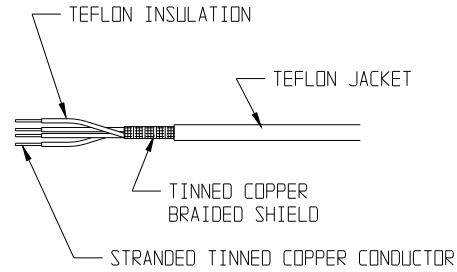
SCALE: 1:1 APPROVED BY: SHEET 1 OF 1

Interface Inc. claims propriety rights in the information disclosed herein. This drawing is furnished in confidence on the express understanding that neither it nor any reproduction thereof will be disclosed to others or used for the purpose of manufacture or procurement of the article or part shown herein without written permission of Interface Inc. The drawing shall remain Interface's property and shall be returned on Interface's request.

REVISIONS			
REV	DESCRIPTION	DATE	APPROVED
A	INITIAL RELEASE	06-05-02	



20:1
SCALE



SINGLE CONDUCTOR: 30 AWG 7/38 STRAND TINNED OR SILVER PLATED COPPER
 TEFLON INSULATION, NOM. WALL .007
 INSULATION NOMINAL DIA. .028
 COLOR CODE: RED, BLACK, GREEN, WHITE

SHIELD: BRAIDED TINNED COPPER

JACKET: TEFLON
 COLOR: WHITE
 OVERALL DIAMETER: .094 ± .005

TEMPERATURE RATING: -65 TO 150 °C

UNLESS OTHERWISE SPECIFIED
 ANGLES +/- 0°30'
 TWO DECIMALS +/- .010
 THREE DECIMALS +/- .005
 STD. RADII .015-.035
 Ø RUNDOUT .002
 REMOVE BURRS & SHARP EDGES .02 MAX
 SURFACE FINISH 63 MICROINCHES

Interface, Inc.			
7401 E. BUTHERUS DR. SCOTTSDALE, ARIZONA 85260			
TITLE: CABLE SPEC 4 CONDUCTOR MINIATURE TEFLON		DWG NO.: 12945	
SIZE: A	DRAWN BY: JEP	DATE: 05-29-02	REV: A
SCALE: 1:1	APPROVED BY:	SHEET 1 OF 1	
<small>Interface Inc. claims propriety rights in the information disclosed herein. This drawing is furnished in confidence on the express understanding that neither it nor any reproduction thereof will be disclosed to others or used for the purpose of manufacture or procurement of the article or part shown herein without written permission of Interface Inc. The drawing shall remain Interface's property and shall be returned on Interface's request.</small>			