



PRESSURE IMAGING

INDUSTRIAL

KEY FEATURES



SENSORS – XSENSOR systems feature rugged and durable sensors designed to withstand industrial testing conditions and to provide repeatable and accurate pressure distribution information. Key features include:

- ▶ Thin (less than 1mm in thickness)
- ▶ Flexible
- ▶ Repeatable date (+/- 5%)
- ▶ Durability (calibration only required after 100+ uses)
- ▶ Size (ranging from single cell sensors to larger sensors)
- ▶ Resolution (as small as 1.15mm)

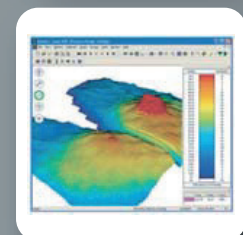
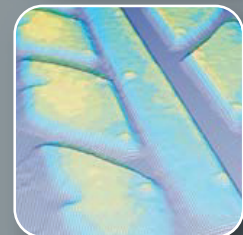
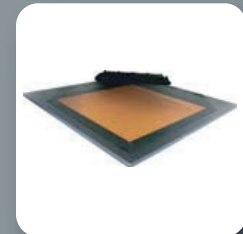


PLATFORM – Platform – The **X3 PRO** platform is designed for data intensive industrial applications where speed and accuracy of pressure distribution is critical. The **X3 PRO** platform is a versatile pressure imaging system and has been used in a number of industrial and research applications including tire sensors, vehicle door sensors, large bed sensors, impact testing and vibration testing.



SOFTWARE – XSENSOR's X3 Professional 5.0 captures calibrated and raw data in real-time and features enhanced functionality designed specifically for industrial research and testing applications. Customized software packages are also available. X3 Professional 5.0 software features:

- ▶ Export functionality (export frames with comments based on statistical criteria, centre of gravity, place holders, etc.)
- ▶ Delayed recording
- ▶ Trigger recording
- ▶ Video capture and playback
- ▶ Sensor group templates
- ▶ Synchronization with other devices including time delay triggers





AEROSPACE



AUTOMOTIVE

PRESSURE IMAGING

X3 TECHNOLOGY – ENHANCED PERFORMANCE

The XSENSOR X3 Technology Series pressure imaging systems feature faster processing power, improved sensor accuracy, and increased software flexibility to offer the most advanced pressure imaging system available to engineering and design specialists.

XSENSOR technology is used in over 30 countries by many of the world's industrial and research leaders, including:

- BMW
- Cisco
- General Motors
- Johnson Controls
- Lear Corporation
- NASA
- Volkswagen
- Ford



SPEED – ACCURACY – RELIABILITY

XSENSOR Technology Corporation is a world leader in the design and production of industrial pressure mapping sensors for use in the automotive, aerospace and engineering sectors.

Product designers, researchers and test engineers use XSENSOR pressure imaging systems throughout the product design, testing and process control cycle to measure and accurately assess pressure related issues and enhance product performance.

XSENSOR systems are used in a wide range of industrial applications, including:

- ◆ Design and testing of car, truck, motorcycle and airplane seating
- ◆ Tire tread analysis
- ◆ Door seal testing
- ◆ Manufacturing presses and rollers (nip and shoe press)
- ◆ Wafer polishing
- ◆ Furniture design
- ◆ Robotics

INNOVATORS IN PRESSURE IMAGING

XSENSOR Technology Corporation designs, manufactures and sells the most advanced pressure imaging systems for use in medical, industrial, and point-of-sale environments.

An internationally recognized leader, XSENSOR features capacitive technology for quickly and accurately measuring dynamic interface pressure. XSENSOR technology is used in over 30 countries by professionals in the mattress, office furniture, healthcare and industrial engineering sectors.

THE XSENSOR ADVANTAGE



SENSOR SUPERIORITY—XSENSOR's proprietary sensors and sensor pads offer superior durability, flexibility and performance. XSENSOR's seat, body and custom sensor pads last longer, offer a greater degree of conformance and suppleness, provide repeatable results, hold calibration, and have more sensors per square inch than any other sensors available.



CUSTOM SOLUTIONS—XSENSOR Technology Corporation works collaboratively with customers and offers a wide range of sensor pad sizes and software packages. This approach ensures each customer is provided with a solution designed for their specific application.



X3 TECHNOLOGY—XSENSOR pressure imaging systems feature state-of-the-art X3 technology. Offering increased portability, wireless set-up, and high speed data transfer, X3 technology features best in class product functionality, design and performance.

X3 TECHNOLOGY

XSENSOR's X3 Technology Series offers industrial users the ability to process a large volume of pressure data quickly, while still maintaining impressive accuracy. Our new industrial system includes our revolutionary **X3 PRO** platform, X3 Professional 5.0 software and a variety of sensor options. This powerful combination of platform, software and sensor has created a new standard in pressure imaging.

X3 Professional 5.0 Software — XSENSOR's X3 Professional 5.0 captures calibrated and raw data in real-time, and features enhanced functionality designed specifically for users with sophisticated pressure imaging requirements, such as industrial research and design, process control analysis and data intensive medical research. X3 Professional 5.0 provides a number of value added features designed with industrial and testing applications in mind.

X3 PROFESSIONAL 5.0 SOFTWARE FEATURES

- 2D view
- 2D contouring
- File recording
- 3D view
- Project/Client file management
- Multiple session files loaded
- Sensor groups
- Numeric mode view
- Right click zoom-ins (2 – sizeable)
- Pressure over time
- Pressure distribution
- Multi display mode
- Comments/Text field
- Center of gravity
- 16 bit pressure data resolution
- Online SW registration & installation counter
- Recalibration indicator/counter
- Enhanced print-out/report templates
- Video synch (frame capture)
- Frame attributes (used for export criteria)
- Data editing within a file
- Define colors
- Timing and recorder triggers
- Straight line dimension calculator
- Total force/load measurement
- Voice file recording
- Record preview mode (reading/display pad without saving)