

## ILPW STANDARD WIRELESS LOAD MEASURING PIN (U.S. & METRIC)

The Interface range of wireless load measuring pins are designed for general use. They are a simple and versatile type of load cell that are used in a large variety of applications such as cranes, winches, hoists, load shackles and bearing blocks. They are easily installed into machines by replacing any existing load bearing pin to provide accurate, real time monitoring of load forces. Machined from high tensile stainless steel and supplied complete with an keeper plate, all our load measuring pins are built to exacting standards and proof loaded to 150% of normal rated load. Our standard wireless load pin range covers ratings between 7.7K to 3,307 lbf (3.5 to 1500 MT), and can be provided as shown on this data sheet or can be modified to meet a particular application requirement. The unique wireless housing is manufactured from semi-aromatic polyamide plastic making the load pin cell far more compact and reducing the overall product weight. Located in the housing are two AAA alkaline batteries which can be easily accessed by removing the telemetry housing cover, while the internal electronics underneath remain completely sealed. The antenna is also internally mounted, protecting it from accidental damage during use and handling. The batteries are standard AAA alkaline batteries, which are readily available and low cost. The ILPW is supplied as standard without any additional wireless devices to enable greater flexibility with the configuration and ordering of the product. The ILPW can be used with any of the WTS range of wireless instrumentation, whether this be for a simple display system using the WTS-BS-1-HS, or more complex systems using WTS-BS-1 HA for multiple load pins.

### FEATURES & BENEFITS

- Capacities range from 7.7K lbf (3.5 MT) to 3,307K lbf (1500 MT)
- Keeper plate supplied
- Environmentally Sealed to IP67
- Stainless Steel Construction
- Design support software available

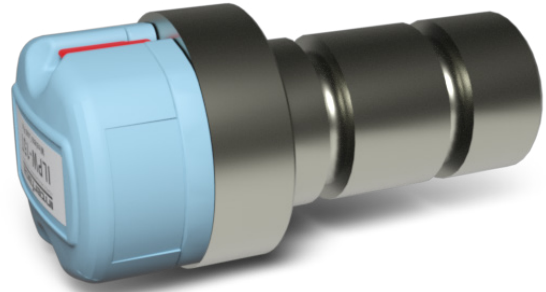
### OPTIONS

- Special ratings and sizes (see WTSLP data sheet)
- Hazardous Area certified - Intrinsically Safe (Ex i)
- Various wireless accessories available. See WTS range of wireless products.

### TYPICAL APPLICATIONS

- Crane Overload Protection
- Winch Force Monitoring
- Cable and Wire Dynamometers
- Hoist Overload Protection
- Mooring Tension Measurement

### STANDARD CONFIGURATION

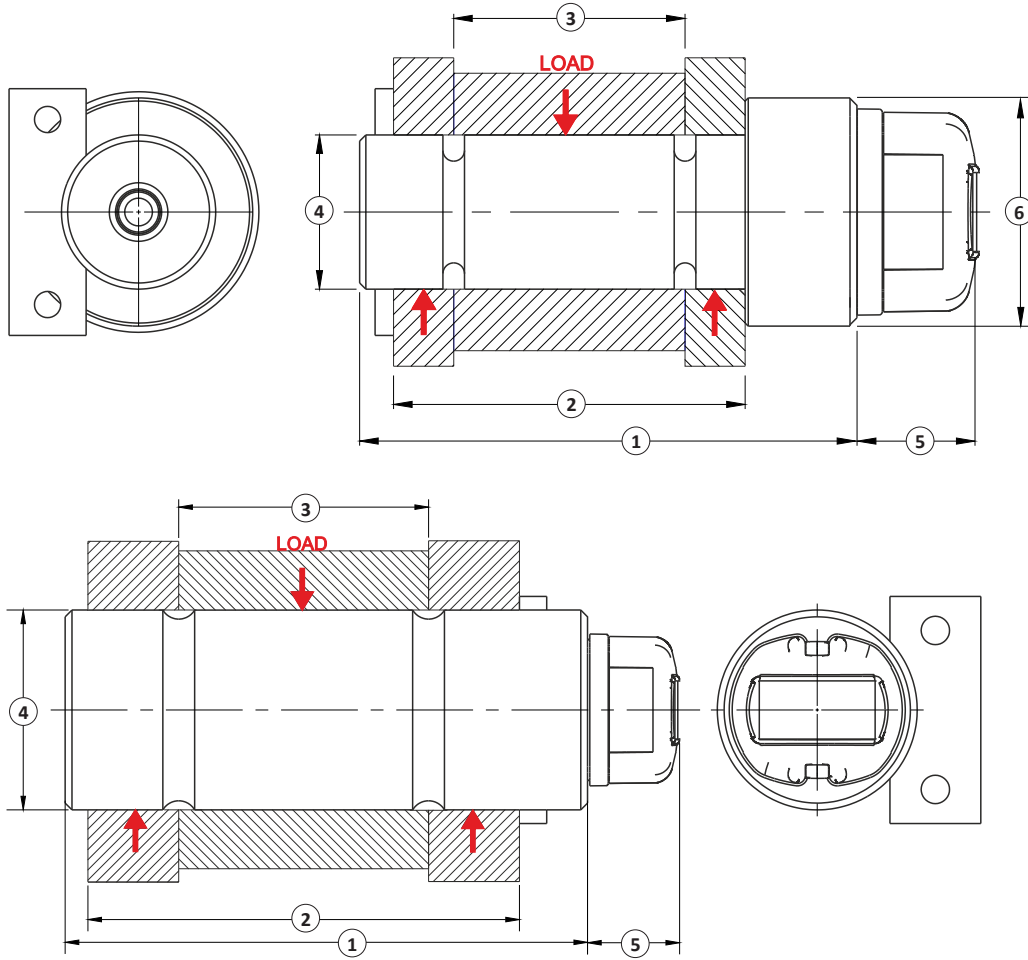


Model ILPW-15MT (Shown)

### SPECIFICATIONS

ACCURACY – (MAX ERROR)	
Nonlinearity – %FS	±1.0 (typically) depending on pin geometry
Nonrepeatability – %FS	±0.1
TEMPERATURE	
Operating Range	°F -4 to 131
	°C -20 to 55
Zero Temperature Coefficient – % of Rated Load / °C	±0.01
Span Temperature Coefficient – % of Rated Load / °C	±0.01
ELECTRICAL	
Radio Type / Frequency – GHz	2.4; FCC conforming
Sample Rate – samples/sec	Up to 200
Available Channels	16
MECHANICAL	
Standard Calibration	Compression
Safe Overload – %Capacity	150
Ultimate Overload – %Capacity	300
Battery	AAA Alkaline x 2 (supplied with 1.2Ah batteries)
Battery Life – hrs	300 typically
Transmission Range – ft (m)	Up to 1,968.5 (600) (clear line of sight)
Environmental Rating	IP67
Telemetry Housing	Polyamide resin
Material	High Tensile Stainless Steel

## ILPW STANDARD WIRELESS LOAD MEASURING PIN (U.S. & METRIC)



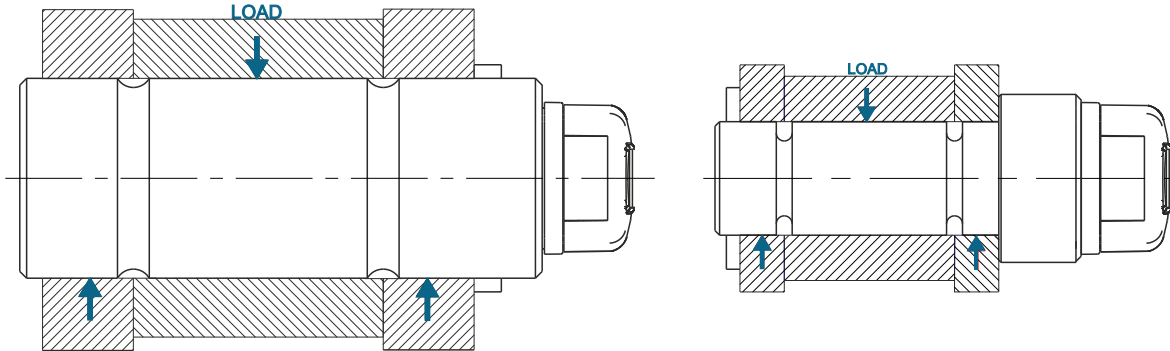
### DIMENSIONS

Capacity		(1)		(2)		(3)		(4)		(5)		(6)		Weight	
Metric (MT)	U.S. (lbf)	Metric (mm)	U.S. (in)	Metric (mm)	U.S. (in)	Metric (mm)	U.S. (in)	Metric (mm)	U.S. (in)	Metric (mm)	U.S. (in)	Metric (mm)	U.S. (in)	Metric (kgs)	U.S. (lbs)
3.5	7.7K	129	5.08	75	2.95	50	1.97	Ø30	Ø1.18	41	1.61	Ø78	Ø3.07	1.4	3.09
6.5	14.3K	149	5.87	95	3.74	63	2.48	Ø40	Ø1.57	41	1.61	Ø78	Ø3.07	2	4.41
15	33K	174	6.85	114	4.49	75	2.95	Ø50	Ø1.97	41	1.61	Ø78	Ø3.07	3.1	6.83
25	55K	219	8.62	152	5.98	89	3.50	Ø63	Ø2.48	41	1.61	Ø78	Ø3.07	5.6	12.35
50	110K	249	9.80	178	7.00	102	4.02	Ø75	Ø2.95	41	1.61	Ø78	Ø3.07	8.6	18.96
100	220K	230	9.10	190	7.48	110	4.33	Ø88	Ø3.46	41	1.61	Ø78	Ø3.07	11.8	26.01
200	440K	300	11.81	220	8.66	130	5.12	Ø125	Ø4.92	41	1.61	Ø78	Ø3.07	29.8	65.70
250	551K	300	11.81	220	8.66	130	5.12	Ø125	Ø4.92	41	1.61	Ø78	Ø3.07	29.8	65.70
500	1,102K	440	17.32	370	14.57	225	8.86	Ø170	Ø6.69	41	1.61	Ø78	Ø3.07	79.2	174.61
750	1,653K	590	23.23	500	19.69	295	11.61	Ø200	Ø7.87	41	1.61	Ø78	Ø3.07	146	321.88
1000	2,204K	712	28.03	612	24.09	360	14.17	Ø250	Ø9.84	41	1.61	Ø78	Ø3.07	275	606.27
1500	3,307K	832	32.76	731	28.78	430	16.93	Ø275	Ø10.83	41	1.61	Ø78	Ø3.07	389	857.60

U.S. dimensions and capacities are provided for conversion only. Standard products have International System of Units (SI) capacities and dimensions.

## ILPW STANDARD WIRELESS LOAD MEASURING PIN (U.S. & METRIC)

### MOUNTING CONFIGURATION



Various mounting configurations are available.

**Shown:** Typical mounting with anti-rotational slot near the end; connector output at housing base.