

**LOAD CELL CHARACTERISTICS**

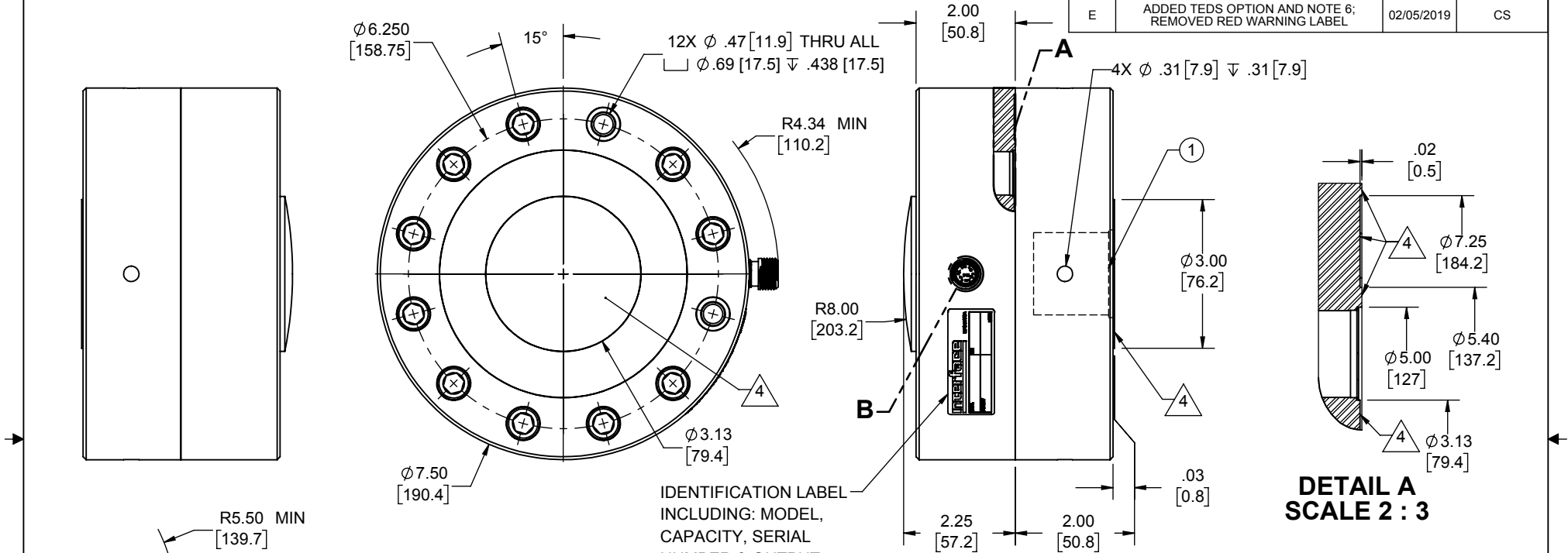
#	CAPACITY	US CAPACITIES 100K (lbf)	SI CAPACITIES 450, 500 (kN)
1	BASE THREAD & C'BORE	1.750-12 UNF-3B $\nabla$ 1.75 $\square$ $\phi$ 1.77 $\nabla$ .12	M27 X 2-6H $\nabla$ 1.75[44.5] $\square$ $\phi$ 1.77[45.0] $\nabla$ .12[3]

Interface Inc. claims proprietary rights in the information disclosed herein. This drawing is furnished in confidence on the express understanding that neither it nor any reproduction thereof will be disclosed to others or used for the purpose of manufacture or procurement of the article or part shown hereon without written permission of Interface Inc. The drawing shall remain the property of Interface Inc. and shall be returned upon request by Interface Inc.

**80009**

**REVISIONS**

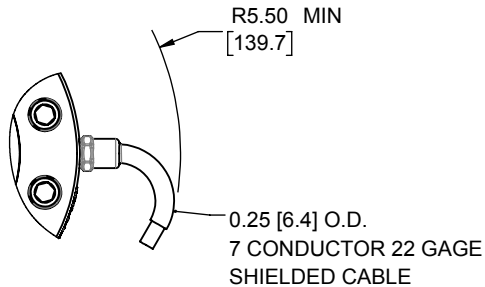
REV.	DESCRIPTION	DATE	APPROVED
B	BASE SI THREAD WAS M42 X 2-4H X 44.5	7/06/11	
C	UPDATED TO CURRENT STANDARDS	9/07/2017	CS
D	SHCS WERE HHCS, ADDED NOTE 5 & 500 KN CAPACITY	07/25/2018	SKD
E	ADDED TEDS OPTION AND NOTE 6; REMOVED RED WARNING LABEL	02/05/2019	CS



IDENTIFICATION LABEL  
INCLUDING: MODEL,  
CAPACITY, SERIAL  
NUMBER & OUTPUT

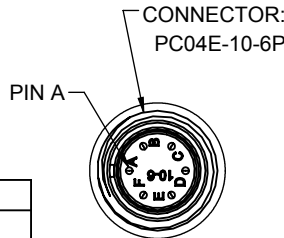
**DETAIL A  
SCALE 2 : 3**

**DETAIL B  
SCALE 1 : 1**



CONNECTOR PINOUT		
PIN	W/O TEDS FUNCTION	WITH TEDS FUNCTION
A	+ EXCITATION	+ EXCITATION
B	+ SIGNAL	+ SIGNAL
C	- SIGNAL	- SIGNAL
D	- EXCITATION	- EXCITATION
E	N/C	ID DATA
F	N/C	ID GROUND
TENSION UPSCALE		

INTEGRAL CABLE MODELS	
COLOR	FUNCTION
RED	+ EXCITATION
GREEN	+ SIGNAL
WHITE	- SIGNAL
BLACK	- EXCITATION
WHITE / RED	+ SENSE
WHITE / BLACK	- SENSE
WHITE / YELLOW	SHUNT CAL
SHIELD	NO CONNECTION



- MODELS WITH TEDS CHIP HAVE A "T" AT THE END OF THE MODEL NUMBER (1231HL-100K-TB). TEDS LABEL INSTALLED
- PAINT INTERFACE BLUE.
- NO PAINT
- CONNECTOR / CABLE POSITIONS FOR MULTIPLE BRIDGES ARE AT 90° CCW INCREMENTS.
- STANDARD CABLE LENGTH IS 10 FT ( 3M )  
NON-STANDARD CABLE LENGTH PER OPTION CODE.
- BASE IS OPTIONAL. MODEL NUMBERS ENDING IN (-B) HAVE A BASE INSTALLED.

UNLESS OTHERWISE SPECIFIED  
DIMENSIONS ARE IN INCHES [mm]  
TOLERANCES ARE:  
ANGLES  $\pm 0^{\circ} 30'$   
.XX  $\pm .01$  [0.25]  
.XXX  $\pm .005$  [0.13]

**Interface** 7418 E. HELM DRIVE  
**FORCE MEASUREMENT SOLUTIONS**, SCOTTSDALE, AZ 85260 USA

TITLE:  
**OUTLINE MODEL: 1231**

APPROX WEIGHT (lbs)	
WITH BASE	43.7
WITH OUT BASE	19.2

CREATOR	DATE
DESIGNED:	
DETAILED:	7/28/2006
WEIGHT: (APPROX)	43.7 (lbs)

SIZE:	DWG. NO:	REV:
A	80009	E
SCALE: 1:4	SHEET 1 OF 1	