

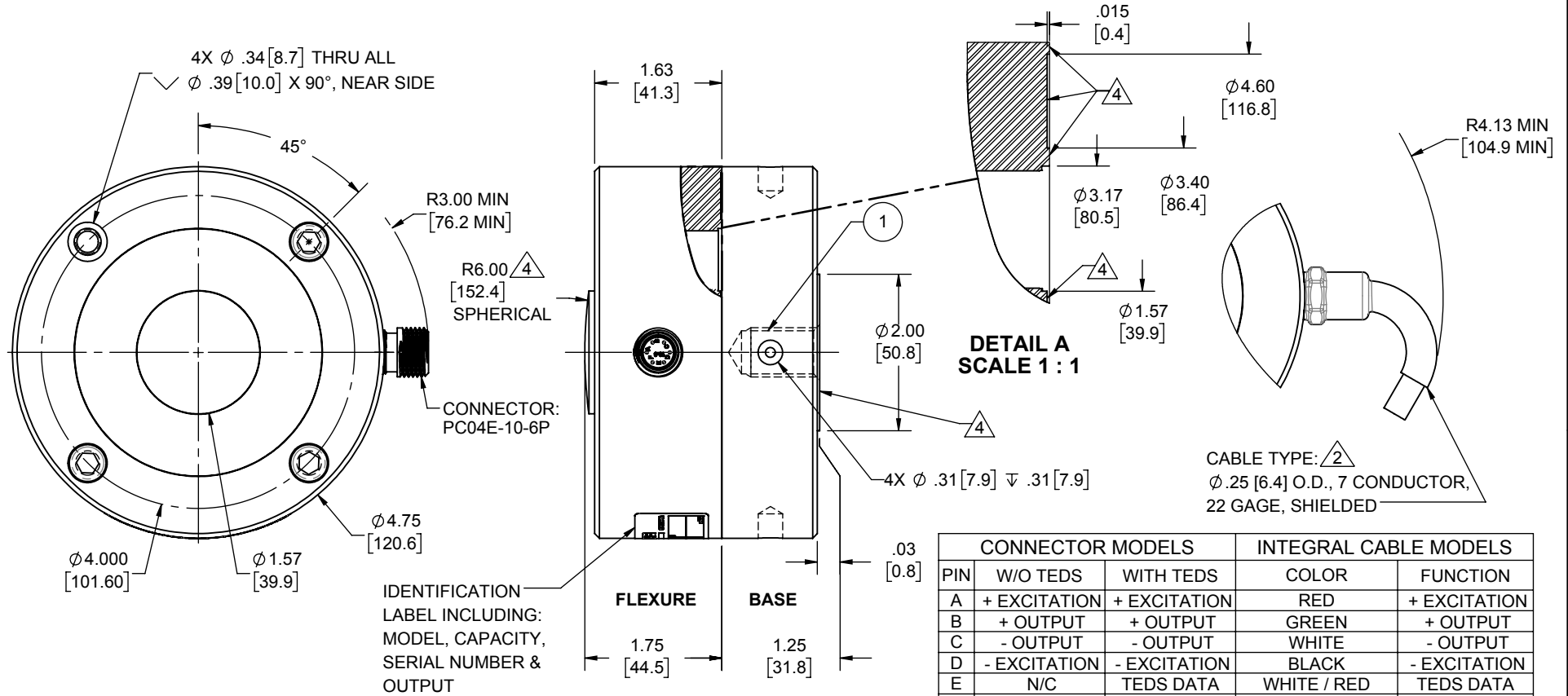
LOAD CELL CHARACTERISTICS

| # | CAPACITY | US CAPACITIES | SI CAPACITIES |
|---|---------------------|----------------------------|-------------------------------|
| | | 25K & 50K (lbf) | 125, 200 & 250 (kN) |
| 1 | BASE THREAD & DEPTH | 1/2-20 UNF-2B ∇ .88 | M16 X 2-6H ∇ .88[22.4] |

Interface Inc. claims proprietary rights in the information disclosed herein. This drawing is furnished in confidence on the express understanding that neither it nor any reproduction thereof will be disclosed to others or used for the purpose of manufacture or procurement of the article or part shown herein without written permission of Interface Inc. The drawing shall remain the property of Interface Inc. and shall be returned upon request by Interface Inc.

82210

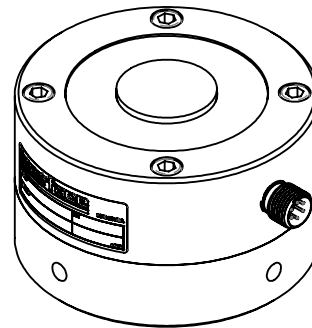
| REVISIONS | | | |
|-----------|-----------------|------------|----------|
| REV. | DESCRIPTION | DATE | APPROVED |
| A | INITIAL RELEASE | 06/14/2018 | CS |



| PIN | CONNECTOR MODELS | | INTEGRAL CABLE MODELS | |
|---------------------|------------------|--------------|-----------------------|--------------|
| | W/O TEDS | WITH TEDS | COLOR | FUNCTION |
| A | + EXCITATION | + EXCITATION | RED | + EXCITATION |
| B | + OUTPUT | + OUTPUT | GREEN | + OUTPUT |
| C | - OUTPUT | - OUTPUT | WHITE | - OUTPUT |
| D | - EXCITATION | - EXCITATION | BLACK | - EXCITATION |
| E | N/C | TEDS DATA | WHITE / RED | TEDS DATA |
| F | N/C | TEDA GND | WHITE / BLACK | TEDA GND |
| STANDARD CONNECTION | | | WHITE / YELLOW | SHUNT CAL |
| | | | SHIELD | N/C |

ALL READ UPSCALE IN TENSION

- 5. MODELS WITH TEDS ID CHIP HAVE A "T" AT THE END OF THE MODEL NUMBER (1221HL-125KN-T).
- 4. NO PAINT
- 3. CONNECTOR / CABLE POSITION ON DUAL BRIDGE LOAD CELLS ARE ORIENTATED 180° APART.
- 2. STANDARD CABLE LENGTH IS 10 FT [3 M]. NON-STANDARD CABLE LENGTH PER OPTION CODE.
- 1. BASE IS OPTIONAL. MODEL NUMBERS ENDING IN (B) HAVE A BASE INSTALLED.



SCALE: 1:3

UNLESS OTHERWISE SPECIFIED
DIMENSIONS ARE IN INCHES [mm]
TOLERANCES ARE:
ANGLES ± 0° 30'
.XX ± .01 [0.25]
.XXX ± .005 [0.13]

| | |
|--------------------------------|-----------|
| CREATOR | DATE |
| DESIGNED: CS | 11/03/17 |
| DETAILED: DAVID C. | 11/3/2017 |
| WEIGHT: (APPROX) 12.3 (lbs) | |

Interface
FORCE MEASUREMENT SOLUTIONS

7418 E. HELM DRIVE
SCOTTSDALE, AZ 85260 USA

TITLE:
**OUTLINE MODEL:
1221**

SIZE: A DWG. NO: **82210** REV: **A**

SCALE: 1:2 SHEET 1 OF 1