

Mesure d'effort sur robot de soudure

SDI 17

90061

WELD PROBE FORCE GAGE

Model 90061 is a self contained, portable measurement system which allows auditing of the pinch force generated between the electrodes of resistance spot welders. Resistance welding uses a pair of electrodes to clamp two base metals firmly together prior to and during application of electrical current. Poorly clamped parts result in a defective joint. A correctly clamped assembly aids in reducing the resistance in the joint and allows the current flow to properly heat the base metals to weld the part.



SPECIFICATIONS

Capacity (lbs) .....	300, 1K, 3K, 5K, 10K
Overload capacity .....	150% of F.S.
Display .....	4 digits standard
Accuracy .....	0.5% of F.S.
Weight.....	4.0 lbs
Battery life.....	50 hours continuous use
Battery type.....	AA size alkaline
Analog output.....	0 to 1 V dc

FEATURES

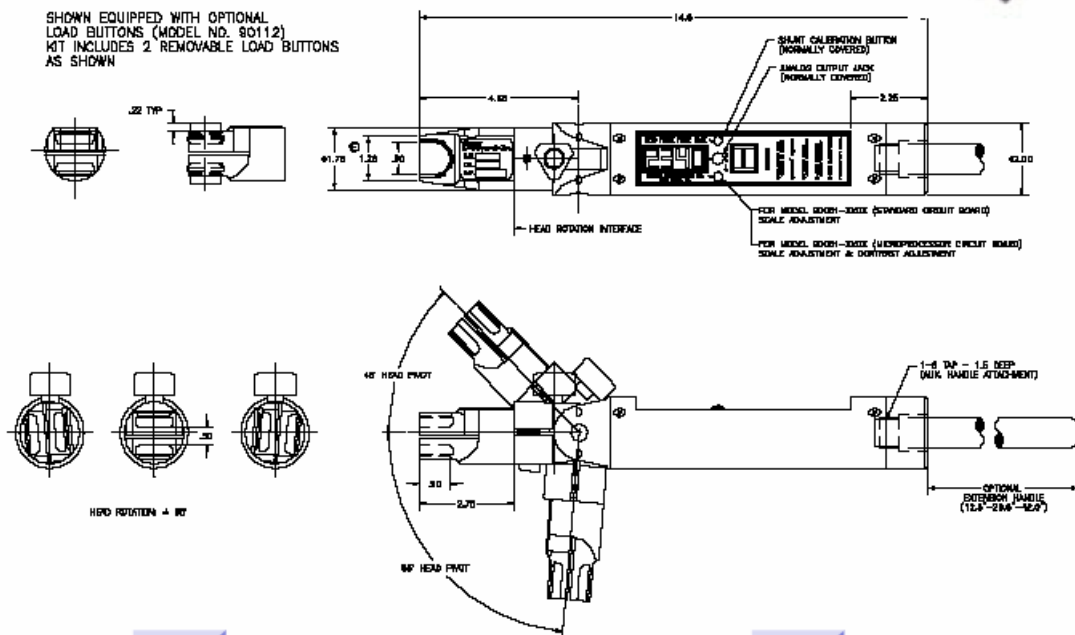
- Rotating and pivoting beryllium copper sensor head for optimum assessibility
- Single button operation
- Optional two-piece construction

CUSTOM DESIGNS:

- Projection tip sensing element.



DWG



DWG 1kbs/3kbs Version

DWG 5kbs/10kbs Version

