

Model LBM Compression Load Button

Why the Interface model LBM Compression Load Button is the best in class:

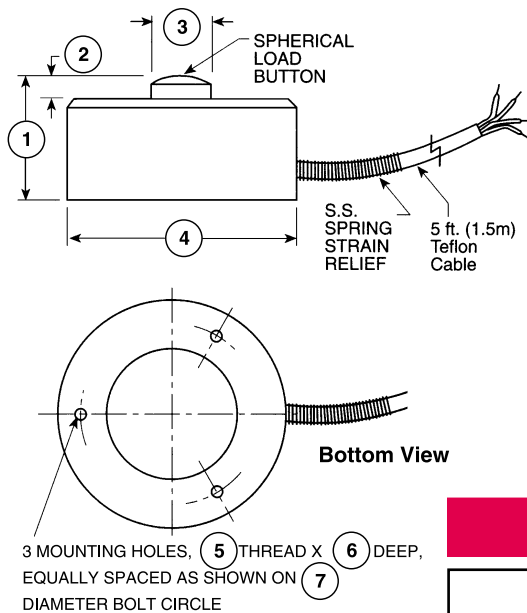
- Temperature compensated
- Integral load button
- Small diameter
- Environmentally sealed



ACCESSORIES

Instrumentation

Consult factory for more technical information



SPECIFICATIONS

ACCURACY – (MAX ERROR)

Nonlinearity–% FS±0.25
 Hysteresis–% FS±0.25
 Nonrepeatability–% RO±0.10

TEMPERATURE

Compensated Range–°F60 to 160
 Compensated Range–°C16 to 71
 Operating Range–°F–65 to 250
 Operating Range–°C–54 to 121
 Effect on Zero–% RO/°F – MAX±0.005
 Effect on Output–%/°F – MAX±0.01
 Zero Balance % FS±2

ELECTRICAL

Rated Output–mV/V (Nominal)2.0
 Bridge Resistance–Ohm (Nominal)350
 Excitation Voltage10 VDC

MECHANICAL

CalibrationComp.
 Deflection0.004
 Safe Overload–% CAP150
 Ultimate Overload % of CAP300
 Cable length–ft5
 4-conductor Teflon insulated cable

DIMENSIONS

See Drawing	CAPACITY (lbf)									
	LBM Series									
	25, 50, 100		250,500,1K,2K		5K, 10K		20K		50K	
	inch	mm	inch	mm	inch	mm	inch	mm	inch	mm
①	0.62	15.7	0.39	9.90	0.63	16.0	1.0	25.4	1.50	38.1
②	0.05	1.30	0.07	1.80	0.08	2.00	0.12	3.00	0.18	4.60
③	0.21	5.30	0.32	8.10	0.43	10.9	0.60	15.0	0.78	19.8
④	1.00	25.4	1.25	31.8	1.50	38.1	2.00	50.8	3.00	76.2
⑤	4-40 UNC		6-32 UNC		6-32 UNC		6-32 UNC		6-32 UNC	
⑥	0.19	4.83	0.25	6.35	0.25	6.35	0.25	6.35	0.25	6.35
⑦	0.75	19.00	1.00	25.4	1.25	31.8	1.63	41.3	2.38	60.3