

01184 Series

DIGITAL FM TELEMETRY STEERING EFFORT SENSORS

Digital FM telemetry offers continuous, non-contact torque data from the very low mass, rotating steering sensor to a stationary receiver. This system provides a portable, state-of-the-art steering effort sensor. It can be used in the field, laboratory, or on the test track to measure steering torque and angle requirements.

SPECIFICATIONS

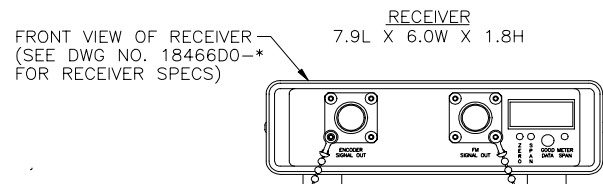
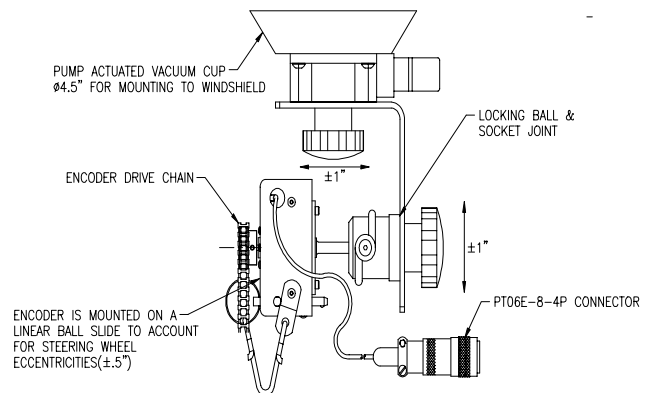
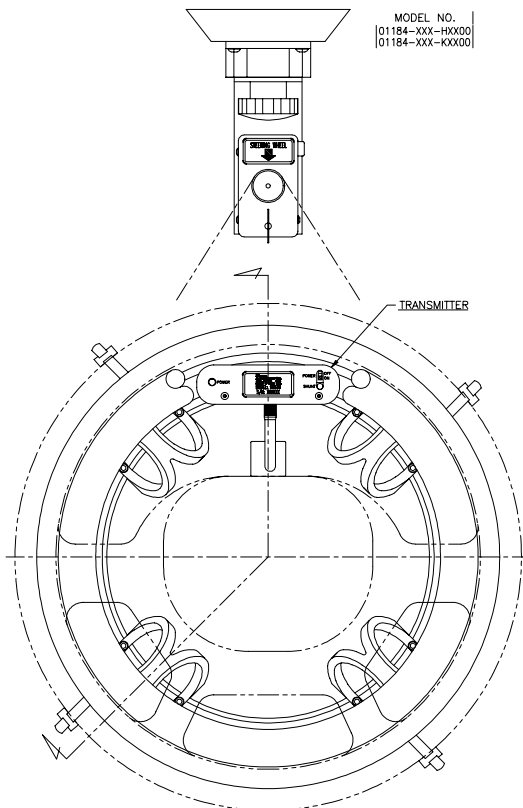
Capacity (in. lbs.) F.S.	200, 500, & 1,000
Output nom., F.S.	+/- 5 volts DC
Signal Coupling	FM Transmitter/Receiver
Encoder (optical)	7,200 PPR w/Quadrature
High (H) Resolution (degrees)05
Max Range (degrees)	+/- 409
Output at max range (volts)	+/- 5
Low (L) Resolution (degrees)	0.2
Max Range (degrees)	+/- 1638
Output at max range (volts)	+/- 5
Rate (degrees/sec)	2.8
Range (degrees/sec)	+/- 1000
Output at max range (volts)	+/- 5
Mass Moment of Inertia (in lb sec ²)20



VIDEO

FEATURES

- Low system mass
- Airbag compatibility
- No drag from bearings or slip rings
- Quick and easy installation
- Digital telemetry to eliminate signal interference



DWG