



# Model 5350 & 5355 Solid Flange Reaction Torque Cell

Why the Interface model 5350 & 5355 Reaction Torque Cell is the best in class:

- High Torsional Stiffness
- Extraneous Load Resistance
- Compact Size
- Optional  $\pm 10$  VDC output available on 100 oz-in and above



## DIMENSIONS

See Drawing	SOLID FLANGE TYPE					
	5350	5355				
	CAPACITY (oz-in) 10,20,50,100,200	CAPACITY (lb-in)				
	10,20,50	100,200,500	1K,2K,5K	10K,20K	50K,100K	
①	1.50 inch	2.00 inch	2.75 inch	4.50 inch	6.00 inch	8.00 inch
②	1.00 inch	1.375 inch	2.000 inch	3.875 inch	5.375 inch	7.375 inch
③	0.875 inch	1.250 inch	1.875 inch	3.750 inch	5.25 inch	7.250 inch
④	1.50 inch	2.125 inch	2.75 inch	3.50 inch	4.50 inch	5.50 inch
⑤	1.375 inch	1.875 inch	2.375 inch	3.00 inch	3.75 inch	4.75 inch
⑥	.0625 inch	0.125 inch	0.188 inch	0.25 inch	0.375 inch	0.375 inch
⑦	0.563 inch	0.750 inch	1.250 inch	2.750 inch	4.000 inch	5.750 inch
⑧	#4-40 UNC-2B 2 places	#10-32 UNF-2B 2 places	1/4-20 UNC-2B 4 places	3/8-24 UNF-2B 4 places	7/16-20 UNF-2B 8 places	5/8-18 UNF-2B
⑨	0°	0°	0°	0°	22.5°	15°
⑩	Conxall 7282-GPG-300	CF3102E-14S-6P	CF3102E-14S-6P	CF3102E-14S-6P	CF3102E-14S-6P	CF3102E-14S-6P

## SPECIFICATIONS

### ACCURACY – (MAX ERROR)

Nonlinearity-% FS ..... $\pm 0.1$   
 Hysteresis-% FS ..... $\pm 0.1$   
 Nonrepeatability-% ..... $\pm 0.05$

### TEMPERATURE

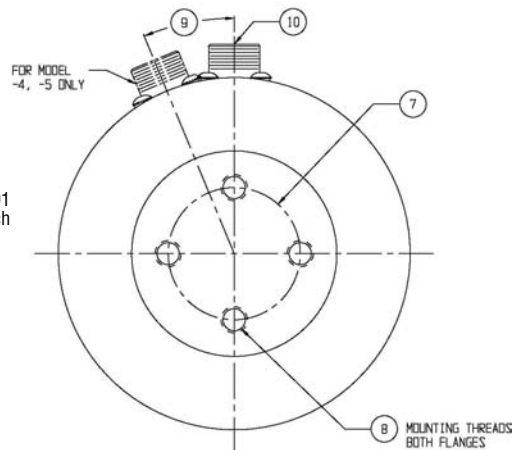
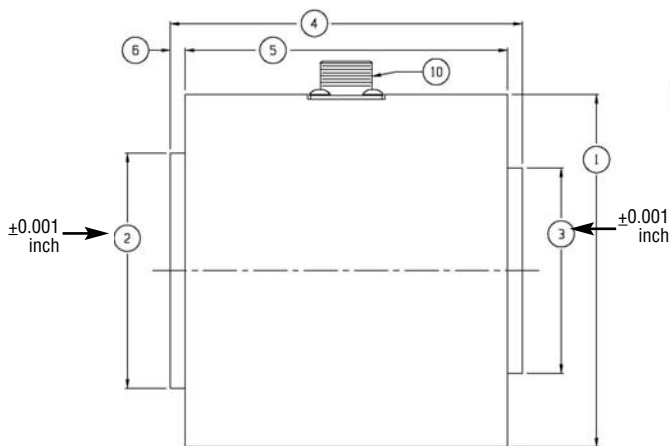
Compensated Range-°F ..... $\pm 75$  to  $\pm 175$   
 Compensated Range-°C ..... $+24$  to  $+80$   
 Operating Range-°F ..... $-65$  to  $+225$   
 Operating Range-°C ..... $-54$  to  $+107$   
 Effect on Output-%/°F-MAX ..... $\pm 0.002$   
 Effect on Zero-% RO/°F-MAX ..... $\pm 0.002$

### ELECTRICAL

Rated Output-mV/V (Nominal) .....2.0  
 (5350-10 .....1.3)  
 Bridge Resistance-Ohm (Nominal) .....350  
 Excitation Voltage-MAX .....10 VDC

### MECHANICAL

Calibration .....CW & CCW  
 Safe Overload-% CAP .....200



\*Model 5350 & 5355

\*Amplified Output Available. Please consult factory for details.