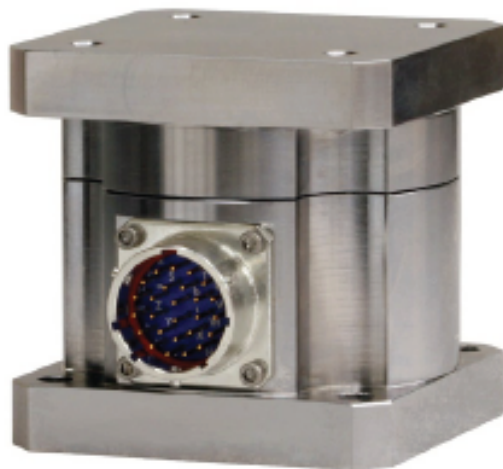


MC3 Inox version étanche

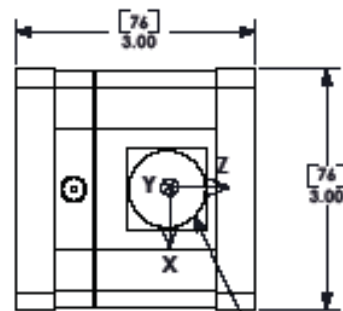


MC3-SSUDW

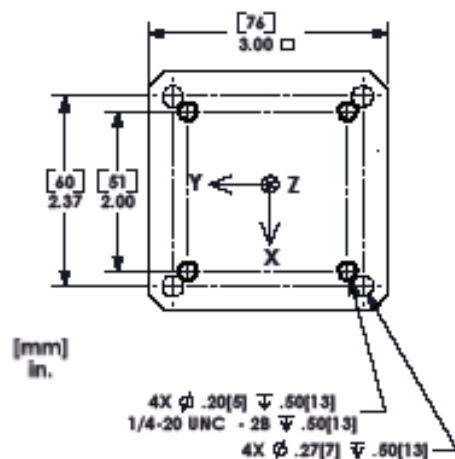
Underwater force sensor

AMTI's MC3-SSUDW is a six-component force sensor that features a stainless steel body and an oil-filled pressure compensation bladder to enable short-term (<24 hours) continuous submersion in fresh water.

Specifications	100	250	500	1000
Fz Capacity, lb (N)	100 (400)	250 (1100)	500 (2200)	1000 (4400)
Fx, Fy Capacity, lb (N)	50 (220)	125 (560)	250 (1100)	500 (2200)
Mz Capacity, in-lb (Nm)	50 (5.6)	125 (14)	250 (28)	500 (56)
Mx, My Capacity, in-lb (Nm)	100 (11)	250 (28)	500 (56)	1000 (110)
Fz Stiffness, x10 ⁵ lb/in (x10 ⁷ N/m)	1.7 (2.8)	4.5 (7.5)	9.0 (15.0)	18.0 (30.0)
Fx, Fy Stiffness, x10 ⁵ lb/in (x10 ⁷ N/m)	0.12 (0.2)	0.3 (0.5)	0.6 (1.0)	1.2 (2.0)
Mz Stiffness, x10 ⁴ in*lb/radian (x10 ⁴ Nm/radian)	2.0 (0.2)	5.0 (0.5)	10 (1.1)	20 (2.2)
Fz Sensitivity	6.0 (1.35)	3.0 (0.67)	1.5 (0.34)	0.75 (0.17)
Fx, Fy Sensitivity (µv/v-lb)	24.0 (5.4)	12.0 (2.7)	6.0 (1.35)	3.0 (0.67)
Mz Sensitivity (µv/v-lb)	24.0 (121.4)	12.0 (106.2)	6.0 (53.1)	3.0 (26.5)
Mx, My Sensitivity (µv/v-lb)	30.0 (265.5)	15.5 (137.2)	8.0 (70.8)	4.0 (35.4)
Weight, lb (kg)	3.7 (1.7)			
Body Material	17-4 stainless steel H900			
Temperature Range	0 to 125 F (-18 to 52 C)			
Sensing Elements	Strain gage bridge			
Connector Type	Detorotics DT02H-16-26PN-105			
Amplifier	Required			
Analog Outputs	Six channels			
Digital Outputs	None			



CONNECTOR



[mm]
in.

AMTI
FORCE AND MOTION

www.AMTI.biz 617-926-6700