



Model 5350 & 5355 Solid Flange Reaction Torque Cell

Why the Interface model 5350 & 5355 Reaction Torque Cell is the best in class:

- High Torsional Stiffness
- Extraneous Load Resistance
- Compact Size
- Optional ± 10 VDC output available on 100 oz-in and above



DIMENSIONS

See Drawing	SOLID FLANGE TYPE					
	5350		5355			
	CAPACITY (oz-in) 10,20,50,100,200	10,20,50	100,200,500	1K,2K,5K	10K,20K	50K,100K
①	1.50 inch	2.00 inch	2.75 inch	4.50 inch	6.00 inch	8.00 inch
②	1.00 inch	1.375 inch	2.000 inch	3.875 inch	5.375 inch	7.375 inch
③	0.875 inch	1.250 inch	1.875 inch	3.750 inch	5.25 inch	7.250 inch
④	1.50 inch	2.125 inch	2.75 inch	3.50 inch	4.50 inch	5.50 inch
⑤	1.375 inch	1.875 inch	2.375 inch	3.00 inch	3.75 inch	4.75 inch
⑥	.0625 inch	0.125 inch	0.188 inch	0.25 inch	0.375 inch	0.375 inch
⑦	0.563 inch	0.750 inch	1.250 inch	2.750 inch	4.000 inch	5.750 inch
⑧	#4-40 UNC-2B 2 places	#10-32 UNF-2B 2 places	1/4-20 UNC-2B 4 places	3/8-24 UNF-2B 4 places	7/16-20 UNF-2B 8 places	5/8-18 UNF-2B
⑨	0°	0°	0°	0°	22.5°	15°
⑩	Conxall 7282-GPG-300	CF3102E-14S-6P	CF3102E-14S-6P	CF3102E-14S-6P	CF3102E-14S-6P	CF3102E-14S-6P

SPECIFICATIONS

ACCURACY – (MAX ERROR)

Nonlinearity—% FS ± 0.1
 Hysteresis—% FS ± 0.1
 Nonrepeatability—% ± 0.05

TEMPERATURE

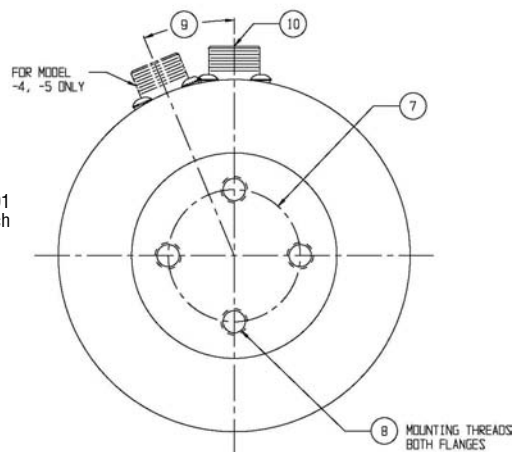
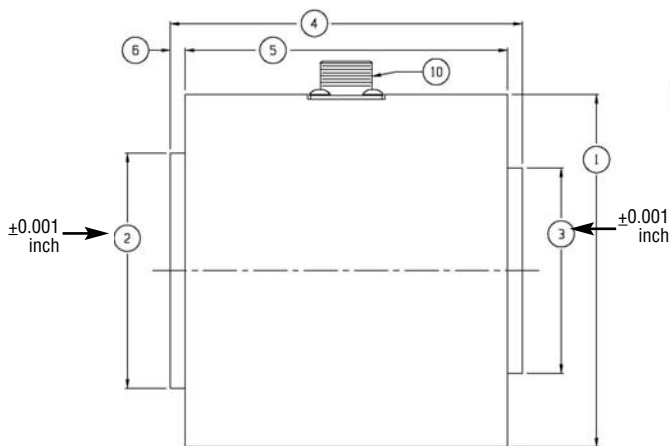
Compensated Range—°F ± 75 to ± 175
 Compensated Range—°C $+24$ to $+80$
 Operating Range—°F -65 to $+225$
 Operating Range—°C -54 to $+107$
 Effect on Output—%/°F-MAX ± 0.002
 Effect on Zero—% RO/°F-MAX ± 0.002

ELECTRICAL

Rated Output—mV/V (Nominal)2.0
 (5350-101.3)
 Bridge Resistance—Ohm (Nominal)350
 Excitation Voltage—MAX10 VDC

MECHANICAL

CalibrationCW & CCW
 Safe Overload—% CAP200



*Model 5350 & 5355

*Amplified Output Available. Please consult factory for details.

